

## WILL USE FIELD AT TURF BOG FOR SUMMER

Noll Raps School Board And  
Other Town Officials On  
Recreational Program

Hope for using Clearman Field for part of the Recreation Department's summer program was abandoned this week and plans got under way to open up the Turf Bog to the department. Commissioner Noll, stating his "patience was at an end," gave instructions Monday to Recreation Director Lister to plan to fill some of the many demands put on his department by placing them on the new field.

Noll and Mayor Williams sent a request two weeks ago to the Board of Education to sit down in conference to reconsider the board's action in closing Clearman for plowing, grading and reseeding. When no reply was forthcoming and other attempts to arbitrate the problem failed, Noll decided Clearman was out. Lister has placed the Church Softball League at the Bog four nights a week beginning May 20. The Belleville Softball championships will be held there Saturdays and Sundays beginning July 20 and will continue through Labor Day.

"We have been very patient," Noll said at a testimonial reception Monday night to members of the Italian Baptist church which finished second in the Church Basketball League. "Apparently the Board of Education finds it easy to plow the field under but has no time to sit down and discuss the welfare of the children of the town."

Raps Town Officials  
Town officials also came in for share in the criticism. "It seems strange," said Noll, "that they find funds to all these other improvements they have in town—fine police and fire protection for homes and for lives, both of which are very necessary—but the future of the youth of today, who will become the citizens of tomorrow and whose minds and hearts should be developed through recreation, is not given any consideration."

## DISCOVER RABID DOG IN TOWN

Animal Died On Monday; Bit  
Two People And Also  
Two Dogs

Several members of the family of James Baldwin of 120 Stephen street were snapped at by their dog which became ill last week and died Monday night. Examination of the dog's head by the Health Department definitely established the fact that the dog was rabid. Health Officer Eugene Berry said. Although the dog was grabbed at Mr. Baldwin, his sons John and Eugene, and his daughter Dorothy, the animal's teeth did not break the skin of any of them. He did, however, bite Robert Adelhelm of 117 Stephen street, a neighbor, and snapped at Mrs. Anna Adelhelm, his mother. All of these people are receiving the Pasteur treatment. Two neighborhood dogs which were bitten by the Baldwin dog are being destroyed.

Berry, in reporting this case makes an earnest plea to all dog owners not to hesitate in calling a veterinarian or the Health Department when they have a sick dog. This should be done at once as contact with the saliva of a dog which may be rabid is dangerous and unavoidable in trying to care for a sick dog. Mr. Berry also wants to make it very clear that all dogs not on a leash or muzzled will be picked up by the department.

## Warning To Dog Owners

Due to the re-appearance of rabies, warning is hereby given that, effective immediately, dogs running at large on the streets of Belleville without muzzles will be picked up and destroyed, and their owners will be subject to the full penalties of the law.

EUGENE T. BERRY  
Health Officer

JOSEPH KING  
Director Public Affairs

## Cherry Blossoms Big Drawing Card



Thousands have been attracted to the Branch Brook Park Extension during the past week to view the Japanese cherry blossoms which are now in bloom. The attractive young lady giving the blooms the once over is Miss Ruth Lang of 98 Union avenue.

## Cherry Blossoms In Park Attract Thousands Here

Police Estimate 25,000 Cars Passed Through Branch  
Brook Park Extension on Sunday; Double  
Blossoms Are Coming Out In Day Or So.

Police officials estimate that more than 25,000 automobiles jammed into Mill street and Union avenue Sunday to view the blossoms of the Japanese cherry trees in the Branch Brook Park Extension along the banks of the Second River. The trees broke forth into full bloom late last week and visitors came from all over the state, from New York, Pennsylvania and other eastern states to see the "only rival to Washington's Tidal Basin."

There are more than 1,800 trees planted in the north end of Branch Brook Park, most of which are in the Belleville section. They were presented twelve years ago by Mrs. Felix Fuld, sister of Louis Bamberger. Since then they have been bred and cultivated by the horticultural department of the Essex County Park Commission.

The first year 180 trees were set out around the clay tennis courts in the park. In 1933 the planting started in earnest and the display was extended into Belleville shortly after. The trees which have been planted in the newest section of the park, between Union and Washington avenues along the Second River, are still too young to bear many blossoms, according to Park Commission Horticulture Director Carl P. Witte, but he expects that they will be at full glory in another two years.

Last Another Week  
Witte said that the blossoms will last another week or two, provided there is no heavy rain or wind. The blossoms which thrived visitors last weekend are of the single-blossom variety. The "double" are expected to arrive today or tomorrow.

Police said that Sunday's traffic through the park was one of the heaviest in the history of Belleville. It is estimated that more than 100,000 persons viewed the spectacle. The crowd taxed the traffic divisions of both the Belleville and the Park Commission police departments.

May Have Festival  
Mayor Williams this week began a series of conferences with county park officials which is expected to result in the formation of Cherry Blossom Festival committee with the idea of making the blossoming cause for an annual celebration. Topics which have to be ironed out are principally parking and policing of the entire area.

## CHORAL PLEASURES IN CONCERT

Soloists Also Well Received By Capacity Audience  
At Wesley Church

The tenth concert of the Choral of the Woman's Club was held Tuesday evening at Wesley Methodist Church before a capacity audience. Reuel Lahmer, a conductor of high ideals and sincere musicianship, led the Choral in the two opening numbers, Bach's "Passion Chorale" which displayed the group's ability in a sacred singing, and the sprightly "Nymphs and Shepherds" of Purcell.

John Meade, who possesses a rich baritone voice, contributed three early Italian songs, and concluded his group with Valentine's aria from "Faust." Mr. Meade immediately captured the interest of his listeners and endeared with Manna-Zucca's "I Love Life."

A composition not heard often hereabouts, "Night" by Saint-Saens, brought Estelle Brooks, coloratura soprano, to the stage as soloist with the Choral. The flute obligato was played by George Neitzert of New York City, who replaced on short notice Ruth Freeman. Mr. Neitzert was a successful substitute, for his tones were clear and true and he accompanied well throughout the difficult coloratura passages.

The second half of the program began with a spirited Breton folk song, a Negro spiritual with solo by Gertrude Hewitt, and the beautiful Scene and Prayer from "Cavalleria Rusticana" by the Choral. Next Miss Brooks scored with two Italian arias, with the familiar "Ciribiribin" as an encore. Miss Brooks has an unusually fluent voice, understands her material, and sings with charming naivete. Three songs by Mr. Meade were amplified by three encores. Mr. Meade presented each composition with the definite style and feeling necessary, and his flair for dramaticism added greatly to the enjoyment of his singing. Concluding the program were three songs by the Choral, with coloratura parts of the "Italian Street Song" taken by Miss Brooks.

At the piano for the Choral and soloists was Miss Mary Elizabeth Compton, who is proving herself a capable accompanist with sound tone and good grasp of the various styles demanded.

G.O.P. Women Hope Hoffman  
Will Attend Today

The Belleville Women's Republican Club is hopeful that Harold G. Hoffman, candidate for the G.O.P. nomination for Governor, will put in an appearance at their meeting this afternoon in the Woman's Club in Rossmore place. They had expected his opponent for the nomination, State Senator Robert C. Hendrickson, but he is unable to make it. County Clerk Russell Gates, Clean Government stalwart, will pinch-hit for him. The club will hold a luncheon at 12:45 to be followed by a business meeting. The meeting will be open to the public at 2:30 when Gates is scheduled to speak. Hoffman, or his representative if he cannot make it, will follow. This will be the final meeting of the season.

The club will sponsor a card party on May 17 at the Woman's Club.

## SCOUT CAMPOREE TO DRAW 300

Three-Day Event At Clearman  
Field Will Open  
Tomorrow

Scouts from all over Belleville will gather at Clearman Field tomorrow at 3 for their annual Camporee. Plans are being made to house 300 Boy Scouts, Sea Scouts and Cubs in the temporary tent village. The Camporee will continue through Sunday. The general public is invited to attend.

There will be a competition among the patrols and troops with points to be awarded for inspection of personal equipment, the proper use and care of the campsite, participation in activities, use of supplies, patrol organization and leadership and various other projects. There will be a continuous program of events until late Sunday morning.

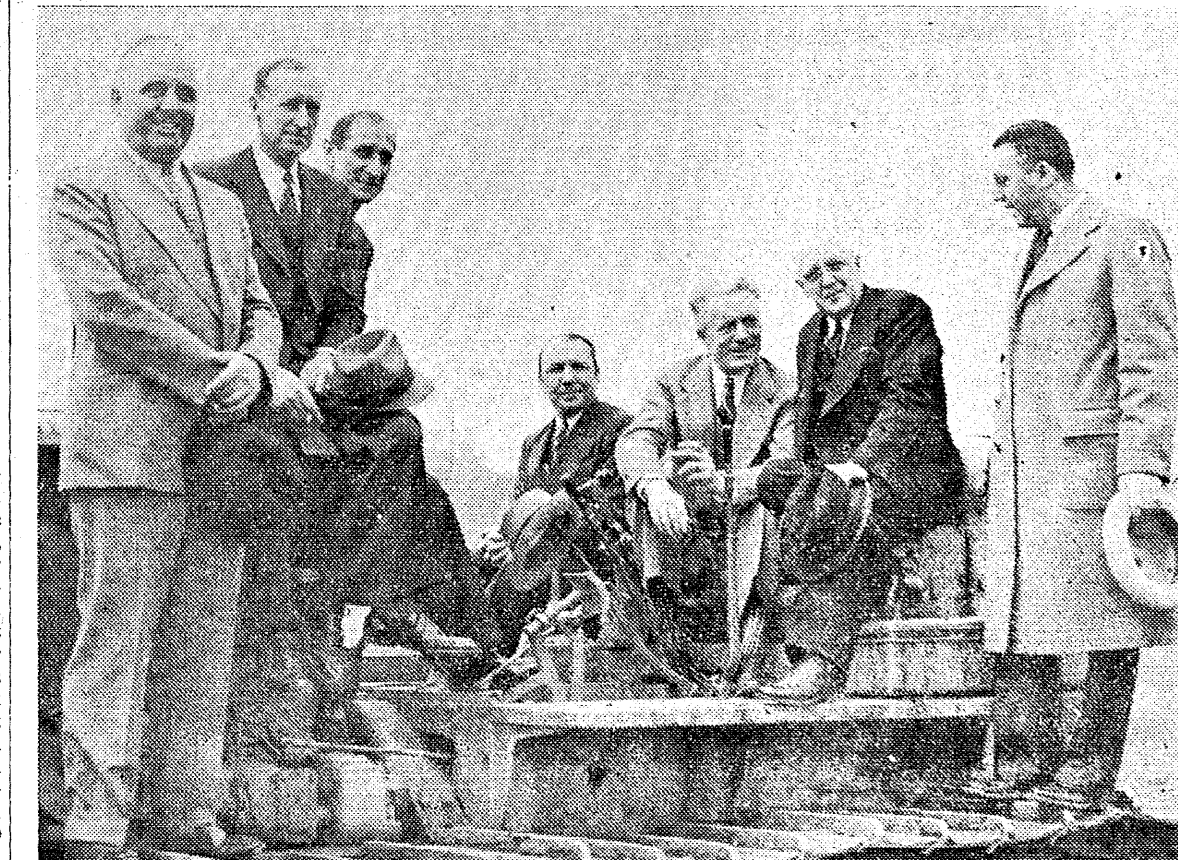
The committees in charge of the Camporee include: General Chairman, Hugh D. Kittle, W. Douglas Clark, Jr., Belleville District Commissioner; Executive Committee, George Mitchell, chairman, Carl Heck, H. D. Kittle; General Committee - Daniel Spillane, chairman, F. W. Holland, Edward Settle, Harry Brumback; Grounds Committee - Dominick Reviglio, chairman, George Dennison; Program Committee - John S. Charlton, chairman, Dominick Reviglio, John Monaghan, Frank Chambers, William Pirk, E. W. James; Camp Fire Committee - Robert Edelman, chairman, Wally Jones; Publicity Committee - Harold Ross, chairman, Thomas Delaney, Raymond Patrick, Jr., Fredrick Hauck, John S. Charlton; Religious Service Committee - Dr. O. Bell Close, chairman, Rev. Peter Deckenbach, Rev. W. H. Borchers, Rev. J. A. Ryan, Rev. Annelle E. Edwards, Rev. E. W. Collins, Rev. Joseph M. Kelly, Rev. Walter J. Lake, Rev. Benedetto Pascale, Rabbi Rubin E. Dobin, Rev. Thomas Gillick, Rev. Edgar C. Compton; Scoutmaster - Chief Alce Reid, chairman, Skipper, Al Brant, Cubmaster - Luther E. Van Pelt, chairman; Rev. Walter J. Lake, Harold Ross; Health and Safety - John Monaghan; Judges - Frank Chambers.

Bryan 5 Days Behind Schedule  
in Transcontinental Trek

(Special to The News)  
ALBIA, Ia., Wednesday — Poor weather conditions and recurrence of ankle trouble put Ray Bryan five days behind his nineteen-day schedule. He arrived here last night at 6. He had planned on being in Laramie, Wyo., by today.

Outside of the bad ankle which he sprained roller skating last winter, Bryan is in excellent physical condition. He has been averaging better than 125 miles each day but yesterday's rain slowed him down considerably.

On Hand For The Ground Breaking



Ground was broken Monday morning for the \$1,000,000 Andrew Jergens plant with local and county officials on hand, along with representatives of the concern which will construct the building. Perched atop a large caterpillar scraper are from left to right, Freeholder George Becker, Commissioner Joseph King, William Stickle, county engineer, Freeholder Anthony Meile, Mayor William H. Williams, Director of the Board of Freeholders Walter S. Gray and Commissioner Louis A. Noll.

## HENDRICKSON WILL BOW LOCALLY WEDNESDAY

Clean Government gubernatorial  
Choice At King Rally;  
Commissioner Backs Him

Senator Robert C. Hendrickson, Clean Government candidate for Governor, will be the principal speaker at the pre-election rally of the newly-formed Hendrickson-for-Governor Club Wednesday at 8. It will be held at the headquarters of the Joseph King Association at 414 Washington avenue.

Senator Homer C. Zink was named honorary chairman of the Hendrickson Club at an organizational meeting at his home Monday night. Commissioner King was elected executive chairman. The other officers who will lead the Hendrickson fight are Harry Machette, vice-chairman; Anthony J. Di Leo, secretary; and George W. Haslam, treasurer and publicity chairman.

Trustees elected include James L. Davidson, Russell K. Rose, Charles Madison, Michael D'Agostino and Harry Wortman. Walter P. Weiss, Fred Fischer, Charles Burnley and Rudolph Zoeller form the membership committee.

Statement By King  
"The main purpose of the organization," said King yesterday, "is to acquaint the people of Belleville with Senator Hendrickson, who is running on the Clean Government Republican ticket in the primary May 21."

"Senator Hendrickson stands for common honesty and decency in all his business and governmental functions. He has served this state as a senator in Trenton for a number of years. He is a legislator of proven ability and administrator of state and local government problems with wide experience. He is forty-two years of age, a World War veteran, father of four children and resides in Woodbury. He attended Temple University in Philadelphia and studied law."

"In nominating Senator Hendrickson to represent the Republican party the voters will insure themselves of a true representative of the highest type, free from all ties and a man well able to fulfill all promises that he may make."

## TO BREAK GROUND FOR B. E. CHURCH

Bethany Lutheran Structure  
Costing \$25,000 To Be  
In Joralemon Street

Ground will be broken Sunday afternoon at 3:30 for the new \$25,000 building of the Bethany Evangelical Lutheran Church. The new edifice will be erected on the northeast corner of Joralemon and New streets. Construction work will begin next week by the Adams Faber Company of Montclair.

The Rev. Mr. Willard H. Borchers, pastor of the church, will preside at the ceremonies. The officiating clergyman will be the Rev. Mr. John Wagner of Hudson Heights, president of the New Jersey Conference. The Rev. Dr. Paul A. Kirsch, Supervisor of Missions of the United Lutheran Synod of New York will be the speaker and scripture reading will be by the Rev. Mr. Cyrus Wallick of Maywood.

The plans of the architects, Cherry and Matz of New York, were approved in January. They call for a building of red brick with white limestone trim which will follow a modified English Gothic type of architecture.

## H.N.S. Speaker



Father Barnett, who is regent of Hudson College, Jersey City, will be one of the principal speakers at St. Peter's Holy Name Society's annual Communion Breakfast on Sunday. (Story below)

## Miss Emily Murray Honored At Surprise Shower

Miss Thelma Jensen of Stephen street was hostess Saturday evening at a surprise miscellaneous shower in honor of Miss Emily Murray of Washington avenue, who will be married Saturday to Robert Travers Southward of Union. Miss Seaman Southward and Mrs. A. B. Heck of Union, the Misses Gladys Patterson and Gladys Robertson of Kearny, Mrs. LeRoy Cooper of New York City and Mrs. A. E. Herrick of Lakehurst were the out of town guests. Belleville women attending the affair were Mrs. O. W. F. Hicks, Mrs. Ira Murray, Mrs. John Zipp, Sr., Mrs. L. N. Jensen and the Misses Katherine Barnes, Janet Moyer, Doris Murray and Kay MacDonald.

## Freeholder Gray Will Speak Before King Association

Walter S. Gray, member of the Essex County Board of Freeholders, will present an illustrated lecture on the workings of the county government at the regular meeting of the Joseph King Association at 414 Washington avenue Saturday night at 8.

## Expect 300 Will Attend St. Peter's Breakfast

Holy Name Society Will Hold Affair Sunday At  
Church; Rev. James R. Barnett, S.J., College Regent,  
And Others Will Speak; Duval Is Toastmaster

More than 300 men of St. Peter's parish will attend the sixteenth annual communion breakfast of the Holy Name Society of the church in the parochial school building Sunday morning, according to Thomas J. McLaughlin of 15 Smith street, chairman of the committee on arrangements. The society will receive Holy Communion at the 8 o'clock mass and will breakfast immediately after.

## Tulip Festival On Wednesday At School No. 9

The vast beds of tulips at School No. 9 are expected to be in full bloom by Wednesday so the annual tulip festival of the school has been set for that date. The grounds will be open to the public all day and pupils of the school will present "The Inn of the Golden Cheese" in the school auditorium at 8:30 in the evening.

The art supplies presented to the school by the Board of Education as a prize in the recent conservation contest sponsored by the board are now on display on the second floor of the school. The public is invited to inspect the exhibition.

## Search For Murderers Of Frank Frederick Going On Quietly

Youthful Gunmen Sought In Several  
States; Shooting Took Place

Early Sunday Morning

Two youthful gun-toting bandits wanted for the murder of Frank A. Frederick of 134 Hornblower avenue, Washington avenue lunch wagon proprietor, are in hiding hoping to escape the police net that has been thrown over several states since a few minutes after one of the pair pumped a death dealing bullet into Frederick's stomach in Ye Olde Tavern at 36 Holmes street early Sunday morning. Tight-lipped secrecy marks the activity of the local police who are being aided in the case by sleuths from County Prosecutor Wachenfeld's office in an effort to nab the pair. Police Chief George Spatz was non-communicative yesterday, stating only that many tips had been received and all were being thoroughly checked.

## TO HOLD BENEFIT FOR FAMILY

K. Of C. Leads In Movement  
To Aid Frederick's Wife  
And Children

The Belleville Council of the Knights of Columbus early Tuesday set in motion the machinery for a benefit for the family of the late Frank A. Frederick of 134 Hornblower avenue, who was fatally wounded Sunday morning by bandits' bullets. Thinking it would have the greatest popular appeal, the originating committee decided that the benefit should be a dance at the Elks Club May 29.

The committee has invited all social, church and fraternal orders in Belleville to send representatives to a general meeting to be held Tuesday night at 8:30 in St. Peter's auditorium. Members of the Board of Commissioners will act as honorary chairmen for the dance. Others who are already making plans are John Baney, Rocco Di Gregorio, Joseph C. Duval, Philip O'Toole, Victor Pomponio, Joseph Salmon and Charles B. Tedesco. The Elks Club has donated its hall for the occasion.

## Just Before Closing

The bandit pair entered the tavern, which is operated by Harvey Ziegler, about 2:50 Sunday morning, just before closing time. Police believe from their description that they were the same pair who held up the Radio Diner at 63 Main street early Saturday morning and escaped with \$26 from the cash register.

According to witnesses, Frederick had just finished a game of shuffleboard when the bandits entered. They commanded patrons to stick up their hands. One of the customers is said to have made a wisecrack to the effect that "they were only toy guns" and that they were not loaded.

"Just toys, huh?" said one of the thugs and he pointed the gun at the ceiling and pulled the trigger. The second man, and the real murderer, who was standing at the bar, turned part-way around and fired toward the rear of the room. The bullet entered the abdomen of Frederick, who was standing less than ten feet away.

The wounded man collapsed in a chair nearby. The bandits stared for a moment and panic-stricken fled through the door. No one in the tavern could say whether they escaped on foot or in a car. Frederick was rushed to St. Mary's Hospital and later removed to St. Michael's by his physician, Dr. Edward A. Flynn of 161 Washington avenue.

## Services This Morning

Frederick will be buried from the Frank McGee Funeral Home in Summer avenue, Newark, this morning. A solemn mass of requiem will be offered at 9 in St. Peter's Church. Interment will be in St. Peter's Cemetery. He is survived by his widow, Mrs. Catherine D. Frederick; six sons, Robert, Thomas, Frank, Jr., Joseph, John and Albert; and two daughters, Dolores and Mary. The children range in age from seventeen down to one.

Proprietor and manager of Frank's Diner at 264 Washington avenue for fourteen years and a resident of Belleville for eleven, Frederick was known all over town for his cheery disposition and original wit. Before entering the restaurant business he was a barber in Newark.

This was the first fatal shooting in Belleville since Ethel Sohl and Genevieve Owens murdered William Barhorst, bus driver, for \$2.10 at Main and William streets in December, 1938. The women are now serving life sentences.

## State Councilor At Meeting Of D. of A. Tuesday Night

State Councilor Jennie L. Moore and her staff of officers will visit Tuesday's meeting of the Good American Council, Daughters of America. The good and welfare committee of the council will arrange the hall in horseshoe banquet style.

DIAMONDS, WATCHES, JEWELRY, at prices always in line with the quality of the merchandise offered. Victor Hart, Jeweler, 457 Washington avenue, Belleville, N. J.



# Family Celebrates 81st Birthday of Mrs. Richter

It was a happy family gathering Friday evening at the home of Mr. and Mrs. William Kant in Cortlandt street when they celebrated the eighty-first birthday of Mrs. Kant's mother, Mrs. Johanna Richter, who makes her home with them. Guests included Battalion Chief and Mrs. Herman Richter and their daughter Gladys, and son Richard, Mrs. Elizabeth Metzler, the Misses Irene Schall and Mary Braun, Jess Lindsey and Anthony Metzler of Newark, Mr. and Mrs. Howard Sutphin and son Howard, Miss Grace Martling and Everett Martling.

Mrs. A. A. Dalzell of Tiona avenue was hostess last evening at bridge in honor of her house guest, Miss Elizabeth Campbell of Somerville, Mass. Guests were Mrs. Arthur Kunze, Mrs. Harold Crane, Mrs. Frank Dorman, Mrs. Herbert Bernard, Mrs. Edward Scharfberg, Mrs. Howard Virtue, Mrs. Elmer Gibbs and Mrs. Leslie Woodruff.

Mr. and Mrs. Ernest L. Johnson of Tiona avenue entertained Saturday afternoon in honor of the sixth birthday of their daughter, Anne. Guests were Jean Brohal of Bloomfield, Nancy Snyder of Nutley, Jeanne Collins of East Orange, Jane Moran of Brooklyn, Joan Kintzing, Carol Manley and Mary Grace Scane. Decorations were in pastel shades. The center piece was a Maypole, with dolls dancing around it.

Mrs. Frank Brown of Little street was hostess Thursday to her dessert bridge club. Those present were Mrs. E. J. Reese of Nutley, Mrs. John Dilly of Newark, Mrs. William Brown of Montclair, Mrs. DeWitt L. Gruman, Mrs. Harold Snook, Mrs. Earl Briggs, Mrs. Peter Goldschmitt, Mrs. Harold Peterson, Mrs. Daniel Reardon, Mrs. Charles Ludolph and Mrs. M. E. Wertz.

Miss Emily Murray of Washington avenue had as her guests Friday evening Mrs. W. H. Johnson and Mrs. Otto Schwartz of Blue Mountain Farms, Murray Hill; Mrs. Lester Sorum of Brooklyn, Mrs. Edward Glaspey, Mrs. John Zetterstrom, Mrs. Ralph Wohlforth and Miss Catherine Barnes.

Mrs. Edward Eska of Elizabeth, Mrs. Arthur Clark, Mrs. William Hunt, Mrs. William Irvine, Mrs. Clifton Smith, Mrs. Russell Sargent and Mrs. Herbert V. Handman attended their luncheon bridge club, yesterday at the home of Mrs. Edward Zellers of Newark.

## Is Bridge Hostess

Mrs. H. L. Hamilton of Holmes street was hostess Wednesday to her duplicate contract bridge club. Present were Mrs. F. S. Bootay of Montclair, Mrs. Winfield Stone, Mrs. George Cameron, Mrs. Otto Breunlich, and Mrs. F. Kenneth Mase. Guests for the afternoon were Mrs. Catherine Cocks and Mrs. A. K. McBride.

Mrs. Neils Madsen of Bloomfield, Mrs. Julius Meyer, Mrs. Paul Meyer, Mrs. J. H. Sedley, Mrs. A. E. Henry, Mrs. Carl Jensen, Mrs. Herbert May, Mrs. Edward Cassin and Mrs. Hans Hoffman attended their All Wool and a Yard Wide Club Tuesday evening at the home of Mrs. John Todd, Jr. of Newark.

Mrs. Chris Peterson, Mrs. Peter Johnson, Mrs. Michael Volpe, Mrs. George Goeke, Mrs. George Newman, Mrs. Leslie Woodruff and Mrs. Elizabeth Kibbee attended a bridge party held Friday evening by the Mothers Club at the Sigma Kappa Fraternity House at Stephens Institute, Hoboken.

The Tri-Town Twelve will entertain their husbands Saturday evening at a bowling party at the North Newark alleys. Attending will be Mr. and Mrs. Clarence Cameron, Mr. and Mrs. Harold Keisler, Mr. and Mrs. Kenneth Makant, Mr. and Mrs. Charles Michaelson of Bloomfield, Mr. and Mrs. Paul Renke of Nutley, Mr. and Mrs. Arthur Bloemke, Mr. and Mrs. Arthur Dey, Mr. and Mrs. William King, Mr. and Mrs. John Lennox, Mr. and Mrs. Howard Sutphin and the Misses Gladys Reyle and Grace Martling.

Miss Ina Belle Collins of De Witt avenue entertained her bridge club Friday evening at a stork shower in honor of Mrs. Cornelius DeJonge of Malone avenue. Present were Miss Alice Miller of Newark, Mrs. Thelma Pettitt Ford and the Misses Eileen Lynch, Doris Scharfberg, Doris Solaun and Betty Sheehan.

Mrs. Loretta Dow of Van Rensselaer street entertained last evening for the Ladies Pinocchio Club. Attending were Mrs. Harry Hood, Mrs. William Hood, Mrs. Charles Hood, Mrs. Roy Hilton, Mrs. Edward Rochau, Mrs. Rudolph Zoeller, Mrs. Robert Andrews and Mrs. John Comsky.

Mrs. John Charlton of Union

Order Your  
**AWNINGS**  
Now For Spring Delivery  
and Take Advantage of Our  
**LIBERAL DISCOUNT**  
Venetian Blinds, Window  
Shades, Upholstering

**J. M. HIRSCH**  
539 Joralemon Street  
Belleville, N. J.  
Tel. Belleville 2-1981

# ARRANGE MOTHER'S DAY PROGRAM

Annual Tribute Will Be Held  
Sunday Morning At  
Congregation A.A.A.

The Religious School of Congregation Ahavas Achim, Anshe will hold its annual Mother's Day celebration Sunday morning at 10 in the social hall of the Congregation, 317 Washington avenue. The program is in charge of Rabbi Rubin R. Dobin, school principal.

Included in the program will be numerous numbers of interest to children and parents. Featured will be extemporaneous Mother's Day Tableau to be presented by the audience. Another number on the program will be the "Flower Salute" in which every child will receive a flower plant for presentation to his or her mother. Rabbi Dobin will deliver a short talk on "Mothers in Israel."

As in previous years, all parents, mothers and fathers are invited to attend. The observance will end with the planting of a tree on the Synagogue terrace in honor of all local parents. The Sisterhood of the Congregation is cooperating with Rabbi Dobin in completing arrangements. The committee includes Mrs. Nellie Rochlin, Mrs. Ida Lempert, and Mrs. Anna Goldstein.

## Adolph Gross Is New President Of Passaic Avenue P.T.A.

Adolph Gross of Joralemon street succeeds George Harrison as president of the Passaic Avenue School Parent-Teacher Association for the school year 1940-1941.

Other officers who have been elected are: Mrs. John Papera, first vice-president; Mrs. Stanley Hardwick, principal of the school, second vice-president; Mrs. Walter Johnson, second grade teacher, recording secretary; Mrs. Christian Gabrielson, corresponding secretary; and Mrs. Philip Di Sturco, treasurer.

# Two Miscellaneous Showers For Wilhelmina Cove

Friends showered Miss Wilhelmina Cove of Little street with gifts twice this week. Friday night she was surprised at a party held at the home of Mrs. Carlisle Logan of Bremond street. Most of the guests were employees of the Eastwood-Neally Corp. and came from Bloomfield, East Orange, Nutley and this town. She was honored again Tuesday night at an affair given by her sister-in-law, Mrs. John Cove, Jr., of Little street. Decorations were in pink and yellow. Both were miscellaneous showers. Miss Cove's marriage to Francis E. Evans of Passaic will take place on May 30.

Mrs. Matthew Atkinson of Bremond street will be hostess tomorrow at dessert bridge. Present will be Mrs. Ernest Powell of Nutley, Mrs. Howard Richards, Mrs. George Newman, Mrs. Sylvester Frazer, Mrs. Eleanor Brooks and Mrs. Walter Babbitt. Mrs. Walter Peters will be the guest.

Mrs. Sidney Browne and the Misses Regina R. Lynch, Rose Connolly, Justine Boylan, Marjorie Haslam, Gladys Jacob and Ruth Chappel will attend a meeting of the E. N. C. Club tomorrow evening at the home of Mrs. Wilbur Snyder of Newark.

Mrs. Kenneth Wands of Smallwood avenue entertained her bridge club Thursday evening. Present were Mrs. Raymond Brand of Bloomfield, Mrs. John Daly and Mrs. George Turner.

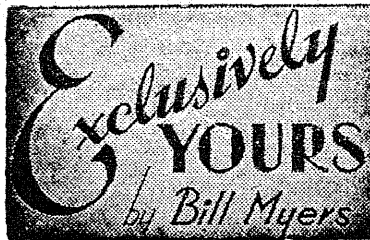
Mrs. Lindley Graves of Cortlandt street had as her guests for a few days her sister, brother-in-law and nephew, Mr. and Mrs. Henry Goellner and son, Thomas, of Port Gibson, N. Y.

Mrs. William Hood of Academy street was hostess to her sewing club Monday evening. Attending were Mrs. James Woods, Mrs. William McLaughlin, Mrs. Sarah Dobie, Mrs. John Boylan and the Misses Mary, Agnes and Margaret Woods of Bloomfield and Mrs. John Garner of Newark.

## In "Young Tom Edison"



The two juvenile stars, Mickey Rooney and Virginia Weidler, are shown in a scene from "Young Tom Edison," which opens for a three-day run at the Capitol Theatre on Sunday. The accompanying feature will be "The Ghost Comes Home," with Frank Morgan, Billie Burke and Nat Pendleton.



THE shore, off to a slow start because of the freak weather of April, looks for a brisk season. All along Ocean Avenue from Highlands to Spring Lake palatial mansions are undergoing repairs, getting fresh coats of paint, shedding their barred windows, and looking very regal again. Parking meters are clicking with deposits, the pin ball games make noisy encore to the thunder of the breakers, and children romp over the sand with pails and shovels.

Tuesday, with a temperature of 79 looked like July on the beach outside the Berkeley-Carteret. A score or more of city dwellers who had motored down lay sprawled on the sand. A portable radio was explaining the British retreat in Norway. A child threw sand and some of it went down her father's neck and you could hear the none-too-gentle slaps he gave her with his open hand. And her howls echoed and re-echoed back over the boardwalk.

Farther along the boardwalk toward Convention Hall we stopped for a glass of Alderney milk, which, the girl told us, is every bit as popular at the shore as back in Essex, and later we saw two of the huge Alderney special seashore delivery trucks on their last lap from Newark to the big Alderney Asbury Park plant. The white and blue colors of the Alderney trucks somehow blend nicely with the general cleanliness of Asbury Park, a city we have admired since we were old enough to reach for a brass ring on the famous old carousel by the lake.

We had the pleasure of meeting Mrs. Will Oakland, who with Viola Root Cameron, intend to open a smart, new restaurant — possibly at what is now called Maison Polci on Monmouth road, near Eatontown. Mrs. Oakland has been interested in successful restaurant businesses for many years and Mrs. Cameron is the former internationally-known geologist, with offices in New York, Paris, London, Berlin, Amsterdam and Miami. She has compiled and published the family histories for some of the world's first families, and her research has brought forth coats-of-arms and crests believed to have been lost forever.

THE place Mrs. Oakland and Mrs. Cameron have in mind for their restaurant is on New Jersey's most famous historical highway, Monmouth Road, originally an Indian trail, was an overland supply route for the Continental Army and the British used it following their retreat in 1778 from Philadelphia to Freehold where the decisive battle of Monmouth was fought.

SHORT, shorts: — Caldwell's George and Martha Washington have a son, George Washington, Jr. . . . The Kungsholm's Nils Bruhn attended the State Hotel Convention at Atlantic City . . . The Mayfair's Howard Marsh makes the Treat's cocktail lounge a regular stop when he comes out of the mountains . . . John Tos's Condon, Livingston, is in summer dress . . . The column's favorite highway — Route 10 — with a stop at the Alderney Milk Barn . . . Jack Cass of The News is hoping nothing happens to little Holland. — Adv.

## Film Epic At Franklin



Vivien Leigh as Scarlett O'Hara and Clark Gable as Rhett Butler in the screen version of "Gone With The Wind" now playing at the Franklin Theatre, Nutley. Among the supporting players are Olivia de Havilland, Leslie Howard and Thomas Mitchell.

## Clan Stewart Will Sponsor Card Party May 28

Clan Stewart will sponsor a card party at the Woman's Club of Nutley, May 28. Mr. and Mrs. John McRae of Belleville and Mr. and Mrs. James Kemp of Nutley are in charge of arrangements. Alexander Leslie of North Arlington, a member of the local clan, will be drillmaster to the

men's team of Clan McLeod and the ladies' team of the Blue Bells, both of Jersey City, in the drill which will be held at the Belleville Elks May 25.

## Movie Times

KENT — NO. NEWARK  
Fri. — "Earl of Chicago;" 2.40, 8.30.  
Sat. — "Bluebird;" 1.20, 5.00, 8.10.

# Wessel's New Store

69 Washington Street Bloomfield, N. J.

(Formerly A. Henry Strubbe)

MOTHERS' DAY SPECIALS IN  
Delicious Home Made Chocolates

ICE CREAM BRICKS AND  
SPECIAL MOLDS

Delivery Service Phone Bloomfield 2-0626

(Formerly 677 Mt. Prospect Avenue, Newark)

We Are Always Pleased To Welcome Our Belleville Friends

## STARTING TUESDAY, MAY 14th NEW POLICY

TWO BANDS — CONTINUOUS DANCING

VAN ALEXANDER  
AND HIS ORCHESTRA

featuring  
PHYLIS KENNY and "BUTCH" STONE  
ALSO RHUMBA — CONGA BAND

DINNER AND SUPPER DANCING

NEVER A COVER CHARGE

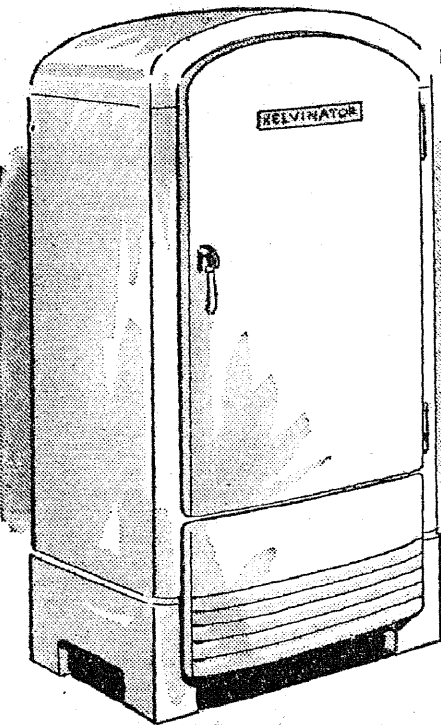
Minimum After 9 P.M. — \$1.00

## CLUB EVERGREEN

Belleville Ave. — Route 23 — Bloomfield, N. J.

# It's Your Problem

PLANNING MEALS comes in your department. Others may offer suggestions but the decision usually rests with you. "What to serve" is simplified if you have a Kelvinator. Delicious desserts can be made in the ice trays and foods keep their freshness and flavor for days in the storage compartment.



KELVINATOR electric refrigerators operate automatically and they are inexpensive to maintain. You can purchase a six cubic foot model for only \$114.75. Small carrying charge added if you buy on terms.

**PUBLIC SERVICE**

"Earl of Chicago;" 2.40, 8.30, 8.30.  
Sun. — "Shop Around The Corner;" 2.00, 8.20, 9.40.  
Mon. — "Castle on the Hudson;" 1.30, 5.15, 8.20.  
Mon. and Tues. — "Castle on the Hudson;" 1.30, 7.00, 10.00.  
Wed. and Thurs. — "British Intelligence;" 1.30, 7.00, 9.45.  
Fri. and Sat. — "Married and In Love;" 2.50, 9.45.

CAPITOL—BELLEVILLE  
Today — "Pinocchio;" 2.25, 7.15, 10.15.  
Fri. — "Pinocchio;" 2.25, 7.15, 10.15.  
Sat. — "Pinocchio;" 2.25, 7.15, 10.15.  
Sun. — "Pinocchio;" 2.25, 7.15, 10.15.  
Mon. — "Young Tom Edison;" 1.45, 4.05, 7.10, 10.20.  
Mon. and Tues. — "The Ghost Comes Home;" 2.45, 5.15, 8.25.  
Wed. and Thurs. — "The Ghost Comes Home;" 2.45, 5.15, 8.25.  
Fri. — "Northwest Passage;" 2.45, 5.15, 8.25.  
Sat. — "Private Detective;" 1.45, 7.20, 11.00.

**CAPITOL**  
362 WASHINGTON AVENUE, BELLEVILLE  
PHONE—BELLEVILLE 2-1097

NOW THRU SAT.  
WALT DISNEY'S  
**"PINOCCHIO"**  
in Technicolor  
GEORGE BRENT  
ISA MIRANDA

"Adventure In Diamonds"

EXTRA: FRI. EVE. AT 8:30  
"OLD TIME MOVIES"

SAT. MAY 11  
Doors Open 10:45 a.m.  
For "Pinocchio"

Come Early — Avoid Crowding

SUN., MON., TUES.  
**MICKEY ROONEY**  
"Young Tom Edison"

also  
"The Ghost Comes Home"

Frank Morgan, Billie Burke

Wed. Thru Sat., May 15-18.  
**SPENCER TRACY**  
"Northwest Passage"

in Technicolor  
ROBERT YOUNG  
WALTER BRENNAN

also  
"Private Detective"

Jane Wyman, Dick Foran

Jane Wyman, Dick Foran

Jane Wyman, Dick Foran

Jane Wyman, Dick Foran

Jane Wyman, Dick Foran

Jane Wyman, Dick Foran

Jane Wyman, Dick Foran

Jane Wyman, Dick Foran

Jane Wyman, Dick Foran

Jane Wyman, Dick Foran

Jane Wyman, Dick Foran

Jane Wyman, Dick Foran

Jane Wyman, Dick Foran

Jane Wyman, Dick Foran

Jane Wyman, Dick Foran

Jane Wyman, Dick Foran

Jane Wyman, Dick Foran

Jane Wyman, Dick Foran

Jane Wyman, Dick Foran

Jane Wyman, Dick Foran

Jane Wyman, Dick Foran

Jane Wyman, Dick Foran

Jane Wyman, Dick Foran

Jane Wyman, Dick Foran

Jane Wyman, Dick Foran

Jane Wyman, Dick Foran

Jane Wyman, Dick Foran

Jane Wyman, Dick Foran

Jane Wyman, Dick Foran

Jane Wyman, Dick Foran

# FRANKLIN

Thurs., Fri., Sat., May 9, 10, 11.

Your Last Chance  
To See  
**GONE WITH THE WIND**  
in 1940

Eve. Show 8 p.m.

All Seats Reserved \$1.10

Mat. Thurs. and Fri. 1:30 P.M.

Sat. Continuous

10 a.m. — 6 p.m. — 75c

All Prices Include Tax

Sun., Mon., Tues., May 12, 13, 14.  
**SPENCER TRACY**  
**HEDY LAMARR**  
"I Take This Woman"

CO-FEATURE  
Jackie Cooper, Betty Field  
"Seventeen"

Wed. thru Sat., May 15-18.  
**MICKEY ROONEY**  
**FAY Bainter**  
"Young Tom Edison"

CO-FEATURE  
Frank Morgan, Billie Burke  
"The Ghost Comes Home"

Thurs., Fri. Library Nights.  
Sat. Cash Award

## CLAIRIDGE NOW

MONTECLAIR CENTER Thru Tues.

FRANK MORGAN, BILLIE BURKE  
"The Ghost Comes Home"

WED. THRU SAT., MAY 15-18.  
**SPENCER TRACY**  
"Northwest Passage"

in Technicolor  
ROBERT YOUNG  
WALTER BRENNAN

also  
"Private Detective"

Jane Wyman, Dick Foran

Jane Wyman, Dick Foran

Jane Wyman, Dick Foran

Jane Wyman, Dick Foran

Jane Wyman, Dick Foran

Jane Wyman, Dick Foran

Jane Wyman, Dick Foran

Jane Wyman, Dick Foran

Jane Wyman, Dick Foran

Jane Wyman, Dick Foran

Jane Wyman, Dick Foran

Jane Wyman, Dick Foran

Jane Wyman, Dick Foran

Jane Wyman, Dick Foran

Jane Wyman, Dick Foran

Jane Wyman, Dick Foran

Jane Wyman, Dick Foran

Jane Wyman, Dick Foran

Jane Wyman, Dick Foran

Jane Wyman, Dick Foran

Jane Wyman, Dick Foran

Jane Wyman, Dick Foran

Jane Wyman, Dick Foran

Jane Wyman, Dick Foran

Jane Wyman, Dick Foran

Jane Wyman, Dick Foran

Jane Wyman, Dick Foran

Jane Wyman, Dick Foran

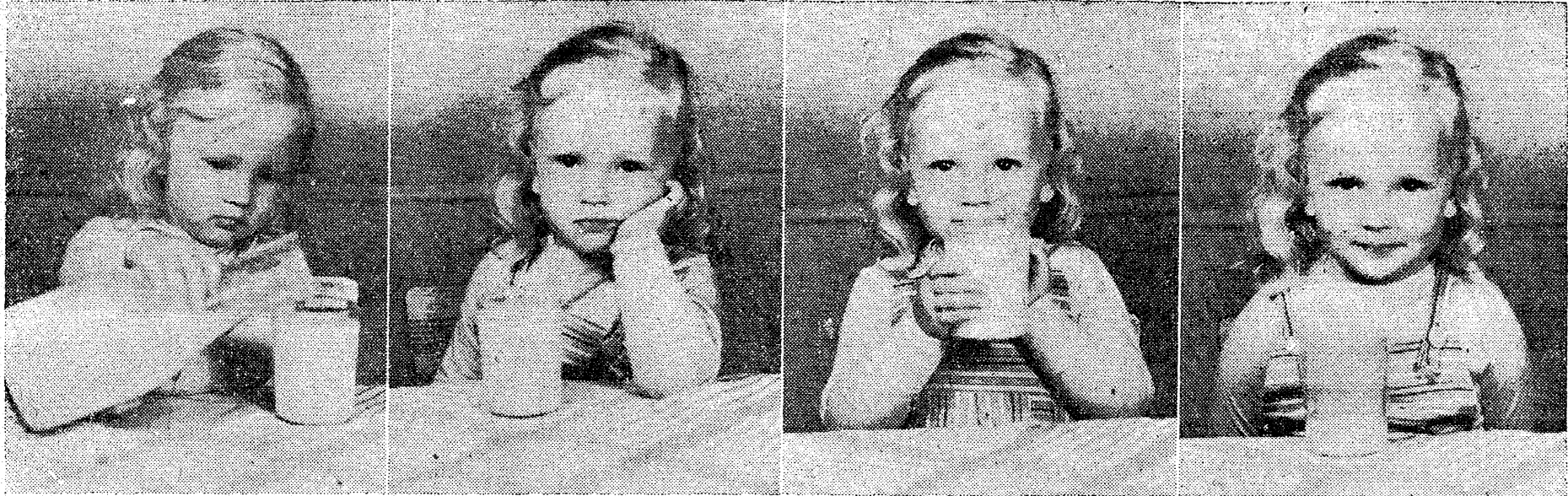
Jane Wyman, Dick Foran

Jane Wyman, Dick Foran

Jane Wyman, Dick Foran



### "Movie" Of A Little Girl Drinking Her Alderney Milk



Three-year-old Athena Freligh, fresh from play, relaxes with a cool glass of of Alderney "A." Preferring to pour her own, she keeps the cameraman in jitters as she holds the heavy quart bottle. Filling her glass to the brim, she pauses to look

fondly at the glass before her first sip. Then — whe-e — it's all gone, and little Athena smiles with satisfaction as her mother prepares her crib for the afternoon nap. — Adv.

### WOMEN CONVENE NEXT WEEK

Local Representatives Will Attend Women's Clubs Convention In Atlantic City

The annual convention of the New Jersey State Federation of Women's Clubs will be held in Atlantic City Tuesday, Wednesday, Thursday and Friday. Attending from Belleville will be Mrs. Elmer S. Hyde, Women's Club president, who is chairman on resolutions at the convention, Mrs. John Denike, vice-president of the local club and Mrs. Matthew J. Atkinson. Mrs. Morris Rochlin will also attend as publicity chairman of the Eighth District of the State Federation.

The convention will be opened Tuesday evening with the procession of club presidents. On Tuesday evening the group will be addressed by Rabbi Morris S. Lazarian of Baltimore who has chosen as his topic "Forward to the Past." A musical program will be presented on Wednesday followed by an address by T. Alfred Fleming, national figure in conservation and fire prevention week, who will discuss Hazards in the Home.

### HOFFMAN RECORD BRIGHT PAGE

Fred Ehrlich Says Opponents Can Not Match Candidate's Achievements

Addressing a group called the Ehrlich Volunteers who are pledged to vigorously project his Regular Republican Organization candidacy for the State Committee, Fred Ehrlich last evening praised the administration of former Governor Harold G. Hoffman as "one of the bright pages in the history of New Jersey government."

Ehrlich pointed to the Hoffman feat of balancing the state budget in each of the three years of his term and the reduction of the cost of government by millions of dollars.

"Let Harold Hoffman's track record match that outstanding record," said Ehrlich.

The Hoffman campaign in Essex County is developing fast. Countless meetings have been planned for the remaining days of the campaign with Hoffman making many personal appearances.

#### Company and Union Agree

Employees of Isolantite Corporation will receive a pay increase of five cents an hour, effective immediately. This and other concessions were the basis on which an agreement was signed recently by officials of the company and leaders of the American Federation of Labor, which organized the workers a month ago.

According to the terms of the contract, Fourth of July and Labor Day will be holidays with full pay; all employees with from one to five years' service will have a week's vacation with pay, those with more than five years will get two weeks; employees will get time and a half for all work over forty-two hours.

### Town Clinic Draws 400



More than 400 youngsters were inoculated at the diphtheria clinics conducted last week by the town at the Town Hall and the Silver Lake Community House. The picture above shows a small child being inoculated by Dr. Joseph Caputo. Others from left to right are Health Officer Eugene T. Berry and Commissioner King, both of whom arranged and supervised the clinic, Mary Millar and Helen Gillen, town nurses.

### ALUMNI GROUP MEETS AT H.S.

Will Make Plans For Reception To Seniors At Gathering Wednesday Night

Arrangements have been made to accommodate the more than 250 graduates of the high school who are expected to attend the second general meeting of the new Alumni Association in the high school Wednesday night at 8. Plans for an invitation dance for the Class of '40 will be discussed. A social period will follow.

The senior class will be feted by the association June 7 in the new gymnasium of the school when they will be welcomed into the alumni ranks. Committees to arrange for the dance will be appointed Wednesday.

Several proposals will be made by members for consideration of the association. There is a definite feeling in the organization that an annual award should be given either to a member of the senior class or to an outstanding resident. Also on the docket is the discussion of plans to inaugurate a homecoming football game for the alumni to be followed by a dinner and dance.

#### School No. 1 Parents Will Meet

The Parent-Teacher Association of School No. 1 will meet Monday evening for election of officers. There will also be a program which will include as the speaker a pilot from the Newark Airport and a motion picture on ice cream manufacturing. Pupils of the 8B, under the direction of Miss Frances Williamson will give a demonstration of history slides.

### Mrs. Emil Kastner Chosen Leader of Elks' Auxiliary

Mrs. Emil Kastner, wife of the former Exalted Ruler, was elected president of the reorganized Ladies Auxiliary of the Elks Club at a special meeting Monday night. An auxiliary existed until three years ago when it was disbanded.

Other officers named were Mrs. Wallwin H. Masten, vice-president; Mrs. Henry Charrier, secretary; Mrs. Arthur E. Mayer, treasurer; Mrs. Charles Young, chaplain.

### Dr. Ingvaldstad Will Discuss Situation In Sweden

The Belleville Teacher's Association, which is sponsoring a lecture at 8 on Tuesday evening at School No. 8 by Dr. Frederick Ingvaldstad, has announced that he will include in his talk on the international situation as much up to the minute discussion of the problems of Sweden as it is possible to obtain. The Swedish Folk Festival Society of the Oranges will present, following the lecture, a group of dances in costume representing the various provinces of Sweden.



**Your Family Could be Enjoying MOTORSTOKOR COMFORT NOW!**

As Spring arrives, resolve that you will never shovel coal or ashes again. But resolve, too, you will never burn anything but anthracite, the fuel your furnace was made to burn.

MOTORSTOKOR furnaces can be installed in your present furnace. They'll burn the low-priced sizes of anthracite, costing 1/3 less. They'll stoke it, put ashes into sealed containers, keep absolutely even heat—supply hot water—all for a few pennies in electricity. See MOTORSTOKOR furnaces in action. Now's the right time.

**INSTALL NOW NO MONEY DOWN**  
No Payments Until Oct. 15.

**New Jersey Coal & Supply Co.**  
119 E. Centre Street  
Nutley, N. J.  
Phone Nutley 2-1000

### COMMUNITY HOUSE WORK TOLD

Federation Trustees Hear Report of Mrs. Martha Herkins Telling of Program

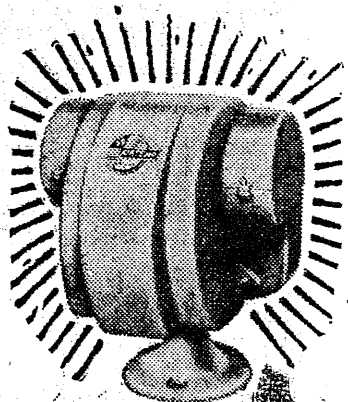
The board of trustees of the Welfare Federation met Tuesday night at the offices, 338 Washington avenue, and heard Mrs. Martha Herkins, head director of the Silver Lake Community House, summarize the social and moral life of the Community House.

The shelter house is non-sectarian, includes groups of boys and girls, men and women, young and old, with about 500 individual members. Although the Community House is sponsored and supported mainly by the Newark Welfare Federation, approximate-

ly one-fifth of the members come from Newark, the rest from Belleville. It is one of the participating agencies in the Belleville Community Chest.

Mrs. Herkins explained the activities of the house were varied, made up as clubs, classes, teams, social and athletic affairs, gymnasium, game rooms, library, playground and baby keep-well station. The total attendance for the year in these activities numbered about 55,000.

### CHRYSLER'S AIRTEMP TWIN AIRFLOW OIL BURNER



The first major improvement in oil burners in ten years. This superior method of burning oil gives MORE HEAT at LOWER COST. Let us demonstrate how you can SAVE MONEY.

**INSTALL NOW NO MONEY DOWN**  
Make no payments until OCT. 15, and then pay only 20c A DAY.

### JERSEY APPLIANCE CO.

529 Washington Avenue  
Belleville  
Tel. Belleville 2-1616  
OPEN EVENINGS

### F & F Meat Market

Belleville's Greatest Quality Market  
384 UNION AVE. BELLEVILLE

Best of Quality — Cheerful Service  
Free Delivery Anywhere in Belleville

|                                     |                     |  |
|-------------------------------------|---------------------|--|
| Quality You Can Buy With Confidence | Prime Quality MEATS | World's Finest Meats Lowest Priced Daily |
|-------------------------------------|---------------------|--|

Meat & Fish Specials on Sale Thurs. - Fri. - Sat.

SWIFT'S GOLDEN WEST—FRESH KILLED FOWL 4 to 6 lb. Average 25¢

HORMEL'S BUFFET STYLE Virginia Baked Hams 29¢

Something Entirely Different — Ready To Eat — Whole or Shank Half

Prime Ribs of Beef 23¢

Cut From First Six Ribs

MU'S SUGAR CURED LEAN COTTAGE HAM 25¢

ALL POPULAR BRANDS SLICED BACON 2 1/2 lb. pkgs. 25¢

SWIFT'S BROOKFIELD BUTTER 31¢

PARD SWIFT'S DOG FOOD 3 cans for 25¢

SEA FOOD SUPER-SPECIALS!

|                                 |                           |                        |                    |
|---------------------------------|---------------------------|------------------------|--------------------|
| Fresh Boston Mackerel Large 10¢ | Fresh Caught Buck Shad 8¢ | Fresh Jumbo Shrimp 20¢ | Fresh Scallops 25¢ |
|---------------------------------|---------------------------|------------------------|--------------------|

These Meat Specials on Sale Mon., Tues., Wed. May 11, 12, 13

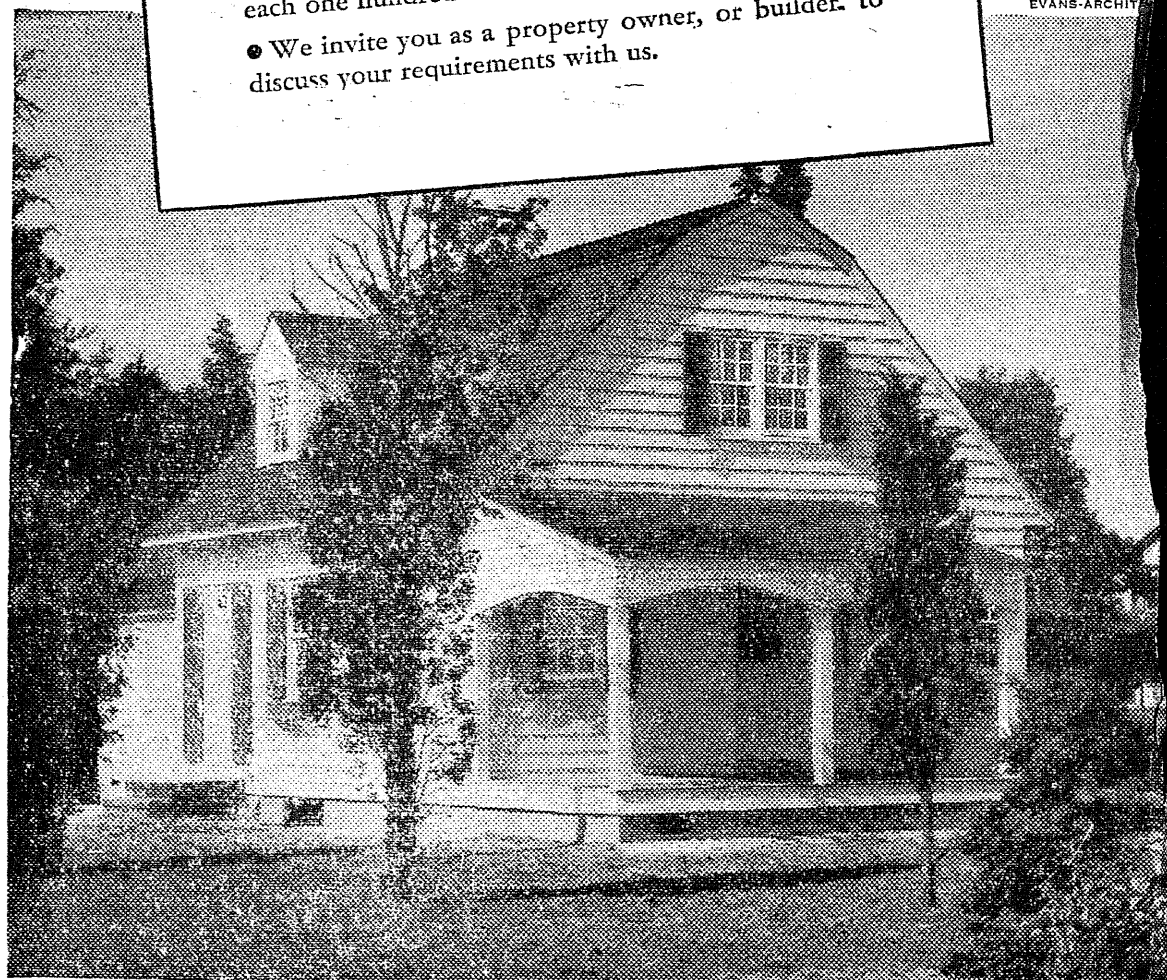
|                          |                        |                        |                                  |
|--------------------------|------------------------|------------------------|----------------------------------|
| Fresh Sliced Bologna 15¢ | Fresh Chopped Beef 19¢ | Fresh Lamb Patties 29¢ | Fresh Made Daily Ham Patties 39¢ |
|--------------------------|------------------------|------------------------|----------------------------------|

Try Our "Shop-by-Phone" Service and Find out that here you can Buy with Confidence and Self-Satisfaction — the best of Quality Meats at Super-Market prices. Come in anytime and meet our Courteous Clerks and enjoy our cheerful and friendly service.

Phone Us Today Belleville 2-2612

## Modernize and Repair your Home

- Some alterations about your property might make it much more livable and much more profitable.
- The Federal Housing Administration Plan enables any property owner to make a loan at a very low rate for a loan of this type, that is, one repayable in monthly installments. The cost is only \$5.00 per year for each one hundred dollars borrowed.
- We invite you as a property owner, or builder, to discuss your requirements with us.



### The Peoples National Bank and Trust Company

237 Washington Ave. Belleville, N. J.  
(Opposite the Post Office)  
Member Federal Deposit Insurance Corporation

### ESSEX LUMBER AND COAL CORP.

LUMBER • COAL • MASON MATERIALS  
Cor. Joralemon and Cortlandt Streets, Belleville, N. J.

ALL KINDS of LUMBER  
Wallboards  
Plywood  
Screens  
Sash and Doors  
Roofing

Under Sole Management  
F. H. BRIDGE  
Fair Prices  
No Delivery Charges  
ANTHRACITE COAL

MASON MATERIALS  
Cement  
Lime  
Plaster  
Sand and Stone

### HUNDREDS of FAMILIES

Have Bought

## WHITE OAKS MODEL HOMES

... because they could not resist the beauty, comfort and environment which these homes offer, in addition to the exceptional values received. We invite you to see for yourself. You'll not be disappointed.

## WHITE OAKS NEW DEVELOPMENT

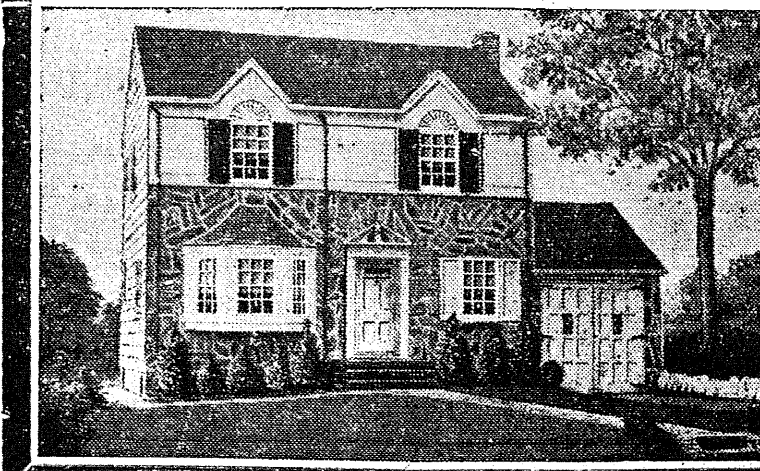
IN BELLEVILLE

**\$4,990 UP**

**\$40 MONTHLY**  
on FHA Plan



Located in the exclusive section of Belleville; high, beautifully wooded with age-old trees; high elevation; exceptionally large rooms; adjacent to schools, shopping and transportation.



DIRECTIONS: Drive on Union Ave., 500 ft. North of Greylock Parkway, Belleville. Then follow arrows to furnished model home.

MODEL HOME  
Furnished by  
BERMAN ROESSLER  
47 Market St.  
Newark

### FLOWERS and PLANTS For MOTHER'S DAY

Pansies . . . 7 boxes - 95c

Mountain Pinks — English Daisies  
Selected Geraniums

Home Grown Rhubarb and Scallions  
Fresh Jersey Asparagus — Selected Tomatoes  
PHONE ORDERS PROMPTLY DELIVERED FREE

## PLENGE FARM

Franklin Avenue and Joralemon Street Belleville, N. J.  
John Plenge, Manager Phone Belleville 2-1268



# The Big Boy Gets The Prize



Well, it looks like the little fellow in this picture is going to win the prize award this week. The photographer snapped the picture the other afternoon while his mother was listening to the salesmen for Sears, Roebuck & Co. explain to her why she should purchase one of the refrigerators now on display at their Washington avenue store. If the mother of the fortunate little man will call at The News office, 323 Washington avenue, she will receive a \$5 purchase order good at the Sears' store.



## SPORTS BEFORE YOUR EYES

By Joe Duval

### We Finally Got Started

After two months of dicker the Belleville Softball Tournament finally has found a bed to lie in. No sooner had the word come in that we could have the Turf Bog (your columnist is chairman of the Belleville committee) than the machinery, which had lain dormant for so long, began to grind. Interest in the event is high in Nutley where the worthy townspeople are still smarting under the shutout belching Bernie Barnett and the Senators dealt their way in '38. There is more at stake for the teams which participate in this tourney than medals and trophies. There is that chance to wallop Nutley again, there is the honor of representing Belleville in the tourney in mid-September.

The importance of attending the organization meeting at the Recreation House two weeks from now cannot be stressed too much. Teams will not be required to make their entries then, but all the rules of the tournament will be discussed and explained. Every man which thinks there is a possibility that it might enter would see to it that its man attends.

Well did what he should have done long ago — took the reins in his hands and settled the education problem, at least temporarily. While there were notices and sighs of relief around town on the word noised about that Recreation Department had voted "We Can Get Along Without You Very Well" as its theme, there was still an undercurrent of regret that Education could not find time to sit down to discuss such an important phase of civic life as the proper rearing of its youth. This is no attempt to shift responsibility onto the shoulders of what we consider one of the finest groups of men in town. But we honestly feel that, whether or not it made any effect on their decision to close the season for the summer, they did at least have been willing to sit down for a few minutes to discuss the problem and try to find the other side of the picture.

Now has come to the conclusion that a bird in the hand is worth two in the bush. When his efforts and the work of Mayor Williams try to get the Board of Education came to naught, he stepped in and got the Turf Bog, just to make sure that Belleville's athletic program would not collapse together.

### Suing Challenges

One member of the Triangles, though a third party, has asked to issue a challenge from the Triangles to the Senators and to the Cardinals for a series of games to settle the question of supremacy. We know this is not an official request from the Triangles, but we still think it a swell idea. Baseball has fallen to such low depths of popularity that desperate means are needed to revive it in town. Round robin series between the only two senior teams in Belleville would be a step in the right direction.

The high school diamonders are off the error standard for the first time Tuesday afternoon, while it did not win a lot, it did make them look a lot better to the spectators. Can't understand what happened to the boys in the Good Counsel and side games; they certainly were the win-wins, as Annie they would say. They all but decided to the Gaels, the Hillside had easier sailing with the Blue and Gold but- tings. Only one miscue ended the encounter with Central, which is more like the ball game. The Bellboys were playing at the time of the season.

### Stars Lose To Indians

The Clifford Indians rallied in late innings to trip the Belleville Templars 12-10 in a slugfest at Riviera Park Sunday noon. The Templars lost the advantage in the Indians' uprising in the eighth.

## FEDERAL SOFTIES TAKE LEAD

Team Starts Off Well; Cop First Two Games In Industrial Loop

| Team               | W. | L. | Pct.  |
|--------------------|----|----|-------|
| Federal Leather    | 2  | 0  | 1.000 |
| Viking Tool        | 1  | 0  | 1.000 |
| Eastwood-Neely     | 0  | 0  | .000  |
| Sonneborn          | 0  | 0  | .000  |
| Wallace & Tiernan  | 0  | 0  | .000  |
| Bart Laboratories  | 0  | 1  | .000  |
| Carson Newton      | 0  | 1  | .000  |
| Sweeney Lithograph | 0  | 1  | .000  |

Federal Leather took a running start on the rest of the Industrial Softball League last week by copying its first two games. The Leathermen had a scare in the first contest when Carson Newton came close to upsetting the applicant but Federal came through with a brace of tallies in the last half of the seventh to save the decision 15-14.

Three days later they came back from a 4-0 deficit to trim the newcomers, Bart Laboratories 8-4. Federal faces its toughest obstacle tonight when it meets the defending champs, Wallace & Tiernan at Belleville Park. W&T will be opening its season.

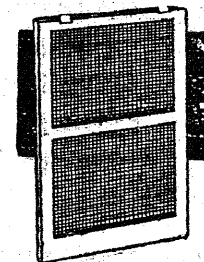
Viking Tool tossed a nine-run bombshell in the faces of Sweeney Lithograph in the sixth inning of their contest last week and won out 14-8. Sweeney had taken the lead in the first half of the same frame with a three-run rally.

| F. Leather  | ab | r | h | Carson-N. | ab | r | h |
|-------------|----|---|---|-----------|----|---|---|
| F. Phillips | 5  | 2 | 2 | Udvarhely | 5  | 2 | 4 |
| Trainer     | 5  | 2 | 2 | Udvarhely | 5  | 2 | 4 |
| Marion      | 5  | 2 | 2 | Udvarhely | 5  | 2 | 4 |
| Trainer     | 5  | 2 | 2 | Udvarhely | 5  | 2 | 4 |
| Zuker       | 3  | 1 | 2 | DeOrio    | 4  | 3 | 1 |
| Czarno      | 4  | 1 | 2 | W. Jech   | 4  | 3 | 1 |
| Bosco       | 4  | 1 | 2 | Brienza   | 4  | 3 | 1 |
| Cafone      | 4  | 1 | 2 | Duffy     | 4  | 3 | 1 |
| Cullen      | 2  | 2 | 1 | Galante   | 4  | 0 | 0 |
| Meyers      | 4  | 2 | 3 | G. Jech   | 4  | 0 | 0 |
| Kievitt     | 2  | 0 | 0 |           |    |   |   |
| Kempie      | 0  | 0 | 0 |           |    |   |   |
| Hudson      | 0  | 0 | 0 |           |    |   |   |

| Viking Tool | ab | r | h | Sweeney L. | ab | r | h |
|-------------|----|---|---|------------|----|---|---|
| Conroy      | 4  | 3 | 1 | Biddle     | 4  | 2 | 1 |
| Swanson     | 4  | 3 | 1 | Rossi      | 4  | 2 | 1 |
| Murphy      | 4  | 1 | 2 | Hockin     | 2  | 1 | 1 |
| Matt        | 4  | 0 | 2 | Manning    | 3  | 1 | 0 |
| Dora        | 4  | 1 | 2 | Paterson   | 4  | 0 | 1 |
| Caroly      | 4  | 1 | 0 | Hockin     | 4  | 1 | 4 |
| Lewis       | 0  | 1 | 0 | Dillon     | 1  | 1 | 0 |
| Kimer       | 1  | 0 | 0 | Yingling   | 1  | 0 | 0 |
| Bleski      | 4  | 1 | 1 | Higgins    | 1  | 1 | 0 |
| Renz        | 2  | 3 | 2 | Young      | 2  | 0 | 0 |
| Burns       | 2  | 0 | 0 | Lee        | 2  | 1 | 1 |
| Bleski      | 0  | 1 | 0 | Piller     | 2  | 1 | 1 |
|             |    |   |   | Curtin     | 3  | 0 | 1 |

| Bart. Lab.  | ab | r | h | F. Leather  | ab | r | h |
|-------------|----|---|---|-------------|----|---|---|
| Stranger    | 3  | 1 | 1 | J. Phillips | 1  | 2 | 1 |
| Belus       | 3  | 0 | 0 | Marion      | 3  | 2 | 2 |
| Nordstrom   | 3  | 1 | 0 | Kievitt     | 2  | 1 | 0 |
| R. Phillips | 3  | 1 | 1 | Zuker       | 1  | 0 | 0 |
| Schuyler    | 3  | 0 | 0 | Gupezzano   | 1  | 0 | 0 |
| Edwards     | 3  | 0 | 0 | Trainer     | 1  | 2 | 0 |
| Pinnegan    | 2  | 0 | 0 | Hudson      | 2  | 0 | 0 |
| Belle       | 2  | 0 | 0 | Sullivan    | 1  | 1 | 1 |
| Peterson    | 2  | 0 | 0 | Bosco       | 3  | 0 | 1 |
|             |    |   |   | Phansen     | 0  | 0 | 0 |
|             |    |   |   | Cafone      | 1  | 1 | 1 |
|             |    |   |   | Cullen      | 1  | 0 | 0 |

## WE "WOOD" SERVE YOU BEST SPRING! and Time To Install Screens



Screen Doors  
Combination Screen and Storm Doors  
Ready-made and Screen Stock

Make Your Home Insect Proof  
Take an inventory of your Screens today... Are they frames torn? ... Is the mesh torn? ... Are they serviceable?  
Bring them up to par before the insect season arrives!

Bloomfield Lumber Co.  
4 Belleville Avenue Bloomfield 2-4500

# Bellboys Belted About By Central And Hillside; Fielding Poor

Play Good Counsel, Harrison And Irvington Vocational During Coming Week

The Bellboys dropped their season average to .500 this week as they were played twice out of three starts. They started well but shaky by tweeking Good Counsel's nose 4-3 Friday, followed on Monday by their poorest display of the year, 7-2 against Hillside, and concluding on Tuesday when they were trimmed 8-6 by Newark Central.

The week also saw their fielding averages take a power dive. They just pulled out of it in time for Central. All told eleven blunders went in the books against them in the two other games, almost three times as many as the first three contests combined. The week also saw the second one-hitter turned in against them this year. Harry Rab of Hillside duplicated the feat of South Side's Yukuus.

The coming schedule lists three games they should win, one being somewhat of a breather, the other two having been beaten previously this year. Good Counsel is on the menu for tomorrow at Branch Brook Park Extension, Irvington Vocational Monday at Irvington and Harrison Tuesday at Clearman Field. All games are scheduled for 3:30.

Lose To Central  
The Zebras started slapping

Central's Repecky around in the fifth inning Tuesday and eventually knocked him out of the box. The only catch was that the Blue and Gold had gotten themselves into a 7-0 hole before they started to go anywhere. The way it ended up Belleville outhit the visitors 11-10, outfielded them one error to three, but missed outscoring them 6-8.

Repecky practically put the game on ice in the third with a round-tripper with one mate on board. That made it 5-0 and, with the two more put over in the fifth, the game was won. Belleville pounced on Repecky in the latter half of that frame, he blew up more in the sixth and by the time the seventh was under way the Central board-of-strategy decided Mr. Repecky looked better inside a shower curtain.

Jud Miller was the slugging surprise of the afternoon, lacing out two long doubles. Joe Sullivan also hit a two-bagger and, as usual, led in the runs-batted-in department.

Belleville High never stopped to look the gift horse in the mouth. It just took the present and called it a day — a day plenty full of scares and hair-raising plays. Good Counsel handed the Blue and Gold a 4-3 decision despite, as Frank Smith put it, the fact that "we did everything we could to give them the game."

Hillside Hurler Allows Zebras Only One Hit In Winning Game 7-2

| Belleville                  | ab | r | h | Central  | ab | r | h |
|-----------------------------|----|---|---|----------|----|---|---|
| Litts                       | 5  | 1 | 1 | Rosio    | 3  | 0 | 1 |
| Piccolino                   | 5  | 2 | 0 | Zollare  | 5  | 0 | 2 |
| Sullivan                    | 5  | 1 | 2 | Killias  | 5  | 0 | 0 |
| Vander                      | 4  | 0 | 1 | Danbert  | 5  | 1 | 1 |
| Handley                     | 4  | 0 | 2 | Paradise | 5  | 2 | 0 |
| Calichio                    | 4  | 1 | 2 | Werweky  | 4  | 2 | 2 |
| Burns                       | 4  | 1 | 1 | Morisco  | 4  | 2 | 0 |
| Friedrich                   | 4  | 0 | 0 | B. Forte | 4  | 0 | 0 |
| Miller                      | 2  | 4 | 1 | Repecky  | 2  | 1 | 1 |
| a-Batted for Miller in 9th. |    |   |   | a-Scott  | 1  | 1 | 1 |
| b-Cafone                    | 1  | 0 | 0 |          |    |   |   |

|              |    |   |    |                 |      |     |    |
|--------------|----|---|----|-----------------|------|-----|----|
|              | 37 | 6 | 11 |                 | 36   | 8   | 10 |
| a-Batted for |    |   |    | Litts in 9th.   |      |     |    |
| b-Batted for |    |   |    | Avazian in 9th. |      |     |    |
| Good Counsel |    |   |    | .002            | .020 | 010 | —  |
| Belleville   |    |   |    | .000            | .001 | 101 | —  |
| Belleville   | ab | r | h  | G. Counsel      | ab   | r   | h  |
| Litts        | 4  | 0 | 0  | D. Miller       | 4    | 1   | 2  |
| Piccolino,ss | 3  | 1 | 0  | O'Connor,2b     | 4    | 0   | 1  |
| Sullivan,c   | 2  | 1 | 2  | Dempsey,        | 4    | 1   | 2  |
| Handley,1b   | 4  | 0 | 1  | Wood,           | 4    | 1   | 1  |
| McFott,p     | 4  | 1 | 0  | B. Forte,       | 5    | 1   | 2  |
| Calichio,r   | 2  | 2 | 0  | DeProzio,rf     | 4    | 0   | 0  |
| Friedrich,3b | 3  | 0 | 1  | H. Rab,         | 5    | 1   | 1  |
| Burns,lf     | 3  | 0 | 0  | Kochan,         | 4    | 0   | 0  |
| J. Miller,2b | 3  | 0 | 0  | Morris,         | 2    | 4   | 0  |
| *Avazian     | 1  | 0 | 0  | Steward,2b      | 4    | 0   | 0  |
|              |    |   |    |                 |      |     |    |
|              |    |   |    |                 |      |     |    |
|              |    |   |    |                 |      |     |    |
|              |    |   |    |                 |      |     |    |
|              |    |   |    |                 |      |     |    |
|              |    |   |    |                 |      |     |    |
|              |    |   |    |                 |      |     |    |
|              |    |   |    |                 |      |     |    |
|              |    |   |    |                 |      |     |    |
|              |    |   |    |                 |      |     |    |
|              |    |   |    |                 |      |     |    |
|              |    |   |    |                 |      |     |    |
|              |    |   |    |                 |      |     |    |
|              |    |   |    |                 |      |     |    |
|              |    |   |    |                 |      |     |    |
|              |    |   |    |                 |      |     |    |
|              |    |   |    |                 |      |     |    |
|              |    |   |    |                 |      |     |    |
|              |    |   |    |                 |      |     |    |
|              |    |   |    |                 |      |     |    |
|              |    |   |    |                 |      |     |    |
|              |    |   |    |                 |      |     |    |
|              |    |   |    |                 |      |     |    |
|              |    |   |    |                 |      |     |    |
|              |    |   |    |                 |      |     |    |
|              |    |   |    |                 |      |     |    |
|              |    |   |    |                 |      |     |    |
|              |    |   |    |                 |      |     |    |
|              |    |   |    |                 |      |     |    |
|              |    |   |    |                 |      |     |    |
|              |    |   |    |                 |      |     |    |
|              |    |   |    |                 |      |     |    |
|              |    |   |    |                 |      |     |    |
|              |    |   |    |                 |      |     |    |
|              |    |   |    |                 |      |     |    |
|              |    |   |    |                 |      |     |    |
|              |    |   |    |                 |      |     |    |
|              |    |   |    |                 |      |     |    |
|              |    |   |    |                 |      |     |    |
|              |    |   |    |                 |      |     |    |
|              |    |   |    |                 |      |     |    |
|              |    |   |    |                 |      |     |    |
|              |    |   |    |                 |      |     |    |
|              |    |   |    |                 |      |     |    |
|              |    |   |    |                 |      |     |    |
|              |    |   |    |                 |      |     |    |
|              |    |   |    |                 |      |     |    |
|              |    |   |    |                 |      |     |    |
|              |    |   |    |                 |      |     |    |
|              |    |   |    |                 |      |     |    |
|              |    |   |    |                 |      |     |    |
|              |    |   |    |                 |      |     |    |
|              |    |   |    |                 |      |     |    |
|              |    |   |    |                 |      |     |    |
|              |    |   |    |                 |      |     |    |
|              |    |   |    |                 |      |     |    |
|              |    |   |    |                 |      |     |    |
|              |    |   |    |                 |      |     |    |
|              |    |   |    |                 |      |     |    |
|              |    |   |    |                 |      |     |    |
|              |    |   |    |                 |      |     |    |
|              |    |   |    |                 |      |     |    |
|              |    |   |    |                 |      |     |    |
|              |    |   |    |                 |      |     |    |
|              |    |   |    |                 |      |     |    |
|              |    |   |    |                 |      |     |    |
|              |    |   |    |                 |      |     |    |
|              |    |   |    |                 |      |     |    |
|              |    |   |    |                 |      |     |    |
|              |    |   |    |                 |      |     |    |
|              |    |   |    |                 |      |     |    |
|              |    |   |    |                 |      |     |    |
|              |    |   |    |                 |      |     |    |
|              |    |   |    |                 |      |     |    |
|              |    |   |    |                 |      |     |    |
|              |    |   |    |                 |      |     |    |
|              |    |   |    |                 |      |     |    |
|              |    |   |    |                 |      |     |    |
|              |    |   |    |                 |      |     |    |
|              |    |   |    |                 |      |     |    |
|              |    |   |    |                 |      |     |    |
|              |    |   |    |                 |      |     |    |
|              |    |   |    |                 |      |     |    |
|              |    |   |    |                 |      |     |    |
|              |    |   |    |                 |      |     |    |
|              |    |   |    |                 |      |     |    |
|              |    |   |    |                 |      |     |    |
|              |    |   |    |                 |      |     |    |
|              |    |   |    |                 |      |     |    |
|              |    |   |    |                 |      |     |    |
|              |    |   |    |                 |      |     |    |
|              |    |   |    |                 |      |     |    |
|              |    |   |    |                 |      |     |    |
|              |    |   |    |                 |      |     |    |
|              |    |   |    |                 |      |     |    |
|              |    |   |    |                 |      |     |    |
|              |    |   |    |                 |      |     |    |
|              |    |   |    |                 |      |     |    |
|              |    |   |    |                 |      |     |    |
|              |    |   |    |                 |      |     |    |
|              |    |   |    |                 |      |     |    |
|              |    |   |    |                 |      |     |    |
|              |    |   |    |                 |      |     |    |
|              |    |   |    |                 |      |     |    |
|              |    |   |    |                 |      |     |    |
|              |    |   |    |                 |      |     |    |
|              |    |   |    |                 |      |     |    |
|              |    |   |    |                 |      |     |    |
|              |    |   |    |                 |      |     |    |
|              |    |   |    |                 |      |     |    |
|              |    |   |    |                 |      |     |    |
|              |    |   |    |                 |      |     |    |
|              |    |   |    |                 |      |     |    |
|              |    |   |    |                 |      |     |    |
|              |    |   |    |                 |      |     |    |
|              |    |   |    |                 |      |     |    |
|              |    |   |    |                 |      |     |    |
|              |    |   |    |                 |      |     |    |
|              |    |   |    |                 |      |     |    |
|              |    |   |    |                 |      |     |    |
|              |    |   |    |                 |      |     |    |
|              |    |   |    |                 |      |     |    |
|              |    |   |    |                 |      |     |    |
|              |    |   |    |                 |      |     |    |
|              |    |   |    |                 |      |     |    |
|              |    |   |    |                 |      |     |    |
|              |    |   |    |                 |      |     |    |
|              |    |   |    |                 |      |     |    |
|              |    |   |    |                 |      |     |    |
|              |    |   |    |                 |      |     |    |
|              |    |   |    |                 |      |     |    |
|              | </ |   |    |                 |      |     |    |

|                           |  |  |  |  |  |  |  |  |  |  |  |  |  |  |  |  |  |  |  |  |  |  |  |  |  |  |  |  |  |  |  |  |  |  |  |  |  |  |  |  |  |  |  |  |  |  |  |  |  |  |  |  |  |  |  |  |  |  |  |  |  |  |  |  |  |  |  |  |  |  |  |  |  |  |  |  |  |  |  |  |  |  |  |  |  |  |  |  |  |  |  |  |  |  |  |  |  |  |  |  |  |  |  |  |  |  |  |  |  |  |  |  |  |  |  |  |  |  |  |  |  |  |  |  |  |  |  |  |  |  |  |  |  |  |  |  |  |  |  |  |  |  |  |  |  |  |  |  |  |  |  |  |  |  |  |  |  |  |  |  |  |  |  |  |  |  |  |  |  |  |  |  |  |  |  |  |  |  |  |  |  |  |  |  |  |  |  |  |  |  |  |  |  |  |  |  |  |  |  |  |  |  |  |  |  |  |  |  |  |  |  |  |  |  |  |  |  |  |  |  |  |  |  |  |  |  |  |  |  |  |  |  |  |  |  |  |  |  |  |  |  |  |  |  |  |  |  |  |  |  |  |  |  |  |  |  |  |  |  |  |  |  |  |  |  |  |  |  |  |  |  |  |  |  |  |  |  |  |  |  |  |  |  |  |  |  |  |  |  |  |  |  |  |  |  |  |  |  |  |  |  |  |  |  |  |  |  |  |  |  |  |  |  |  |  |  |  |  |  |  |  |  |  |  |  |  |  |  |  |  |  |  |  |  |  |  |  |  |  |  |  |  |  |  |  |  |  |  |  |  |  |  |  |  |  |  |  |  |  |  |  |  |  |  |  |  |  |  |  |  |  |  |  |  |  |  |  |  |  |  |  |  |  |  |  |  |  |  |  |  |  |  |  |  |  |  |  |  |  |  |  |  |  |  |  |  |  |  |  |  |  |  |  |  |  |  |  |  |  |  |  |  |  |  |  |  |  |  |  |  |  |  |  |  |  |  |  |  |  |  |  |  |  |  |  |  |  |  |  |  |  |  |  |  |  |  |  |  |  |  |  |  |  |  |  |  |  |  |  |  |  |  |  |  |  |  |  |  |  |  |  |  |  |  |  |  |  |  |  |  |  |  |  |  |  |  |  |  |  |  |  |  |  |  |  |  |  |  |  |  |  |  |  |  |  |  |  |  |  |  |  |  |  |  |  |  |  |  |  |  |  |  |  |  |  |  |  |  |  |  |  |  |  |  |  |  |  |  |  |  |  |  |  |  |  |  |  |  |  |  |  |  |  |  |  |  |  |  |  |  |  |  |  |  |  |  |  |  |  |  |  |  |  |  |  |  |  |  |  |  |  |  |  |  |  |  |  |  |  |  |  |  |  |  |  |  |  |  |  |  |  |  |  |  |  |  |  |  |  |  |  |  |  |  |  |  |  |  |  |  |  |  |  |  |  |  |  |  |  |  |  |  |  |  |  |  |  |  |  |  |  |  |  |  |  |  |  |  |  |  |  |  |  |  |  |  |  |  |  |  |  |  |  |  |  |  |  |  |  |  |  |  |  |  |  |  |  |  |  |  |  |  |  |  |  |  |  |  |  |  |  |  |  |  |  |  |  |  |  |  |  |  |  |  |  |  |  |  |  |  |  |  |  |  |  |  |  |  |  |  |  |  |  |  |  |  |  |  |  |  |  |  |  |  |  |  |  |  |  |  |  |  |  |  |  |  |  |  |  |  |  |  |  |  |  |  |  |  |  |  |  |  |  |  |  |  |  |  |  |  |  |  |  |  |  |  |  |  |  |  |  |  |  |  |  |  |  |  |  |  |  |  |  |  |  |  |  |  |  |  |  |  |  |  |  |  |  |  |  |  |  |  |  |  |  |  |  |  |  |  |  |  |  |  |  |  |  |  |  |  |  |  |  |  |  |  |  |  |  |  |  |  |  |  |  |  |  |  |  |  |  |  |  |  |  |  |  |  |  |  |  |  |  |  |  |  |  |  |  |  |  |  |  |  |  |  |  |  |  |  |  |  |  |  |  |  |  |  |  |  |  |  |  |  |  |  |  |  |  |  |  |  |  |  |  |  |  |  |  |  |  |  |  |  |  |  |  |  |  |  |  |  |  |  |  |  |  |  |  |  |  |  |  |  |  |  |  |  |  |  |  |  |  |  |  |  |  |  |  |  |  |  |  |  |  |  |  |  |  |  |  |  |  |  |  |  |  |  |  |  |  |  |  |  |  |  |  |  |  |  |  |  |  |  |  |  |  |  |  |  |  |  |  |  |  |  |  |  |  |  |  |  |  |  |  |  |  |  |  |  |  |  |  |  |  |  |  |  |  |  |  |  |  |  |  |  |  |  |  |  |  |  |  |  |  |  |  |  |  |  |  |  |  |  |  |  |  |  |  |  |  |  |  |  |  |  |  |  |  |  |  |  |  |  |  |  |  |  |  |  |  |  |  |  |  |  |  |  |  |  |  |  |  |  |  |  |  |  |  |  |  |  |  |  |  |  |  |  |  |  |  |  |  |  |  |  |  |  |  |  |  |  |  |  |  |  |  |  |  |  |  |  |  |  |  |  |  |  |  |  |  |  |  |  |  |  |  |  |  |  |  |  |  |  |  |  |  |  |  |  |  |  |  |  |  |  |  |  |  |  |  |  |  |  |  |  |  |  |  |  |  |  |  |  |  |  |  |  |  |  |  |  |  |  |  |  |  |  |  |  |  |  |  |  |  |  |  |  |  |  |  |  |  |  |  |  |  |  |  |  |  |  |  |  |  |  |  |  |  |  |  |  |  |  |  |  |  |  |  |  |  |  |  |  |  |  |  |  |  |  |  |  |  |  |  |  |  |  |  |  |  |  |  |  |  |  |  |  |  |  |  |  |  |  |  |  |  |  |  |  |  |  |  |  |  |  |  |  |  |  |  |  |  |  |  |  |  |  |  |  |  |  |  |  |  |  |  |  |  |  |  |  |  |  |  |  |  |  |  |  |  |  |  |  |  |  |  |  |  |  |  |  |  |  |  |  |  |  |  |  |  |  |  |  |  |  |  |  |  |  |  |  |  |  |  |  |  |  |  |  |  |  |
|---------------------------|--|--|--|--|--|--|--|--|--|--|--|--|--|--|--|--|--|--|--|--|--|--|--|--|--|--|--|--|--|--|--|--|--|--|--|--|--|--|--|--|--|--|--|--|--|--|--|--|--|--|--|--|--|--|--|--|--|--|--|--|--|--|--|--|--|--|--|--|--|--|--|--|--|--|--|--|--|--|--|--|--|--|--|--|--|--|--|--|--|--|--|--|--|--|--|--|--|--|--|--|--|--|--|--|--|--|--|--|--|--|--|--|--|--|--|--|--|--|--|--|--|--|--|--|--|--|--|--|--|--|--|--|--|--|--|--|--|--|--|--|--|--|--|--|--|--|--|--|--|--|--|--|--|--|--|--|--|--|--|--|--|--|--|--|--|--|--|--|--|--|--|--|--|--|--|--|--|--|--|--|--|--|--|--|--|--|--|--|--|--|--|--|--|--|--|--|--|--|--|--|--|--|--|--|--|--|--|--|--|--|--|--|--|--|--|--|--|--|--|--|--|--|--|--|--|--|--|--|--|--|--|--|--|--|--|--|--|--|--|--|--|--|--|--|--|--|--|--|--|--|--|--|--|--|--|--|--|--|--|--|--|--|--|--|--|--|--|--|--|--|--|--|--|--|--|--|--|--|--|--|--|--|--|--|--|--|--|--|--|--|--|--|--|--|--|--|--|--|--|--|--|--|--|--|--|--|--|--|--|--|--|--|--|--|--|--|--|--|--|--|--|--|--|--|--|--|--|--|--|--|--|--|--|--|--|--|--|--|--|--|--|--|--|--|--|--|--|--|--|--|--|--|--|--|--|--|--|--|--|--|--|--|--|--|--|--|--|--|--|--|--|--|--|--|--|--|--|--|--|--|--|--|--|--|--|--|--|--|--|--|--|--|--|--|--|--|--|--|--|--|--|--|--|--|--|--|--|--|--|--|--|--|--|--|--|--|--|--|--|--|--|--|--|--|--|--|--|--|--|--|--|--|--|--|--|--|--|--|--|--|--|--|--|--|--|--|--|--|--|--|--|--|--|--|--|--|--|--|--|--|--|--|--|--|--|--|--|--|--|--|--|--|--|--|--|--|--|--|--|--|--|--|--|--|--|--|--|--|--|--|--|--|--|--|--|--|--|--|--|--|--|--|--|--|--|--|--|--|--|--|--|--|--|--|--|--|--|--|--|--|--|--|--|--|--|--|--|--|--|--|--|--|--|--|--|--|--|--|--|--|--|--|--|--|--|--|--|--|--|--|--|--|--|--|--|--|--|--|--|--|--|--|--|--|--|--|--|--|--|--|--|--|--|--|--|--|--|--|--|--|--|--|--|--|--|--|--|--|--|--|--|--|--|--|--|--|--|--|--|--|--|--|--|--|--|--|--|--|--|--|--|--|--|--|--|--|--|--|--|--|--|--|--|--|--|--|--|--|--|--|--|--|--|--|--|--|--|--|--|--|--|--|--|--|--|--|--|--|--|--|--|--|--|--|--|--|--|--|--|--|--|--|--|--|--|--|--|--|--|--|--|--|--|--|--|--|--|--|--|--|--|--|--|--|--|--|--|--|--|--|--|--|--|--|--|--|--|--|--|--|--|--|--|--|--|--|--|--|--|--|--|--|--|--|--|--|--|--|--|--|--|--|--|--|--|--|--|--|--|--|--|--|--|--|--|--|--|--|--|--|--|--|--|--|--|--|--|--|--|--|--|--|--|--|--|--|--|--|--|--|--|--|--|--|--|--|--|--|--|--|--|--|--|--|--|--|--|--|--|--|--|--|--|--|--|--|--|--|--|--|--|--|--|--|--|--|--|--|--|--|--|--|--|--|--|--|--|--|--|--|--|--|--|--|--|--|--|--|--|--|--|--|--|--|--|--|--|--|--|--|--|--|--|--|--|--|--|--|--|--|--|--|--|--|--|--|--|--|--|--|--|--|--|--|--|--|--|--|--|--|--|--|--|--|--|--|--|--|--|--|--|--|--|--|--|--|--|--|--|--|--|--|--|--|--|--|--|--|--|--|--|--|--|--|--|--|--|--|--|--|--|--|--|--|--|--|--|--|--|--|--|--|--|--|--|--|--|--|--|--|--|--|--|--|--|--|--|--|--|--|--|--|--|--|--|--|--|--|--|--|--|--|--|--|--|--|--|--|--|--|--|--|--|--|--|--|--|--|--|--|--|--|--|--|--|--|--|--|--|--|--|--|--|--|--|--|--|--|--|--|--|--|--|--|--|--|--|--|--|--|--|--|--|--|--|--|--|--|--|--|--|--|--|--|--|--|--|--|--|--|--|--|--|--|--|--|--|--|--|--|--|--|--|--|--|--|--|--|--|--|--|--|--|--|--|--|--|--|--|--|--|--|--|--|--|--|--|--|--|--|--|--|--|--|--|--|--|--|--|--|--|--|--|--|--|--|--|--|--|--|--|--|--|--|--|--|--|--|--|--|--|--|--|--|--|--|--|--|--|--|--|--|--|--|--|--|--|--|--|--|--|--|--|--|--|--|--|--|--|--|--|--|--|--|--|--|--|--|--|--|--|--|--|--|--|--|--|--|--|--|--|--|--|--|--|--|--|--|--|--|--|--|--|--|--|--|--|--|--|--|--|--|--|--|--|--|--|--|--|--|--|--|--|--|--|--|--|--|--|--|--|--|--|--|--|--|--|--|--|--|--|--|--|--|--|--|--|--|--|--|--|--|--|--|--|--|--|--|--|--|--|--|--|--|--|--|--|--|--|--|--|--|--|--|--|--|--|--|--|--|--|--|--|--|--|--|--|--|--|--|--|--|--|--|--|--|--|--|--|--|--|--|--|--|--|--|--|--|--|--|--|--|--|--|--|--|--|--|--|--|--|--|--|--|--|--|--|--|--|--|--|--|--|--|--|--|--|--|--|--|--|--|--|--|--|--|--|--|--|--|--|--|--|--|--|--|--|--|--|--|--|--|--|--|--|--|--|--|--|--|--|--|--|--|--|--|--|--|--|--|--|--|--|--|--|--|--|--|--|--|--|--|--|--|--|--|--|--|--|--|--|--|--|--|--|--|--|--|--|--|--|--|--|--|--|--|--|--|--|--|--|--|
| Batted for Miller in 9th. |  |  |  |  |  |  |  |  |  |  |  |  |  |  |  |  |  |  |  |  |  |  |  |  |  |  |  |  |  |  |  |  |  |  |  |  |  |  |  |  |  |  |  |  |  |  |  |  |  |  |  |  |  |  |  |  |  |  |  |  |  |  |  |  |  |  |  |  |  |  |  |  |  |  |  |  |  |  |  |  |  |  |  |  |  |  |  |  |  |  |  |  |  |  |  |  |  |  |  |  |  |  |  |  |  |  |  |  |  |  |  |  |  |  |  |  |  |  |  |  |  |  |  |  |  |  |  |  |  |  |  |  |  |  |  |  |  |  |  |  |  |  |  |  |  |  |  |  |  |  |  |  |  |  |  |  |  |  |  |  |  |  |  |  |  |  |  |  |  |  |  |  |  |  |  |  |  |  |  |  |  |  |  |  |  |  |  |  |  |  |  |  |  |  |  |  |  |  |  |  |  |  |  |  |  |  |  |  |  |  |  |  |  |  |  |  |  |  |  |  |  |  |  |  |  |  |  |  |  |  |  |  |  |  |  |  |  |  |  |  |  |  |  |  |  |  |  |  |  |  |  |  |  |  |  |  |  |  |  |  |  |  |  |  |  |  |  |  |  |  |  |  |  |  |  |  |  |  |  |  |  |  |  |  |  |  |  |  |  |  |  |  |  |  |  |  |  |  |  |  |  |  |  |  |  |  |  |  |  |  |  |  |  |  |  |  |  |  |  |  |  |  |  |  |  |  |  |  |  |  |  |  |  |  |  |  |  |  |  |  |  |  |  |  |  |  |  |  |  |  |  |  |  |  |  |  |  |  |  |  |  |  |  |  |  |  |  |  |  |  |  |  |  |  |  |  |  |  |  |  |  |  |  |  |  |  |  |  |  |  |  |  |  |  |  |  |  |  |  |  |  |  |  |  |  |  |  |  |  |  |  |  |  |  |  |  |  |  |  |  |  |  |  |  |  |  |  |  |  |  |  |  |  |  |  |  |  |  |  |  |  |  |  |  |  |  |  |  |  |  |  |  |  |  |  |  |  |  |  |  |  |  |  |  |  |  |  |  |  |  |  |  |  |  |  |  |  |  |  |  |  |  |  |  |  |  |  |  |  |  |  |  |  |  |  |  |  |  |  |  |  |  |  |  |  |  |  |  |  |  |  |  |  |  |  |  |  |  |  |  |  |  |  |  |  |  |  |  |  |  |  |  |  |  |  |  |  |  |  |  |  |  |  |  |  |  |  |  |  |  |  |  |  |  |  |  |  |  |  |  |  |  |  |  |  |  |  |  |  |  |  |  |  |  |  |  |  |  |  |  |  |  |  |  |  |  |  |  |  |  |  |  |  |  |  |  |  |  |  |  |  |  |  |  |  |  |  |  |  |  |  |  |  |  |  |  |  |  |  |  |  |  |  |  |  |  |  |  |  |  |  |  |  |  |  |  |  |  |  |  |  |  |  |  |  |  |  |  |  |  |  |  |  |  |  |  |  |  |  |  |  |  |  |  |  |  |  |  |  |  |  |  |  |  |  |  |  |  |  |  |  |  |  |  |  |  |  |  |  |  |  |  |  |  |  |  |  |  |  |  |  |  |  |  |  |  |  |  |  |  |  |  |  |  |  |  |  |  |  |  |  |  |  |  |  |  |  |  |  |  |  |  |  |  |  |  |  |  |  |  |  |  |  |  |  |  |  |  |  |  |  |  |  |  |  |  |  |  |  |  |  |  |  |  |  |  |  |  |  |  |  |  |  |  |  |  |  |  |  |  |  |  |  |  |  |  |  |  |  |  |  |  |  |  |  |  |  |  |  |  |  |  |  |  |  |  |  |  |  |  |  |  |  |  |  |  |  |  |  |  |  |  |  |  |  |  |  |  |  |  |  |  |  |  |  |  |  |  |  |  |  |  |  |  |  |  |  |  |  |  |  |  |  |  |  |  |  |  |  |  |  |  |  |  |  |  |  |  |  |  |  |  |  |  |  |  |  |  |  |  |  |  |  |  |  |  |  |  |  |  |  |  |  |  |  |  |  |  |  |  |  |  |  |  |  |  |  |  |  |  |  |  |  |  |  |  |  |  |  |  |  |  |  |  |  |  |  |  |  |  |  |  |  |  |  |  |  |  |  |  |  |  |  |  |  |  |  |  |  |  |  |  |  |  |  |  |  |  |  |  |  |  |  |  |  |  |  |  |  |  |  |  |  |  |  |  |  |  |  |  |  |  |  |  |  |  |  |  |  |  |  |  |  |  |  |  |  |  |  |  |  |  |  |  |  |  |  |  |  |  |  |  |  |  |  |  |  |  |  |  |  |  |  |  |  |  |  |  |  |  |  |  |  |  |  |  |  |  |  |  |  |  |  |  |  |  |  |  |  |  |  |  |  |  |  |  |  |  |  |  |  |  |  |  |  |  |  |  |  |  |  |  |  |  |  |  |  |  |  |  |  |  |  |  |  |  |  |  |  |  |  |  |  |  |  |  |  |  |  |  |  |  |  |  |  |  |  |  |  |  |  |  |  |  |  |  |  |  |  |  |  |  |  |  |  |  |  |  |  |  |  |  |  |  |  |  |  |  |  |  |  |  |  |  |  |  |  |  |  |  |  |  |  |  |  |  |  |  |  |  |  |  |  |  |  |  |  |  |  |  |  |  |  |  |  |  |  |  |  |  |  |  |  |  |  |  |  |  |  |  |  |  |  |  |  |  |  |  |  |  |  |  |  |  |  |  |  |  |  |  |  |  |  |  |  |  |  |  |  |  |  |  |  |  |  |  |  |  |  |  |  |  |  |  |  |  |  |  |  |  |  |  |  |  |  |  |  |  |  |  |  |  |  |  |  |  |  |  |  |  |  |  |  |  |  |  |  |  |  |  |  |  |  |  |  |  |  |  |  |  |  |  |  |  |  |  |  |  |  |  |  |  |  |  |  |  |  |  |  |  |  |  |  |  |  |  |  |  |  |  |  |  |  |  |  |  |  |  |  |  |  |  |  |  |  |  |  |  |  |  |  |  |  |  |  |  |  |  |  |  |  |  |  |  |  |  |  |  |  |  |  |  |  |  |  |  |  |  |  |  |  |  |
|---------------------------|--|--|--|--|--|--|--|--|--|--|--|--|--|--|--|--|--|--|--|--|--|--|--|--|--|--|--|--|--|--|--|--|--|--|--|--|--|--|--|--|--|--|--|--|--|--|--|--|--|--|--|--|--|--|--|--|--|--|--|--|--|--|--|--|--|--|--|--|--|--|--|--|--|--|--|--|--|--|--|--|--|--|--|--|--|--|--|--|--|--|--|--|--|--|--|--|--|--|--|--|--|--|--|--|--|--|--|--|--|--|--|--|--|--|--|--|--|--|--|--|--|--|--|--|--|--|--|--|--|--|--|--|--|--|--|--|--|--|--|--|--|--|--|--|--|--|--|--|--|--|--|--|--|--|--|--|--|--|--|--|--|--|--|--|--|--|--|--|--|--|--|--|--|--|--|--|--|--|--|--|--|--|--|--|--|--|--|--|--|--|--|--|--|--|--|--|--|--|--|--|--|--|--|--|--|--|--|--|--|--|--|--|--|--|--|--|--|--|--|--|--|--|--|--|--|--|--|--|--|--|--|--|--|--|--|--|--|--|--|--|--|--|--|--|--|--|--|--|--|--|--|--|--|--|--|--|--|--|--|--|--|--|--|--|--|--|--|--|--|--|--|--|--|--|--|--|--|--|--|--|--|--|--|--|--|--|--|--|--|--|--|--|--|--|--|--|--|--|--|--|--|--|--|--|--|--|--|--|--|--|--|--|--|--|--|--|--|--|--|--|--|--|--|--|--|--|--|--|--|--|--|--|--|--|--|--|--|--|--|--|--|--|--|--|--|--|--|--|--|--|--|--|--|--|--|--|--|--|--|--|--|--|--|--|--|--|--|--|--|--|--|--|--|--|--|--|--|--|--|--|--|--|--|--|--|--|--|--|--|--|--|--|--|--|--|--|--|--|--|--|--|--|--|--|--|--|--|--|--|--|--|--|--|--|--|--|--|--|--|--|--|--|--|--|--|--|--|--|--|--|--|--|--|--|--|--|--|--|--|--|--|--|--|--|--|--|--|--|--|--|--|--|--|--|--|--|--|--|--|--|--|--|--|--|--|--|--|--|--|--|--|--|--|--|--|--|--|--|--|--|--|--|--|--|--|--|--|--|--|--|--|--|--|--|--|--|--|--|--|--|--|--|--|--|--|--|--|--|--|--|--|--|--|--|--|--|--|--|--|--|--|--|--|--|--|--|--|--|--|--|--|--|--|--|--|--|--|--|--|--|--|--|--|--|--|--|--|--|--|--|--|--|--|--|--|--|--|--|--|--|--|--|--|--|--|--|--|--|--|--|--|--|--|--|--|--|--|--|--|--|--|--|--|--|--|--|--|--|--|--|--|--|--|--|--|--|--|--|--|--|--|--|--|--|--|--|--|--|--|--|--|--|--|--|--|--|--|--|--|--|--|--|--|--|--|--|--|--|--|--|--|--|--|--|--|--|--|--|--|--|--|--|--|--|--|--|--|--|--|--|--|--|--|--|--|--|--|--|--|--|--|--|--|--|--|--|--|--|--|--|--|--|--|--|--|--|--|--|--|--|--|--|--|--|--|--|--|--|--|--|--|--|--|--|--|--|--|--|--|--|--|--|--|--|--|--|--|--|--|--|--|--|--|--|--|--|--|--|--|--|--|--|--|--|--|--|--|--|--|--|--|--|--|--|--|--|--|--|--|--|--|--|--|--|--|--|--|--|--|--|--|--|--|--|--|--|--|--|--|--|--|--|--|--|--|--|--|--|--|--|--|--|--|--|--|--|--|--|--|--|--|--|--|--|--|--|--|--|--|--|--|--|--|--|--|--|--|--|--|--|--|--|--|--|--|--|--|--|--|--|--|--|--|--|--|--|--|--|--|--|--|--|--|--|--|--|--|--|--|--|--|--|--|--|--|--|--|--|--|--|--|--|--|--|--|--|--|--|--|--|--|--|--|--|--|--|--|--|--|--|--|--|--|--|--|--|--|--|--|--|--|--|--|--|--|--|--|--|--|--|--|--|--|--|--|--|--|--|--|--|--|--|--|--|--|--|--|--|--|--|--|--|--|--|--|--|--|--|--|--|--|--|--|--|--|--|--|--|--|--|--|--|--|--|--|--|--|--|--|--|--|--|--|--|--|--|--|--|--|--|--|--|--|--|--|--|--|--|--|--|--|--|--|--|--|--|--|--|--|--|--|--|--|--|--|--|--|--|--|--|--|--|--|--|--|--|--|--|--|--|--|--|--|--|--|--|--|--|--|--|--|--|--|--|--|--|--|--|--|--|--|--|--|--|--|--|--|--|--|--|--|--|--|--|--|--|--|--|--|--|--|--|--|--|--|--|--|--|--|--|--|--|--|--|--|--|--|--|--|--|--|--|--|--|--|--|--|--|--|--|--|--|--|--|--|--|--|--|--|--|--|--|--|--|--|--|--|--|--|--|--|--|--|--|--|--|--|--|--|--|--|--|--|--|--|--|--|--|--|--|--|--|--|--|--|--|--|--|--|--|--|--|--|--|--|--|--|--|--|--|--|--|--|--|--|--|--|--|--|--|--|--|--|--|--|--|--|--|--|--|--|--|--|--|--|--|--|--|--|--|--|--|--|--|--|--|--|--|--|--|--|--|--|--|--|--|--|--|--|--|--|--|--|--|--|--|--|--|--|--|--|--|--|--|--|--|--|--|--|--|--|--|--|--|--|--|--|--|--|--|--|--|--|--|--|--|--|--|--|--|--|--|--|--|--|--|--|--|--|--|--|--|--|--|--|--|--|--|--|--|--|--|--|--|--|--|--|--|--|--|--|--|--|--|--|--|--|--|--|--|--|--|--|--|--|--|--|--|--|--|--|--|--|--|--|--|--|--|--|--|--|--|--|--|--|--|--|--|--|--|--|--|--|--|--|--|--|--|--|--|--|--|--|--|--|--|--|--|--|--|--|--|--|--|--|--|--|--|--|--|--|--|--|--|--|--|--|--|--|--|--|--|--|--|--|--|--|--|--|--|--|--|--|--|--|--|--|--|--|--|--|--|--|--|--|--|--|--|--|--|--|--|--|--|--|--|--|--|--|--|--|--|--|--|--|--|--|--|--|--|--|--|

|                                 |     |     |     |   |    |   |    |
|---------------------------------|-----|-----|-----|---|----|---|----|
|                                 | 25  | 2   | 1   |   | 37 | 7 | 10 |
| a-Batted for Fredericks in 9th. |     |     |     |   |    |   |    |
| b-Batter for Miller in 9th.     |     |     |     |   |    |   |    |
| c-Batted for Litts in 9th.      |     |     |     |   |    |   |    |
| d-Batted for Piccolino in 9th.  |     |     |     |   |    |   |    |
| Hillside .....                  | 101 | 021 | 200 | — | 7  |   |    |
| Belleville .....                | 000 | 100 | 001 | — | 5  |   |    |

### Valley Cards Win 23-11

Whaling the daylight out of the William Smallwood nine, the Valley Street Cardinals avenged a previous 23-19 defeat by licking the tar out of their former conquerors 23-11 in a sub-midget baseball game at Palooka Field Tuesday afternoon.

Only one player on the Cards' roster turned up in the box score with less than three hits. Captain Francis Bean, Douglas Good and Dave Reynolds led the winners' attack with four blows apiece. The teams withdrew from the field at the end of seven innings but will return to the wars Tuesday afternoon.

25 YEARS OF EXPERIENCE IN MUSIC

An Exclusive Musical Service in All It's Branches

HURRY! TAKE ADVANTAGE OF THE LAST FEW DAYS OF OUR 10-DAY SALE ANNOUNCED LAST WEEK

RECORDS, latest hits 33¢ Slightly Used 10¢ and 19¢

SHEET MUSIC, latest 29¢

Electric RECORD PLAYERS \$6.95

PORTABLE PHONO. 7.95

Radio-Phono Comb. 19.75 Regular 29.95

EXTRA SPECIAL Excelsior Accordiana PIANO ACCORDION 120 Basses 2 Shifts Worth \$400.00

NOW 175.00 "DON'T MISS IT"

Accordions Our Specialty We Teach and Sell All Makes

JOIN OUR MODERN MUSIC SCHOOL NOW!

STEPHAN MUSIC CENTER

476 Washington Ave. Belleville Tel. Belleville 2-3307

# BOWLERS' DINNER TO DRAW 300

Factory League Pinners Will Celebrate At Four Towers Saturday Night

Twenty-four teams representing twenty-two firms will be wined and dined Saturday night at the fourth annual banquet of the Belleville Manufacturers' Bowling League Saturday at Four Towers in Route 23 at Cedar Grove. Town Attorney Lawrence E. Keenan will act as toastmaster and will introduce the speakers to more than 300 guests expected to attend. Frank Dailey, manager of the Meadowbrook across the street, will stage the Meadowbrook floor show at the banquet. Jack Dailey's Meadowbrook Orchestra will play for dancing after the dinner.

Officers of the league are acting as the committee in charge of arrangements. They are John Walker of Wallace & Tiernan, president and treasurer; Edward J. Maguire of L. Sonneborn & Sons, vice-president; and William Cullen of Federal Leather, secretary.

# H. S. LINKSMEN WIN FIRST

Seton Hall Golfers Prove Easy Picking For Boys; Molinaro Has 83

The first victory of its young life came last week to the high school golf team. The linksmen trounced Seton Hall Prep by a 15-3 margin on the Valley View course. Molinaro paced the field with a low of 83.

The Bellboy golfers lost a hair-line decision to the Bloomfield linksmen 9½-8½ Monday afternoon on the Broadacres course, Bloomfield. Belleville's Fred De Furia turned in an 82 card for low score of the match. Catherine Fox, Bloomfield's feminine cog in the team, scored a 98 and a win over Nick Caluchio.

| Belleville | Bloomfield |
|------------|------------|
| Molinaro   | 83         |
| DeFuria    | 82         |
| Capiner    | 1          |
| Ratowski   | 1          |
| Caluchio   | 1          |
| Rossi      | 1          |
|            | 5½         |
|            | 9½         |

## Brisk's GULF Station

Cor. Main and Rutgers Streets — Phone Belleville 2-4514

Give Your Car That Spring "Change-Over" Now And Save Money

All These For Only

5 qts. Gulf Pride Motor Oil Flush Motor Change Gear Lubricants

Gulfex Chassis Lubrication Wheel Bearings Repacked Clean Air Filter

4.95

## Don't Go Out of Town To Buy Your Used Car

See the Cars your local Olds Dealer has on hand. All Good Buys — With Down Payments as Low as

1936 Olds 6—4-door sedan 140. 1938 Olds 6—4-door sedan 208.

1937 Olds 6—4-door sedan 175. 1935 Olds 6—4-door sedan 100.

1937 Olds 8—4-door sedan 190. 1938 Pontiac 6—4-door sedan 205.

1937 Chrysler Royal Sedan 170.

BELLEVILLE MOTORS

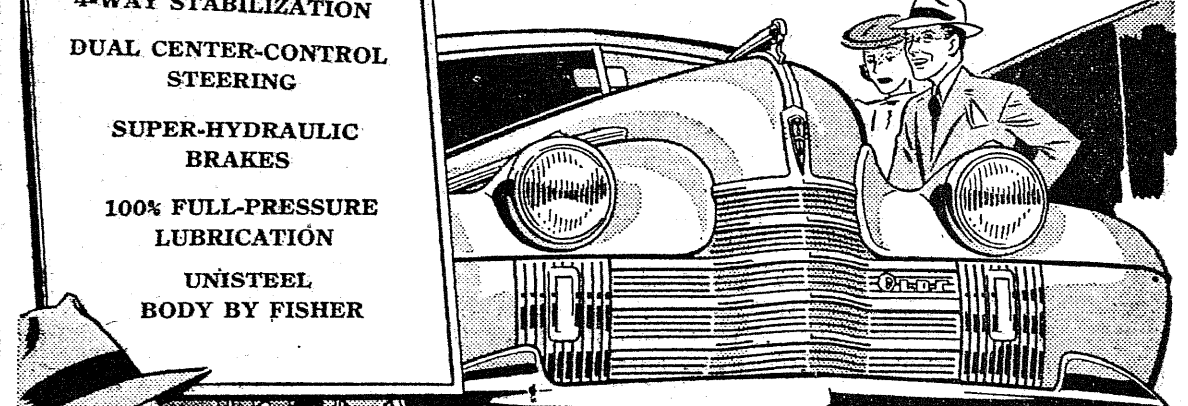
"YOUR OLDSMOBILE DEALER"

33 WASHINGTON AVENUE

Belleville 2-2210 Phones Belleville 2-3310

# "THESE QUALITY FEATURES ALONE

MAKE UP FOR THE SMALL EXTRA COST!"



"JUST A FEW DOLLARS MORE THAN THEY ASK FOR LOWEST PRICED CARS BUY A LOT MORE QUALITY AND A LOT MORE CAR IN OLDSMOBILE!"



# CLASSIFIED ADVERTISEMENTS

Classified Ads for The News may be left at The News Office, 328 Washington Avenue, or telephone BELLEVILLE 2-2747 before 10 A. M. on Wednesdays.

## Free Tickets For The Capitol

Look for your Name — It may be listed among the Classified Ads today — for a Free

### CAPITOL THEATRE GUEST TICKET

If it is here call at the Belleville News Office — 328 Washington Avenue with the ad showing your name.

Now Playing At The Capitol Theatre

Walt Disney's Technicolor Epic  
"PINOCCHIO"

ALSO

George Brent and Isa Miranda  
"ADVENTURES IN DIAMONDS"

#### FOR SALE

ONE FULL SIZE Maple Bed and spring. Practically new. Reasonable. Call Belleville 2-2289-J.

BICYCLE: English Road Wheel. In good condition. Reasonable. Inquire Rathye, 44 Van Houten place.

TWO WELD MARKED Boston Terrier puppies; pedigree; 3 months old. Reasonable. Inspection invited. 64 Hornblower avenue, Belleville between Rutgers and Academy streets.

NUMBER 88 Thatcher coal range with oil burner attachment. Call Saturday. 79 DeWitt avenue. Telephone Belleville 2-1517-J.

PIANO, large upright in good condition. \$10. Baby stroller in good condition. \$3. 59 Campbell avenue.

1937 FORD 60HP Business Coupe. Excellent condition. Good rubber, seat covers, heater. Economical car to run. Sacrifice \$225. Call after 5:30 P.M. 242 Washington avenue, Apartment 1.

6 ROOM HOUSE, garage. Corner property; near schools, buses. \$2700. Sheehan, 78 Stephen street. Belleville 2-3277.

WE HAVE A GUEST PASS for you, Mr. James Lynch of 175 Tappan avenue, from the Capitol Theatre. Will you call at the Belleville News office, 328 Washington avenue for it?

Unusual Opportunity CLOSING an estate. Beautiful corner house, 50x160 plot, opposite golf course. 6 rooms and bath, steam heat, garage. 69 Franklin avenue. 5-16

REUPHOLSTERED living room sets, \$35. up. Dining, bed, breakfast sets, odd tables, chairs, studio couches. Free delivery. Terms. Moving and storage. Roberts, 78 Washington avenue. Belleville 2-3658. 5-2-40 tf

SLIP COVERS FOR 3 piece living room suite. Separate cushion covers. Cretonne. Excellent condition. Reasonable. Also auto tent. 78 High street. Call Belleville 2-3345.

LARGE CRIB COMPLETE with mattress, boys' chiffrone, five drawers. Perfect condition. \$20. Telephone Belleville 2-3207-J.

TWO 19 GALLON CAST aluminum and several smaller aquariums. Charcoal and air-flow water filters. Heaters and stands. Very reasonable. A. Kuhn, 279 Joramoleon street. Call Belleville 2-2651-R. 5-9

WELL rotted cow manure; two cubic yards, \$5. Bonny Dell Farms, Rutherford 2-6109. tf

#### FOR RENT

RENT FROM June 1st. House 7 rooms. 187 Garden avenue. All improvements, garage. Rent \$35. See owner 22 Division avenue or call Belleville 2-3520.

FOUR LIGHT ROOMS and bath; second floor; all improvements; steam heat furnished. Adults only. Quiet location. Convenient to all buses and stores. 17 Washington street.

CORNER STORE; suitable bar, beer shop, any business. Near school. \$15. monthly. Sheehan, 78 Stephen street. Call Belleville 2-3277.

SPACE IS RESERVED for you at the Capitol Theatre, Mr. John Gotschus, 24 Broad street. To get your guest pass please call at The Belleville News office, 328 Washington avenue.

365 MAIN STREET, corner Joramoleon; nine rooms, all improvements, sun porch; suitable two families, six rooms and three; reasonable. 5-9

SPACE AVAILABLE for dances, weddings, socials, meetings, rallies, etc. Facilities for serving food. Veteran's Hall, 17 Belleville avenue. Contact Joseph Schnable at Belleville 2-4513.

APARTMENT: Two front rooms for business lady or couple. Second floor. Heat, hot water, gas, electricity, Frigidaire supplied. 50 New street. Call Belleville 2-2651-J. 5-9

#### PIANO TUNING

J. E. Lay  
Piano Tuner  
Belleville 2-3053  
4-25-40 tf

#### JUNK DEALERS

DEALER in all kinds of junk; iron, paper, metals, tires, tubes, rags, batteries, etc. Used Singer Sewing Machines wanted. J. Resciniti, 36 Clinton street, Belleville 2-2211-W.

#### FURNISHED ROOMS

LARGE, light furnished, room. Near all buses. 23 Belleville avenue. 5-23

FRONT BEDROOM in private home. All improvements. Use of adjoining living room and kitchen. Steam heat, gas and electricity furnished. One block to buses. 25 Berkley avenue. 5-16

ATTRACTIVELY furnished room suitable for business people. Board optional. Pleasant surroundings for summer. Garage. 8 Bell street. Telephone Belleville 2-2115-J. 5-9

LIGHT, CHEERFUL room, south exposure, next to bath. Refined residential neighborhood. Near buses 13, 17, 112, Garden State to Journal Square. 263 Greylock Parkway. 5-9

357 WASHINGTON AVENUE; pleasant front room \$5. Also single room \$3. Convenient to all transportation. 5-9

LARGE FURNISHED room adjoining bath. Southwestern exposure. Private family. Completely modernized home. Unusually convenient to transportation. Gentlemen only. Belleville 2-2035-W. 5-9

VERY LARGE FRONT ROOM, three windows, large closet. Furnished attractively as bedroom-sitting room. Next to bath. Select residential area. Cool location for summer. Large screened porch and pleasant garden. Rossmore place. Call Belleville 2-2475-W. 5-16

FURNISHED ROOM with private family. Light, heat, bath. Free use of phone to 5c zones. Bus passes door. Other lines within three-minute walk. Rent reasonable. Belleville 2-2935-J. 210 Joramoleon street. 2-20-40 tf

LARGE FRONT room, suitable for two. Also small room near bath. Kitchen privileges. Second floor. Minute to buses. Ring top bell. 126 Academy street. 2-15-40 tf

34 FRIEDLAND ROAD off Union avenue, Nutley. Room in modern home, refined neighborhood, use of kitchen. Convenient to buses 13, 74, 112, Garden State. Call Nutley 2-2718-M. 5-23

#### REPAIR WORK

REPAIR YOUR HOME NOW! Electrical work, masonry, painting etc. General contracting. Estimates cheerfully given. No job too small. H. D. Riepe, 84 Wilber street. Call Belleville 2-3066. 5-23

Quality Work—Low Prices Quick Service  
ADAMS SHOE REPAIRING  
7 Overlook Ave.  
Telephone 2-2656  
Shoe Repairing—Hats Cleaned

#### CONTRACTORS

TOP SOIL LANDSCAPING. Repairs to all kinds of cement work. General trucking. C. CORINO  
3 St. Mary's Place Be 2-4693-J.  
4-18-40-tf

WE HAVE contracted for an evening's fun for you, Wilson Cheney of 134 Bremond street. Stop at the Belleville News office, 328 Washington avenue for your Capitol Theatre guest pass. 3207-J. 5-16

#### HELP WANTED

WOMAN, white. For general housework and care of four year old child. No laundry. Sleep in. Mrs. Lee, 99 Fairway avenue.

WE NEED YOUR HELP, Mrs. Frank VanDyk, 46 Oak street, in disposing of a Capitol Theatre guest pass which we are holding for you. Will you call for it at The Belleville News office, 328 Washington avenue?

TWO RELIABLE men to learn business and take orders for nationally known company. Can make \$25 per week to start. Car essential. Apply Box 305, Belleville News Office. 5-16

#### INSTRUCTION

Newark Music Studio  
8 West Park St., Newark, N. J. All instruments taught and sold. All types of dancing also taught. Professional and amateur talent available. "Moonlight Serenaders" orchestra available for dance work. Call Belleville 2-2084-W. 5-9

#### WORK WANTED

WOMAN WOULD LIKE two days a week light housework. Thursday and Friday. Call at 47 Bridge street, second floor.

#### LOST

NOTICE IS HEREBY GIVEN that Pass Book No. 25865 from the Savings Department of The First National Bank of Belleville issued to F. Stefaneli, 277 Ralph street, has been lost and application made for another. Unless returned within two weeks duplicate will be issued. May 9, 1940.

F. C. McFADDEN, Cashier.

AN OPPORTUNITY for pleasure will be lost, Mr. Carl Schreyer of 145 Stephen street if you do not call at the Belleville News office, 328 Washington avenue for the Capitol Theatre guest pass which is waiting for you here.

#### DECORATORS

Painting Paperhanging

CHARLES W. ENGLAND

28 King Place, Belleville, N. J. Belleville 2-1569

Estimates Furnished On Request

CALL BELLEVILLE 2-3843 For an Estimate on Your Spring Painting or Paperhanging Floor Scraping Amzi MacLaughlin Painter and Decorator 119 New St. Belleville, N. J. 5-16

JOHN H. GEIGER  
Paper Hanger — Plasterer  
Painter — Decorator  
Fine Workmanship  
Moderate Prices  
202 Greylock Pkwy BE. 2-2128  
4-25-40 tf

#### MONUMENTS

MONUMENTS MARKERS

Home: Arthur W. Dey  
281 Main Street  
Belleville 2-1582  
Office: 223 Broad Street  
Bloomfield 2-2613

LETTERING CLEANING  
Our work is represented  
in 43 Cemeteries. 2-29-40-tf

#### WANTED TO BUY

WILL BUY old fashioned Furniture, glass and bric-a-brac. Out of Town Dealer. Write Box 310, Belleville News office, 328 Washington avenue, Belleville. 5-23

#### Hear — — —

New Jersey's  
Next Governor

Harold G.  
Hoffman

and  
Boake Carter

TOMORROW NIGHT

(May 10)

AT 10:30 P.M.

Over WOR

No Equivocation —

Facts of The Campaign

Hoffman Has — — —

Ability

Courage

Experience

The Man For The Job

Paid for by  
Belleville Hoffman for Governor Club.

THE BEST WAY  
TO THE  
WORLD'S FAIR

SAFE-  
SWIFT-  
COMFORTABLE

DE CAMP  
BUSES

... take you direct to  
the Penn Station in New  
York where, for 10c,  
a train takes you right to  
the World's Fair in 10  
minutes.

De Camp Buses run on  
schedule, every half hour.

Special rates for  
Private Parties.

DE CAMP BUS LINES

Livingston, N. J. OR 5-8660

GO TO THE WORLD'S FAIR

Bigger... Better

Lowered Admission

Everytime you go, use a

DE CAMP BUS

for convenience, safety

and comfort.

FREE... Beautiful full

color map of World's Fair

showing routes through

New York. Send for map

and Schedules.

## HONOR DR. REOCK WEDNESDAY

Dental Association Will Also  
Observe Its Sixtieth  
Anniversary

The Essex County Dental Association will combine the celebration of its sixtieth anniversary with a testimonial dinner in honor of the retiring president, Dr. Ernest C. Reock of Washington avenue, next Wednesday evening at 7 at the Newark Athletic Club when they will have a banquet followed by the presentation of a gift to Dr. Reock and gold keys of office to all the living past presidents. Dr. Leonard Gray of Newark, president-elect, will be the toastmaster and Dr. Horace Taintum of Nutley will be the principal speaker paying tribute to Dr. Reock.

## Club Evergreen Opens Tuesday

Under new management and with a completely new decorative scheme the Club Evergreen in Bloomfield opens Tuesday night with a name band policy. For the opening engagement Van Alexander, popular, radio, stage and recording artist and his orchestra will be the attraction. A conga-rumba band also will be there. The Club Evergreen is now under the management of Joe Rines, well-known orchestra leader, who recently completed a two-year engagement at the St. Regis Hotel in New York.

## FRESH MEAT FOR DOGS Delivered Daily

All Lean Meat,  
No Fat or Scraps used ..... lb. 15¢

Wholesale Price For Kennel Owners

FREE — FREE — FREE

One pound of fresh meat and one pound of Wilson All Terrier Dog Food given free on presentation of this ad.

## BROADWAY PET SHOP

656 Broadway  
PHONE HUMBOLDT 2-6015

Newark, N. J.  
FREE DELIVERY



# SUPER MARKETS

OWNED AND OPERATED BY THE GREAT ATLANTIC & PACIFIC TEA CO.

SELF-SERVICE • FOOD • STORES

## SPRING VEGETABLES—Garden Fresh

|                    |                   |           |     |
|--------------------|-------------------|-----------|-----|
| STRING BEANS       | FRESH GREEN       | 2 Lbs.    | 15¢ |
| NEW POTATOES       | U. S. No. 1 Grade | 5 Lbs.    | 17¢ |
| GREEN PEAS         | SWEET-TENDER      | 2 Lbs.    | 15¢ |
| CALIFORNIA ORANGES | Large Size        | 8 for     | 25¢ |
| YELLOW BANANAS     | GOLDEN RIPE       | Lb.       | 5¢  |
| LEMONS             | CALIFORNIA—Juicy  | 6 for     | 10¢ |
| RHUBARB            | FROM LOCAL FARMS  | 3 Bunches | 10¢ |
| CUCUMBERS          |                   | Each      | 5¢  |
| EATING APPLES      | WINESAP—FANCY     | 3 Lbs.    | 19¢ |

|                        |                       |               |     |
|------------------------|-----------------------|---------------|-----|
| EVAP. MILK             | WHITE HOUSE           | Tall Can      | 6¢  |
|                        | All Milk—Pure Milk    | 3 29 Oz.      | 25¢ |
| YUKON CLUB             | Pale Dry—Lime Dry     | 1 Lb.         | 27¢ |
|                        | Fruit Beverages       | PLUS DEPOSIT  |     |
| SANKA or KAFFEE HAG    |                       | Tin           | 37¢ |
| MAZOLA or WESSON       | OIL                   | Can           | 19¢ |
| BAKER'S COCOA          |                       | 2 1/2 Lb.     | 15¢ |
| SILVERDUST             | With Towel            | Lge. Pkg.     | 19¢ |
| FRESH PRUNES           |                       | No. 2 1/2 Can | 10¢ |
| DOLE'S PINEAPPLE JUICE |                       | 18 Oz.        | 9¢  |
| Alaska Red SALMON      | Sultana or Sunnybrook | 1 Lb.         | 23¢ |
| SEMINOLE TISSUE        |                       | 2 Rolls       | 11¢ |
| SALAD DRESSING         | ANN PAGE              | Pt. Jar       | 15¢ |
| MAYONNAISE             | ENCORE BRAND          | Pt. Jar       | 19¢ |
| GRAHAM CRACKERS        | N.B.C.                | 1 Lb.         | 15¢ |

## "A meal without MEAT is a meal incomplete"

FERRIS, WILSON'S CERTIFIED, CUDAHY'S PURITAN, SWIFT'S PREMIUM, SUNNYFIELD

|                           |                                      |                        |                        |                      |                            |      |            |
|---------------------------|--------------------------------------|------------------------|------------------------|----------------------|----------------------------|------|------------|
| <b>SMOKED HAM</b>         | <b>FANCY</b>                         | 10 to 12 Pound Average | Lb.                    | <b>19¢</b>           |                            |      |            |
| <b>PRIME RIBS of BEEF</b> | Cut from 1st Six Ribs                |                        | Lb.                    | <b>25¢</b>           |                            |      |            |
| <b>LEGS of LAMB</b>       | SELECTED Choice Grade One Price Only |                        | Lb.                    | <b>23¢</b>           |                            |      |            |
| <b>TURKEYS</b>            | Pilgrim Brand Extra Fancy            | Sizes Under 12 lbs.    | Lb.                    | <b>28¢</b>           |                            |      |            |
|                           |                                      | Sizes 12 lbs. & Over   | Lb.                    | <b>25¢</b>           |                            |      |            |
| <b>POT ROAST</b>          | <b>BONELESS CHUCK</b>                | Corn-fed Steer Beef    | Lb.                    | <b>25¢</b>           |                            |      |            |
| <b>BACON</b>              | <b>SLICED</b>                        |                        | <b>2 1/2 Lb. Pkgs.</b> | <b>19¢</b>           |                            |      |            |
| SUNNYFIELD—Sugar-Cured    |                                      |                        |                        |                      |                            |      |            |
| Round Pot Roast           | Top or Bottom                        | Lb.                    | <b>29¢</b>             | Loin Pork Chops      | Center Cuts                | Lb.  | <b>25¢</b> |
| Chuck Roast               | Bone In                              | Lb.                    | <b>18¢</b>             | Pork Loins           | Fresh Whole or Either Half | Lb.  | <b>18¢</b> |
| Plate & Navel Beef        | Fresh or Corned                      | Lb.                    | <b>8¢</b>              | Fresh Hams           | Whole or Either Half       | Lb.  | <b>18¢</b> |
| Top Sirloin Roast         |                                      | Lb.                    | <b>29¢</b>             | Spare Ribs           | Fresh                      | Lb.  | <b>13¢</b> |
| Cross-Rib Pot Roast       |                                      | Lb.                    | <b>28¢</b>             | Fresh Calas          | Short Cut Pork Shoulders   | Lb.  | <b>13¢</b> |
| Boneless Brisket Beef     | Fresh or Corned                      | Lb.                    | <b>23¢</b>             | Smoked Butts         | Sugar-Cured                | Lb.  | <b>25¢</b> |
| Chopped Beef              |                                      | Lb.                    | <b>17¢</b>             | Smoked Calas         | Short Cut Pork Shoulders   | Lb.  | <b>15¢</b> |
| Leg or Rump of Veal       |                                      | Lb.                    | <b>23¢</b>             | Slices of Smoked Ham | Center Cuts                | Lb.  | <b>35¢</b> |
| Breast & Neck of Veal     |                                      | Lb.                    | <b>15¢</b>             | Ducks                | Long Island—Extra Fancy    | Lb.  | <b>18¢</b> |
| Veal Shoulders            | Whole                                | Lb.                    | <b>17¢</b>             | Fowl                 | Extra Fancy—Milk-Fed       | Lb.  | <b>23¢</b> |
| Fresh Mackerel            | Large                                | Lb.                    | <b>9¢</b>              |                      | Sizes 3 to 3 1/2 lbs.      | Lb.  | <b>12¢</b> |
| Fresh Buck Shad           |                                      | Lb.                    | <b>7¢</b>              | Fresh Flounders      | Large                      | Lb.  | <b>12¢</b> |
| Fresh Roe Shad            |                                      | Lb.                    | <b>13¢</b>             | Fresh Scallops       |                            | Lb.  | <b>21¢</b> |
|                           |                                      |                        |                        | Chowder Clams        |                            | Doz. | <b>15¢</b> |

## DAIRY PRODUCTS

|                 |                      |                   |     |
|-----------------|----------------------|-------------------|-----|
| SELECTED EGGS   | Mixed Colors         | Doz.              | 21¢ |
| CRESTVIEW EGGS  | Large                | Carton of 1 Dozen | 23¢ |
| WILDMERE EGGS   | Selected             | 1 Dozen           | 27¢ |
| MUENSTER CHEESE | Fancy                | Lb.               | 17¢ |
| STORE CHEESE    | Mild American        | Lb.               | 21¢ |
| BUTTER          | Sweet or Salt        | Lb.               | 32¢ |
| SWISS CHEESE    | Fancy Domestic       | Lb.               | 29¢ |
| AMERICAN CHEESE | MEL-O-BIT            | Box               | 41¢ |
| SHARP CHEESE    | Whole Milk Cheddar   | Lb.               | 23¢ |
| BUTTER          | SILVERBROOK CREAMERY | Lb.               | 30¢ |
| PURE LARD       | Cut From Tub         | Lb.               | 7¢  |
|                 | From Tub             | Print             | 8¢  |

THORO-BAKED—Only pure Vegetable Shortening used

## MARVEL BREAD

Each slice firm, yet tender! A Real Value!

169-71 WASHINGTON AVENUE, BELLEVILLE, NEW JERSEY

Between Belleville Avenue and Rutgers Street — Across from Town Hall

The same low prices effective at A&P's Super Markets

237 Franklin Ave., Nutley, N. J. 445 Bloomfield Avenue, Bloomfield, N. J. (Opposite Roosevelt Avenue)

STORE HOURS: Mon., Tues., Wed., Thurs., 8 A. M. to 6 P. M. Open late Fri. and Sat. Evenings



## Coming Events

**Today**  
Woman's Republican Club luncheon meeting at Woman's Club, 12:45.  
Del Na Club Rummage Sale, 157 Stephen street all day from 9. Also tomorrow and Saturday.  
South End Improvement Association meeting at 196 Mill street at 8:30.  
Hoffman For Governor Club Meeting at Elks Club, 8.  
Campaign Rally United Jewish Appeal of Essex County at Congregation A.A.A., 8.  
**Friday**  
Belleville District Boy Scouts Camporee at Clearman Field today, tomorrow and Sunday.  
Musketiers A. C. Card Party at Montgomerie Presbyterian Church, 8.  
**Saturday**  
Goodwill Chapter, World Wide Guild Penny Supper at Grace Baptist Church Recreation Rooms, 5:30.  
Jr. O. U. A. M., Daughters of America Minstrel at Park Auditorium, 8:15.  
Belleville Manufacturer's League banquet and prize awards at Four Towers, Cedar Grove, 7.  
Joseph King Association meeting at 414 Washington avenue, Freeholder Walter S. Gray, Speaker, 8.  
**Sunday**  
St. Peter's Holy Name Society Communion Breakfast at New School Building, 9.  
American Legion, Post 105, all day trip to Veteran's Hospital at Lyons, Speaker, Representative Martin A. Dies.  
Bethany, Evangelical Lutheran Church ground breaking: Jerusalem and New streets, 3:30.  
Reformed Church Christian Endeavor Society Special Mother's Day service, 7.  
**Monday**  
Arenne Chapter, O. E. S. meeting at Masonic Temple, 8.  
Camera Club meeting at Recreation House, 8.  
Women's Auxiliary of the Elks Club, meeting at Elks Club, American Legion, Post 105, business meeting and nomination of officers at Recreation House, 8.  
P.T.A. School Number Five regular monthly meeting at school, 8.  
Home and School Association, School No. 9, meeting at school, 8:15.  
P.T.A. School Number One meeting at school, 8.  
**Tuesday**  
Good American Council, Daughters of America meeting at Veteran's Hall, 8.  
P.T.A. School Number Three meeting at school, 8.  
Suburban Chapter DeMolay meeting at Masonic Temple, 7:30.  
Petraean Society meeting at St. Peter's Hall, 8:30.  
**Wednesday**  
School No. 9 Spring Festival and tulip display all day.  
Onetta, The Jew of the Golden Cheese, at 8 p.m.  
Roofree Branch, International Sunshine public Card Party at Woman's Club, 8:30.  
B. H. S. Alumni Association general meeting at High School, 8.  
Hendrickson For Governor Rally, Senator Robert Hendrickson, speaker, at King Association, 414 Washington avenue, 8.  
**Thursday**  
Belleville Chapter O. E. S. meeting at Masonic Temple, 8.  
St. Peter's Social Society meeting at St. Peter's Hall, 8:30.  
**SHERIFF'S SALE**  
(Common Pleas B-173)  
SHERIFF'S SALE—Essex Common Pleas Court, Silver Lake Loan Assn. assigned to Woodside B. & L. Assn. Plaintiff vs. Frank Grande, defendant, Fl. fa. de do. et al. on docketed judgment.  
By virtue of the above stated writ of fieri facias, to be directed, I shall expose for sale by public vendue, at the Court House, in Newark, on Tuesday, the fourth day of May next, at one o'clock P. M. (Eastern Standard Time), all that tract or parcel of land and premises situate, being and being in the Town of Belleville, Essex County, New Jersey. Beginning at a point in the southerly

line of Florence Avenue therein distant 75.25 feet east from the corner of the same and Franklin Street; thence southerly and at right angles to Florence Avenue 108.49 feet more or less to the rear line of property fronting on the said Florence Avenue; thence westerly and along said rear line of lots fronting on Florence Avenue 25.01 feet; thence northerly and parallel with the first course 109.14 feet to the said line of Florence Avenue; thence easterly and along the same 25 feet to the point or place of Beginning.  
Belleville known and designated as Street No. 60 Florence Avenue, Belleville, New Jersey.  
The approximate amount of the Judgment to be satisfied by said sale is the sum of Three hundred Eighty-seven Dollars and Thirty-nine Cents (\$387.39), together with the costs of this sale.  
Newark, N. J., April 8, 1940.  
FREDERICK C. RITZER, JR., Sheriff.  
\$16.80  
5-9

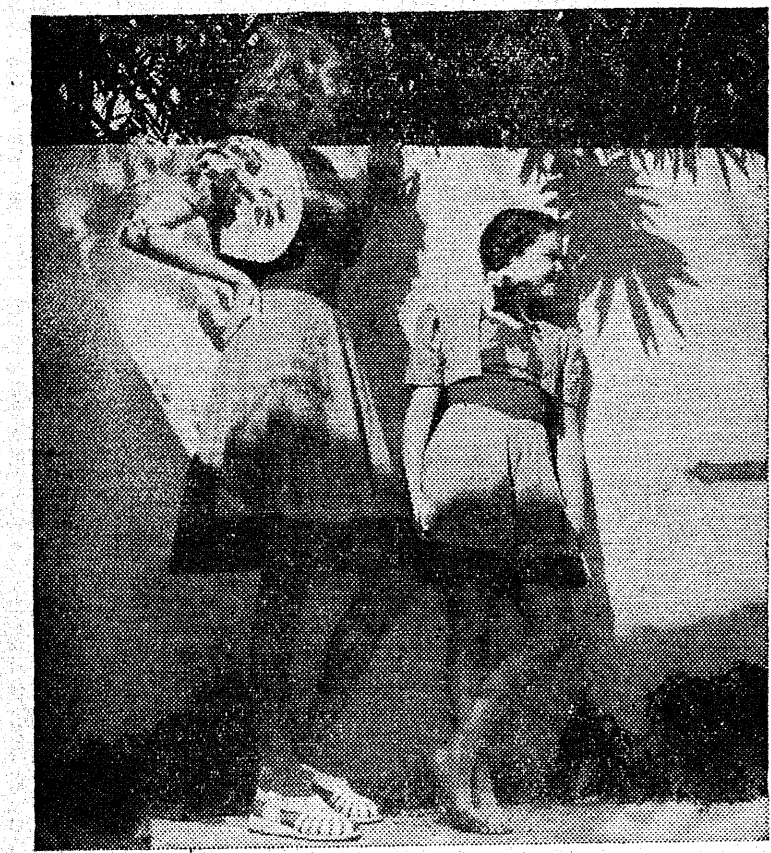
## ELECTION NOTICE

Notice is hereby given that a Primary Election will be held on Tuesday, May 21, 1940, 7 A.M. to 8 P.M. (Standard Time.) United States Senator.  
Governor.  
Members of the House of Representatives.  
Twelve Assemblymen.  
Delegates and Alternates to National Convention.  
State Committee, male and female.  
County Clerk.  
County Register.  
Three Freeholders.  
Justices of the Peace.  
Members of the Board of Education.  
**FIRST WARD**  
1. Dist. Rutgers St from Passaic River to Washington St to Joralemon St to Cortlandt St to Tarry St and line to Passaic River to Tarry St.  
Polling Place, School No. 1, 30 Academy Street.  
2. Dist. Washington Av from Nk. line to Rutgers St to Passaic River to Nk. line to Washington Avenue.  
Polling Place, Veteran's House, 19 Belleville Avenue.  
3. Dist. Washington Av from Joralemon St to Nutley line to Passaic River to Tarry St to Cortlandt St to Joralemon St to Washington Ave.  
Polling Place, School No. 9, 305 Ralph Street.  
**SECOND WARD**  
1. Dist. Academy St from Washington Av to Hornblower Av to Van Houten Pl to Prospect St to Holmdel St to Union Av to Joralemon St to Washington Av to Academy Street.  
Polling Place, Women's Club, 51 Rossmore.  
2. Dist. William St from Washington Av to Clinton St to DeWitt Av to Van Houten Pl to Prospect St to Holmdel St to Union Av to Joralemon St to Washington Av to Academy Street.  
Polling Place, Eastwood Fire House, 127 William Street.  
3. Dist. Nk. line from Union Av to Garden Av to Joralemon St to Cedar Hill Av to Tarry St to Nk. line to New St to Belv. Av to Union Av to Nk. line.  
Polling Place, School No. 8, 109 Union Avenue.  
4. Dist. Belv. Av from DeWitt Av to New St to Tarry St to Nk. line to Union Av to Joralemon St to Washington Av to Van Houten Pl to Prospect St to Holmdel St to Union Av to Joralemon St to Washington Av to Academy Street.  
Polling Place, School No. 8, 109 Union Avenue.  
5. Dist. Nk. line from Washington Av to Union Av to DeWitt Av to Van Houten Pl to Prospect St to Holmdel St to Union Av to Joralemon St to Washington Av to Academy Street.  
Polling Place, Eastwood Fire House, 127 William Street.  
**THIRD WARD**  
1. Dist. Joralemon St from Hornblower Av to Passaic Av to Division Av to De Witt Av to Tarry St to Nk. line to Division Av to Hornblower Av to Joralemon Street.  
Polling Place, School No. 3, 246 Joralemon Street.  
2. Dist. Joralemon St from Washington Av to Hornblower Av to Division Av to Linden Av to Overlook Av to Washington Av to Joralemon Street.  
Polling Place, Christ Church Parish House, 109 Washington Street.  
3. Dist. Malone Av from Linden Av to DeWitt Av to Overlook Av to Union Av to Greylock Av to Linden Av to Malone Avenue.  
Polling Place, Grace Baptist Church, 41 Broadway Street.  
4. Dist. DeWitt Av from DeWitt Av to Tiona Av to Forest St to Overlook Av to DeWitt Av to Division Street.  
Polling Place, Presbyterian Church, room 314 Little Street.  
5. Dist. Overlook Av from Washington Av to Linden Av to Greylock Av to Nutley line to Washington Av to Overlook Av to Division Street, Grace Baptist Church, 41 Broadway Street.  
6. Dist. Overlook Av from Union Av to Forest St to Tiona Av to Division Av to Passaic Av to Division Street to Union Av to DeWitt Av to Greylock Av to Union Av to Overlook Avenue.  
Polling Place, School No. 5, 135 Adelaide Street.  
**FOURTH WARD**  
1. Dist. Franklin St from Nk. line to Blvd. line to Nk. Av to Nk. line to Franklin Street.  
Polling Place, Fire House, No. 3, 134 Franklin Street.  
2. Dist. Nk. Av from Nk. line to Blvd. line to Erie R. R. to Nk. line to Nk. Avenue.  
Polling Place, School No. 2, 680 Mill Street.  
3. Dist. Franklin St from Nk. line to Blvd. line to Nk. line to Franklin Street to Joralemon St to Garden Av to Essex County Pl. line to Garden Av to Nk. line to Erie R. R.  
Polling Place, School No. 10, 527 Belleville Avenue.  
ESSEX COUNTY BOARD OF ELECTIONS  
Attest: Elmer J. Herrmann, Clerk.

**PUBLIC NOTICE**  
PUBLIC NOTICE is hereby given that I, William H. Williams, Mayor and Director of the Department of Revenue and Finance of the Town of Belleville, N. J., will sell at public sale to the highest bidder for cash the following properties in the Town of Belleville, County of Essex and State of New Jersey:  
**FIRST TRACT:** 9 Watchung Avenue, Block 756 Lot 47.  
**SECOND TRACT:** 9-11 Arthur Street and 19 to 25 Charles Street, Block 428 Lots 5 and 6, and Block 507 Lots 73, 74, 75, 76.  
**THIRD TRACT:** 64-81 Continental Avenue, Block 417 Lot 20.  
**FOURTH TRACT:** 176 Washington Avenue, Block 74, Lot 13.  
**FIFTH TRACT:** 21 and 25 to 61 Parkside Drive, Block 257 Lots 1-3-5-7-9-11-13-15-17-19-21-23-25-27-29-31-33-35-37-39-41-43-45-47-49-51-53-55-57-59-61-63-65-67-69-71-73-75-77-79-81-83-85-87-89-91-93-95-97-99-101-103-105-107-109-111-113-115-117-119-121-123-125-127-129-131-133-135-137-139-141-143-145-147-149-151-153-155-157-159-161-163-165-167-169-171-173-175-177-179-181-183-185-187-189-191-193-195-197-199-201-203-205-207-209-211-213-215-217-219-221-223-225-227-229-231-233-235-237-239-241-243-245-247-249-251-253-255-257-259-261-263-265-267-269-271-273-275-277-279-281-283-285-287-289-291-293-295-297-299-301-303-305-307-309-311-313-315-317-319-321-323-325-327-329-331-333-335-337-339-341-343-345-347-349-351-353-355-357-359-361-363-365-367-369-371-373-375-377-379-381-383-385-387-389-391-393-395-397-399-401-403-405-407-409-411-413-415-417-419-421-423-425-427-429-431-433-435-437-439-441-443-445-447-449-451-453-455-457-459-461-463-465-467-469-471-473-475-477-479-481-483-485-487-489-491-493-495-497-499-501-503-505-507-509-511-513-515-517-519-521-523-525-527-529-531-533-535-537-539-541-543-545-547-549-551-553-555-557-559-561-563-565-567-569-571-573-575-577-579-581-583-585-587-589-591-593-595-597-599-601-603-605-607-609-611-613-615-617-619-621-623-625-627-629-631-633-635-637-639-641-643-645-647-649-651-653-655-657-659-661-663-665-667-669-671-673-675-677-679-681-683-685-687-689-691-693-695-697-699-701-703-705-707-709-711-713-715-717-719-721-723-725-727-729-731-733-735-737-739-741-743-745-747-749-751-753-755-757-759-761-763-765-767-769-771-773-775-777-779-781-783-785-787-789-791-793-795-797-799-801-803-805-807-809-811-813-815-817-819-821-823-825-827-829-831-833-835-837-839-841-843-845-847-849-851-853-855-857-859-861-863-865-867-869-871-873-875-877-879-881-883-885-887-889-891-893-895-897-899-901-903-905-907-909-911-913-915-917-919-921-923-925-927-929-931-933-935-937-939-941-943-945-947-949-951-953-955-957-959-961-963-965-967-969-971-973-975-977-979-981-983-985-987-989-991-993-995-997-999-1001-1003-1005-1007-1009-1011-1013-1015-1017-1019-1021-1023-1025-1027-1029-1031-1033-1035-1037-1039-1041-1043-1045-1047-1049-1051-1053-1055-1057-1059-1061-1063-1065-1067-1069-1071-1073-1075-1077-1079-1081-1083-1085-1087-1089-1091-1093-1095-1097-1099-1101-1103-1105-1107-1109-1111-1113-1115-1117-1119-1121-1123-1125-1127-1129-1131-1133-1135-1137-1139-1141-1143-1145-1147-1149-1151-1153-1155-1157-1159-1161-1163-1165-1167-1169-1171-1173-1175-1177-1179-1181-1183-1185-1187-1189-1191-1193-1195-1197-1199-1201-1203-1205-1207-1209-1211-1213-1215-1217-1219-1221-1223-1225-1227-1229-1231-1233-1235-1237-1239-1241-1243-1245-1247-1249-1251-1253-1255-1257-1259-1261-1263-1265-1267-1269-1271-1273-1275-1277-1279-1281-1283-1285-1287-1289-1291-1293-1295-1297-1299-1301-1303-1305-1307-1309-1311-1313-1315-1317-1319-1321-1323-1325-1327-1329-1331-1333-1335-1337-1339-1341-1343-1345-1347-1349-1351-1353-1355-1357-1359-1361-1363-1365-1367-1369-1371-1373-1375-1377-1379-1381-1383-1385-1387-1389-1391-1393-1395-1397-1399-1401-1403-1405-1407-1409-1411-1413-1415-1417-1419-1421-1423-1425-1427-1429-1431-1433-1435-1437-1439-1441-1443-1445-1447-1449-1451-1453-1455-1457-1459-1461-1463-1465-1467-1469-1471-1473-1475-1477-1479-1481-1483-1485-1487-1489-1491-1493-1495-1497-1499-1501-1503-1505-1507-1509-1511-1513-1515-1517-1519-1521-1523-1525-1527-1529-1531-1533-1535-1537-1539-1541-1543-1545-1547-1549-1551-1553-1555-1557-1559-1561-1563-1565-1567-1569-1571-1573-1575-1577-1579-1581-1583-1585-1587-1589-1591-1593-1595-1597-1599-1601-1603-1605-1607-1609-1611-1613-1615-1617-1619-1621-1623-1625-1627-1629-1631-1633-1635-1637-1639-1641-1643-1645-1647-1649-1651-1653-1655-1657-1659-1661-1663-1665-1667-1669-1671-1673-1675-1677-1679-1681-1683-1685-1687-1689-1691-1693-1695-1697-1699-1701-1703-1705-1707-1709-1711-1713-1715-1717-1719-1721-1723-1725-1727-1729-1731-1733-1735-1737-1739-1741-1743-1745-1747-1749-1751-1753-1755-1757-1759-1761-1763-1765-1767-1769-1771-1773-1775-1777-1779-1781-1783-1785-1787-1789-1791-1793-1795-1797-1799-1801-1803-1805-1807-1809-1811-1813-1815-1817-1819-1821-1823-1825-1827-1829-1831-1833-1835-1837-1839-1841-1843-1845-1847-1849-1851-1853-1855-1857-1859-1861-1863-1865-1867-1869-1871-1873-1875-1877-1879-1881-1883-1885-1887-1889-1891-1893-1895-1897-1899-1901-1903-1905-1907-1909-1911-1913-1915-1917-1919-1921-1923-1925-1927-1929-1931-1933-1935-1937-1939-1941-1943-1945-1947-1949-1951-1953-1955-1957-1959-1961-1963-1965-1967-1969-1971-1973-1975-1977-1979-1981-1983-1985-1987-1989-1991-1993-1995-1997-1999-2001-2003-2005-2007-2009-2011-2013-2015-2017-2019-2021-2023-2025-2027-2029-2031-2033-2035-2037-2039-2041-2043-2045-2047-2049-2051-2053-2055-2057-2059-2061-2063-2065-2067-2069-2071-2073-2075-2077-2079-2081-2083-2085-2087-2089-2091-2093-2095-2097-2099-2101-2103-2105-2107-2109-2111-2113-2115-2117-2119-2121-2123-2125-2127-2129-2131-2133-2135-2137-2139-2141-2143-2145-2147-2149-2151-2153-2155-2157-2159-2161-2163-2165-2167-2169-2171-2173-2175-2177-2179-2181-2183-2185-2187-2189-2191-2193-2195-2197-2199-2201-2203-2205-2207-2209-2211-2213-2215-2217-2219-2221-2223-2225-2227-2229-2231-2233-2235-2237-2239-2241-2243-2245-2247-2249-2251-2253-2255-2257-2259-2261-2263-2265-2267-2269-2271-2273-2275-2277-2279-2281-2283-2285-2287-2289-2291-2293-2295-2297-2299-2301-2303-2305-2307-2309-2311-2313-2315-2317-2319-2321-2323-2325-2327-2329-2331-2333-2335-2337-2339-2341-2343-2345-2347-2349-2351-2353-2355-2357-2359-2361-2363-2365-2367-2369-2371-2373-2375-2377-2379-2381-2383-2385-2387-2389-2391-2393-2395-2397-2399-2401-2403-2405-2407-2409-2411-2413-2415-2417-2419-2421-2423-2425-2427-2429-2431-2433-2435-2437-2439-2441-2443-2445-2447-2449-2451-2453-2455-2457-2459-2461-2463-2465-2467-2469-2471-2473-2475-2477-2479-2481-2483-2485-2487-2489-2491-2493-2495-2497-2499-2501-2503-2505-2507-2509-2511-2513-2515-2517-2519-2521-2523-2525-2527-2529-2531-2533-2535-2537-2539-2541-2543-2545-2547-2549-2551-2553-2555-2557-2559-2561-2563-2565-2567-2569-2571-2573-2575-2577-2579-2581-2583-2585-2587-2589-2591-2593-2595-2597-2599-2601-2603-2605-2607-2609-2611-2613-2615-2617-2619-2621-2623-2625-2627-2629-2631-2633-2635-2637-2639-2641-2643-2645-2647-2649-2651-2653-2655-2657-2659-2661-2663-2665-2667-2669-2671-2673-2675-2677-2679-2681-2683-2685-2687-2689-2691-2693-2695-2697-2699-2701-2703-2705-2707-2709-2711-2713-2715-2717-2719-2721-2723-2725-2727-2729-2731-2733-2735-2737-2739-2741-2743-2745-2747-2749-2751-2753-2755-2757-2759-2761-2763-2765-2767-2769-2771-2773-2775-2777-2779-2781-2783-2785-2787-2789-2791-2793-2795-2797-2799-2801-2803-2805-2807-2809-2811-2813-2815-2817-2819-2821-2823-2825-2827-2829-2831-2833-2835-2837-2839-2841-2843-2845-2847-2849-2851-2853-2855-2857-2859-2861-2863-2865-2867-2869-2871-2873-2875-2877-2879-2881-2883-2885-2887-2889-2891-2893-2895-2897-2899-2901-2903-2905-2907-2909-2911-2913-2915-2917-2919-2921-2923-2925-2927-2929-2931-2933-2935-2937-2939-2941-2943-2945-2947-2949-2951-2953-2955-2957-2959-2961-2963-2965-2967-2969-2971-2973-2975-2977-2979-2981-2983-2985-2987-2989-2991-2993-2995-2997-2999-3001-3003-3005-3007-3009-3011-3013-3015-3017-3019-3021-3023-3025-3027-3029-3031-3033-3035-3037-3039-3041-3043-3045-3047-3049-3051-3053-3055-3057-3059-3061-3063-3065-3067-3069-3071-3073-3075-3077-3079-3081-3083-3085-3087-3089-3091-3093-3095-3097-3099-3101-3103-3105-3107-3109-3111-3113-3115-3117-3119-3121-3123-3125-3127-3129-3131-3133-3135-3137-3139-3141-3143-3145-3147-3149-3151-3153-3155-3157-3159-3161-3163-3165-3167-3169-3171-3173-3175-3177-3179-3181-3183-3185-3187-3189-3191-3193-3195-3197-3199-3201-3203-3205-3207-3209-3211-3213-3215-3217-3219-3221-3223-3225-3227-3229-3231-3233-3235-3237-3239-3241-3243-3245-3247-3249-3251-3253-3255-3257-3259-3261-3263-3265-3267-3269-3271-3273-3275-3277-3279-3281-3283-3285-3287-3289-3291-3293-3295-3297-3299-3301-3303-3305-3307-3309-3311-3313-3315-3317-3319-3321-3323-3325-3327-3329-3331-3333-3335-3337-3339-3341-3343-3345-3347-3349-3351-3353-3355-3357-3359-3361-3363-3365-3367-3369-3371-3373-3375-3377-3379-3381-3383-3385-3387-3389-3391-3393-3395-3397-3399-3401-3403-3405-3407-3409-3411-3413-3415-3417-3419-3421-3423-3425-3427-3429-3431-3433-3435-3437-3439-3441-3443-3445-3447-3449-3451-3453-3455-3457-3459-3461-3463-3465-3467-3469-3471-3473-3475-3477-3479-3481-3483-3485-3487-3489-3491-3493-3495-3497-3499-3501-3503-3505-3507-3509-3511-3513-3515-3517-3519-3521-3523-3525-3527-3529-3531-3533-3535-3537-3539-3541-3543-3545-3547-3549-3551-3553-3555-3557-3559-3561-3563-3565-3567-3569-3571-3573-3575-3577-3579-3581-3583-3585-3587-3589-3591-3593-3595-3597-3599-3601-3603-3605-3607-3609-3611-3613-3615-3617-3619-3621-3623-3625-3627-3629-3631-3633-3635-3637-3639-3641-3643-3645-3647-3649-3651-3653-3655-3657-3659-3661-3663-3665-3667-3669-3671-3673-3675-3677-3679-3681-3683-3685-3687-3689-3691-3693-3695-3697-3699-3701-3703-3705-3707-3709-3711-3713-3715-3717-3719-3721-3723-3725-3727-3729-3731-3733-3735-3737-3739-3741-3743-3745-3747-3749-3751-3753-3755-3757-3759-3761-3763-3765-3767-3769-3771-3773-3775-3777-3779-3781-3783-3785-3787-3789-3791-3793-3795-3797-3799-3801-3803-3805-3807-3809-3811-3813-3815-3817-3819-3821-3823-3825-3827-3829-3831-3833-3835-3837-3839-3841-3843-3845-3847-3849-3851-3853-3855-3857-3859-3861-3863-3865-3867-3869-3871-3873-3875-3877-3879-3881-3883-3885-3887-3889-3891-3893-3895-3897-3899-3901-3903-3905-3907-3909-3911-3913-3915-3917-3919-3921-3923-3925-3927-3929-3931-3933-3935-3937-3939-3941-3943-3945-3947-3949-3951-3953-3955-3957-3959-3961-3963-3965-3967-3969-3971-3973-3975-3977-3979-3981-3983-3985-3987-3989-3991-399



Two Of A Kind Popular



Mother and daughter frocks captivate everyone and most of them feature the flaring skirts and little boleros shown above. In soft blue, with a false hem applied on in violet to match the basque waist of the dress, the dresses above are made of muslin which launders well without having to be ironed.

OVER THE WOMAN'S DESK

by Peggy Patterson

An article on the proper organization of your housework, which we think too profitable to discard without passing along a few highlights to you, smacks strongly of the good old-fashioned routine which Grandmother used. The parallel was not drawn but it might well have been for the principles of Grandmother's routine adapted to our present day needs might not be a bad idea. Of course, one does not have to make hard and fast rules about washing on Monday, ironing on Tuesday, cleaning on Friday, etc., but those of us who have ever been familiar with the peace and quiet which settled down on Grandmother after the noonday meal was cleared away might do well to think what this persistent relaxation could do for our nerves, complexions and general health.

We naturally want our afternoons for other occupations than the sewing or crocheting that occupied our foremothers; we want more for golf, swimming and walking. But a certain amount of handwork still goes with home-making; and besides, every woman gets a thrill of pride from neatly darned socks and trimly sewed on buttons. These necessities must be accomplished almost without being noticed and it is suggested that a large, well-equipped knitting bag which can be carried with you when meeting the trains, waiting for the children to come out of school, taking your sunbath and on any other occasion when you might have an excuse for idle hands will enable you to accomplish a great deal more than you can imagine.

Employing Short Cuts

Another good idea is to cultivate the habit of making one trip up or down stairs do the work of half a dozen. Have a convenient spot where you can deposit a collection of items. Use all the short cuts you can in planning and cooking meals. Elaborate dishes which require long periods of watching should be taboo, especially for the coming season when your family will appreciate much more your own rested, cheerful mood through the trying hot weather.

move your own rested, cheerful mood through the trying hot weather.

Above all, it is pointed out, it pays to closely schedule your labors. Pretend that you are working for someone else and must finish your required tasks in an eight-hour period. Keep your eye on the clock. Of course, you will say, that unexpected interruptions make it impossible to keep to a schedule. Many of the interruptions are self-made, however, and if you will resist the temptation to make a telephone call of glance through a magazine when you could postpone these activities until evening, you will be amazed at the time saved.

No matter how enthusiastic you may become over innovations for your home, recovering some furniture, tinting curtains or like activities, never let these jobs creep into the first morning hours. Let these hours be given over to the routine of cleaning, dusting, bed-making, dish washing and food preparing which are "musts" for every day. These first hours are your freshest and the routine will bring you less if it is systematically put out of the way.

Parents who would foster the artistic abilities of their children often, too often, go about it in exactly the wrong way, according to those who are making exhaustive studies and experimentations on the subject. The age-old practice of giving small children books of completed pictures to color is not as much an inspiration to produce perfect results as it is an aggravation when they find that they cannot achieve such perfection. In fact, a child may become discouraged and self-conscious so that he will lose interest. Another fault is doing the drawing for the child. He will be more stimulated if he views the drawings of other children of his own approximate age.

Dampening His Enthusiasm

One of the points that interested us most is the warning not to ask a child "What is it?" when he presents for inspection a blob of color. This implies that he has failed to make something recognizable wherein to him it definitely stands for something. This feeling may also check his urge to continue painting. Also, don't make him talk too much about his efforts. Asking a lot of questions may appear to be the way to show your interest. But often the child will get the idea that he must give an accounting of everything he does and will thereby find it a task and not a pleasure.

As to the actual mechanics of drawing and painting, give the small child large crayons and very large sheets of paper. This will give him the opportunity to free arm movement and you will notice how the smallest child likes to make large, sweeping strokes which involve shoulder as well as arm movement.

With these tools leave him alone and rest assured that the time will not be wasted. When he comes to show you his pictures perhaps he will like to name them. Write the legend on the back of the picture, such as "house" or simply the name of the color he has used. This and the hanging of his picture on the wall of his room will make him feel a great deal of satisfaction and if he has real talent, you will catch the elusive thing.

Outdoor Living Room Will Help You Keep Cool

If you have not already one, plan this summer for an outdoor living room. A terrace with awning or your nicest level piece of lawn will immediately become a charming room if you arrange there some of the lovely, durable furniture which has been designed for such use. There is no doubt that meals eaten out of doors are cooler, and more zestful, so use as a nucleus a wrought iron table and chairs. These are being shown in soft green and tan frames as well as the more popular enamelled white. Table tops, of course, are all plate glass which enhances the appearance and makes care easy. Chairs are delicate but sturdy with comfortably high seats and dainty lattice backs and curving arms. Some have sailcloth waterproofed cushions.

To match you may secure wrought iron love seats and chairs with sailcloth cushions in soft colors like green and peach. Occasional tables and nests of tables abound in practically every size and height. They are most popular in white in round, oblong or square shapes and in natural wrought iron with mosaic tops. Individual copper and heavy pottery casseroles are a fine addition to the table service for out of door meals as the food therein will keep hot much longer than when served in shallow china dishes.

In Copper, Pottery

We have seen copper ones with wooden side handles and creamy white pottery ones from which the light fitting covers can be lifted by fishbones posted on their tops. Plates made of polished wood and shaped like leaves are a novelty and a good accompaniment to the individual wooden salad bowls which are naturals for these rustic meals.

We haven't scratched the surface on this subject and will have lots more to tell you. But this will start you thinking. And you will find that a terrace arranged to your plan will be an inspiration to remodel your old one, to make the setting perfect. If you haven't yet turned over a trowel full of earth this spring go right out and do it now. And before you're risen from your knees we'll wager that lovely plans of all sorts are reeling through your brain. A marvelous antidote for all your worries!

Now that you have planned, at least on paper, your gardening activities for the summer, go a step further and plan a wardrobe suited to your labors. This will be not only a delightful but surprisingly inexpensive venture. And you will see at a glance that there is no need to sacrifice appearance to the arduous and sometimes grimy task. Slack suits, slacks with sweaters or shirts and the invaluable play suits with pinafores, to button-on skirts are fresh and abundant in the stores and now is the time, to buy them.

A Variety of Fabrics

If you are addicted to slacks you will probably get no further when you see the assortment in corduroy, flannel, linen and denim and you may buy them in shades of blue, in brown, kelly green, gray, dusty rose and bright cerise. Soft sweaters in all colors and pin-striped and chambray skirts in pastel shades go with them. Particularly smart for early spring wear when the wind still blows in chilly gusts are navy flannel slacks worn with a thick white sweater piped around its smart cutaway lines with navy. White

Coyles Observe Anniversary

Franklin Avenue Couple Mark Event With Family Reunion

Mr. and Mrs. Stuart J. Coyle of Franklin avenue were guests of honor at a family reunion and dinner Saturday when they celebrated their forty-third wedding anniversary at home. Among the guests were Mr. and Mrs. Arthur A. Halbert and family of Kearny, formerly of Glass avenue, Mr. and Mrs. Stuart J. Coyle Jr. and infant son, William of Bloomfield, formerly of Franklin avenue, Mr. and Mrs. Robert Murphy and daughter, Rose, and son, Robert Jr. of Newark, formerly of Franklin avenue, Mr. and Mrs. Alfred Trimble and son, Alfred Jr. of Bradley Beach, Mr. and Mrs. Archibald A. McCaffery, and infant daughter of Philadelphia, Pa., Mr. and Mrs. Neils Dempster, Miss Margaret and Stuart Dempster, Mr. and Mrs. Walter A. Kayser and children of this town. The Coyles received a congratulatory cable from their son-in-law and daughter, Mr. and Mrs. John Carter of Paisley, Scotland.

Mr. and Mrs. Adolph Gross of Jorammon street, celebrated their sixteenth wedding anniversary Saturday evening with a group of friends and relatives from East Orange, North Arlington, Bloomfield and this town.

Mr. and Mrs. Richard E. Garraway and Mrs. Edward O. Cyphers recently moved from 4 Celia terrace to Birchwood drive.

A family dinner party marked the ninth birthday of Anthony Figuerelli, son of Mr. and Mrs. Samuel Figuerelli of Smallwood avenue on Sunday. Guests included his grandparents, Mr. and Mrs. Paul Di Leo, Mr. and Mrs. Anthony Di Leo, Mr. and Mrs. Frank Grande, Mr. and Mrs. Thomas Figuerelli and Mrs. Jane Figuerelli.

Mr. and Mrs. Lloyd Gill and daughter, Elizabeth of Montgomery place attended the wedding ceremony Saturday morning of Miss Betty Moynihan of West Orange and Ferdinand Ketterer of Upper Montclair in St. John R. C. Church in Orange.

Mrs. John Baurehen of Malone avenue will be hostess Tuesday afternoon for the Dessert Card Club. The club will welcome back Mrs. Mary Stevens of Campbell avenue who has been vacationing

for three months in St. Petersburg, Fla. and one month in College Park, Ga. Mrs. Stevens will leave town May 20 for Manasquan Beach where she will spend the summer. Other guests Tuesday will be Mrs. Albert C. Loomis, Mrs. William E. Thetford, Mrs. Anton Till, Mrs. John E. Meade, Mrs. William F. Kull, Mrs. W. I. Suydam and Mrs. William Terry.

Students from Public Schools Three and Five were guests of Charles Graham of Belmont street when he celebrated his tenth birthday with a party at his home Monday afternoon. Those present were his sister Sandra, Ruth Saam, Gloria Caruso, Doris and Richard Moser, Alice Kelly, Jean Griffin, Joan Van Dusen, Carole Wendt, Doris Murray, Lorraine Dingwall, Maureen and Jack Sheehan, Teddy Clemens, James Hall, Billy Findlay and Stephen Smallegde. Mexican colors were used for decorations. Motion pictures were shown.

Miss Marion Barnett, ten-year old daughter of Mr. and Mrs. Harold Barnett of Montgomery place, was guest of honor Sunday when the family celebrated her birthday.

Mrs. Frank Grande of Belmont street was guest of honor at a surprise Stork shower given in her honor Saturday evening by Mrs. James Pisano and Miss Frances Porcelli of Bloomfield. Mr. and Mrs. Frank Grande were dinner guests of Mr. and Mrs. Joseph Gonnello of Walnut street Saturday evening.

Mrs. Ralph M. Moser of Nolton street will be with a party of friends from Maplewood at luncheon following which there will be a Fashion Show Saturday afternoon at the Montclair Inn.

Mr. and Mrs. Anton Till of Bremond street will entertain over the weekend for their son-in-law and daughter, Mr. and Mrs. Leslie Glenck of Albany, N. Y., formerly of this town. Sunday guests of the Tills will be Mr. and Mrs. John Till and son, John Jr. of Livingston, Mr. and Mrs. Joseph Brasher and children of Elizabeth and Mr. and Mrs. William Thompson and son, William Jr. of Upper Montclair, formerly of Tappan avenue.

Mr. and Mrs. Ralph M. Moser of Nolton street attended on Saturday a performance of "The Man Came To Dinner" at the

Be Seen Often



This bathing suit ensemble is one that you are destined to see often in the season. Made of bright plaid crinkled crepe, it is topped with a soft white terry cloth coat which is knee length. Plaid revers on the coat lend smartness. The whole ensemble launders with the greatest of ease.

Just The Thing



Although again pictured on the sands this outfit is equally wearable for gardening or any other summer activity. Shirt and shorts of solid color are topped by a pin-striped pinafore making it easy to step from active sports to lounging or shopping by the simple addition of the skirt and attached bib.

Music Box Theatre in New York with a party of friends from Arlington. Mrs. Moser will have luncheon and attend a fashion show with a party of friends at The Montclair Inn on Saturday.

Mr. and Mrs. W. I. Suydam of Wilber street were weekend guests of Mr. and Mrs. John Van Zulen of Brooklyn.

Mr. and Mrs. Edward Zbrowski of Jorammon street entertained friends from Newark Tuesday evening.

Mr. and Mrs. David Sundheimer and daughter, Miss Helena Sundheimer of Ralph street with John J. Glancy of Newark spent Sunday in Trenton.

Mr. and Mrs. Walter P. Weiss and daughter, Marie, of Ralph street spent Sunday visiting in Denver.

Mr. and Mrs. Francis Lukowiak and children of Ralph street visited Sunday in Trenton.

Miss Dorothy Mithon of Tappan avenue, a senior at Newark State Teachers College, will entertain over the weekend for Miss Joan Gelling of Fords, and Miss Dorothy Gurka of Port Reading, classmates. Miss Mithon and her guests will be among those at a party to be given Saturday evening by Miss Elevera Lugano of Jannarone street, who is also a senior at Newark Teachers.

The Monday afternoon Sewing club will hold a rummage sale, Friday and Saturday, May 17 and 18 at 142 Washington avenue. Mrs. May McAllister is chairman of the event.

Mr. and Mrs. William Paecht will entertain Saturday in honor of their daughter, Audrey Helen's, sixth birthday. Guests will be from the neighborhood and include her sisters Elaine and Barbara and Mr. Paecht, Betty and Richard Parker, Arline and Richard Zipf, Dorothy Huff, Carol Lee, Mary Duckton, Barbara Ann and Joan O'Connor, Patricia Papera, Joel Raymond, Richard Roth, Marilyn Capi and Betty Fulton.

Miss Wilma Friesinger of Over-

SEE THIS SMART NEW CHARIS WITH CONCEALED LACERS



A sensational, new Charis foundation, providing the personal 'lacing control' decreed by current fashion—but with all lacing features entirely concealed! Exclusive with Charis. See it today. Phone or write.

MRS. F. C. MAC CARRICK 33 DOW STREET BE. 2-3543-J. Belleville, N. J.

look avenue was one of a party attending a dinner-shower for Miss Gertrude Wisler of Elizabeth at the Blue Mirror, Newark supper club, last Friday night.

Chester Kraft of Ralph street is on a business trip to Canada.

Take Music Exam

Virginia Young, Mary Lou Hayden, Virginia Strauss, Kora Zadian and Lorraine Stratton, pupils of the Stratton Studio of Music, took theory examinations conducted by the New York Music Education League at Steinway Hall, Saturday.

Woman's Club To Hold Final Business Meeting Monday

The final business meeting of

the year will be held at the Woman's Club on Monday. The board of trustees will meet at 11:30 a.m. The Board of Directors at 12:30 and the business meeting at 2 p.m.

"I LOST MY BULGES AND FOUND A SLIM WAIST!"

A Spencer, designed especially for you, will smooth away every bulge, give you graceful carriage—and better health.

MRS. IRENE S. CULLEN

70 Tiona Ave., Belleville, N. J.

Tele. After 9 a.m. and before 6 p.m. Belleville 2-1948

Tele. Before 9 a.m. and After 6 p.m. Belleville 2-1759-J.

Registered Spencer Corsetiere

OWNED AND OPERATED BY WILKINSON, GADDIS & CO.—A NEW JERSEY INSTITUTION SINCE 1864

MUTUAL Self-Service Food Stores

Guaranteed MEAT is a Real TREAT!

LEGS of LAMB 21c lb.

Genuine Spring

ONE PRICE ONLY!

Choice Grade RIB ROAST BEST CUTS 23c lb.

Choice Grade CHUCK ROAST 16c lb.

FRESH CAUGHT MACKEREL BOSTON 7c lb. FRESH BUCK SHAD 7c lb.

PRODUCE DEPT.

Fresh Tender STRING BEANS 5c lb.

U. S. No. 1 New POTATOES 6 lbs. for 19c

Large Fancy RHUBARB LOCAL GROWN 3 buns. 10c

Armour's CORNED BEEF 12-oz. can 15c

Green Giant PEAS. 2 17-oz. cans 25c

WINDEX 2 small bottles 29c 1 lb. bot. 31c

CHILI CON CARNE 10-oz. can 10c

DEVILED HAM MORRELL'S 3-oz. can 10c

Corned Beef HASH Broad-2 1-lb. cans 29c

Statler TOWELS 2 rolls 15c

Dole PINEAPPLE JUICE 10-oz. pkgs. 2 9c

Hartley JAM BLACK CURRANT jar 27c

Procter & Gamble Products

CRISCO SHORTENING 1-lb. can 17c 3-lb. can 47c

CAMAY SOAP The Soap of Beautiful Women cake 5c

P & G WHITE NAPHTHA SOAP 8 cakes 25c

SELOX The Speed Soap 2 1-lb. pkgs. 21c

OXYDOL Granulated Soap 2 1-lb. pkgs. 35c

PURE GRAPE JELLY 16-oz. jar 10c N. B. C. GRAHAMS 1-lb. pkg. 15c

DAIRY DEPT.

FINE TABLE BUTTER CUT FROM TUB 1 lb. 29c

Our Very Best Creamery Tub BUTTER 1 lb. 31c

The Finest Butter Money can Buy! U.S. Government Inspected 93 Score

Ideal Roll 1 lb. 32c BUTTER Ideal Print 1 lb. 33c

494 Union Ave., Belleville

PRICES EFFECTIVE THURS., FRI. AND SAT., MAY 9th, 10th and 11th ONLY



## Visit The Scout Camporee

The three branches of Scouting — the Boy Scouts, the Sea Scouts and the Cubs — will hold their annual camporee tomorrow, Saturday and Sunday at Clearman Field. Belleville youth will be marshalled together in a local demonstration of the value and accomplishments of a great national youth movement. How different from that which is taking place in many countries.

The results of this event are two-fold. Hundreds of youngsters receive the thrill of camping under the sky. They get a big kick out of it because it is something that they are seldom able to do in this day unless they are fortunate enough to be able to spend some time during the summer at a regular camp. The camporee also affords the Scout organization the opportunity to demonstrate to the people of Belleville its

## Difficult To Understand

There are many things in this world of ours which we are unable to understand. The brutal, cold-blooded murder of Frank Frederick is one of them. A hard-working business man, father of eight children and well-liked in his community, he paid a heavy penalty for the folly and lawlessness of others. Strange patterns are often woven into our lives and this is one of them. The passing of Frank Frederick from the Washington avenue scene removes one who appeared to be willing to accept little in return for the pleasure he received from living.

The only consolation will be in the apprehension of those who are guilty of the crime. May they suffer many times more than Mr. Frederick did in the hours between the time that he stopped the gun-

## Reaction To Turn In Events

It has been interesting to watch general reaction, in this section at least, to the published reports that Great Britain has suffered a rather serious setback in its efforts to oust the German forces from Norway. Some folks have been following the European war daily but as a general rule most grew tired of pouring through communiqué-like stories which conveyed little or nothing in the matter of real information. Interest has surged within the last week with events pointing to an Allied backstep in the Norwegian encounters. The admissions of Prime Minister Neville Chamberlain in the British Commons the other day made it all the more convincing.

The question that is again being asked is where this country stands in the present line-up with Herr Hitler in virtual control of the Norse country and just a hop, skip and a jump from English soil. Through propaganda and other motives the pressure is being put on this country more each day. The inability of the Allied powers to pre-

## Open For Another Season

The New York World's Fair will begin its second season with the usual opening day ballyhoo and celebration on Saturday. The make-up of the Fair has changed somewhat since it closed its doors last October. The international section in particular has witnessed quite a face-lifting during the intervening months. Last year one of the first sights that caught the visitor's eye, regardless of the point of vantage in the grounds, was the towering building of Sotheby's Russia with its bronze-colored statue of a Russian workman perched atop its spire. It will be missing this year. One of the smaller nations, principally through the change in the war picture during the winter months, have withdrawn their exhibitions.

The Fair in turn is concentrating more this year on presenting the beauties and advantages of the countries to the south of us — Central and South America. The

## Seeing New Jersey First

The "Travel America" campaign which is now being carried on so extensively by tourist bureaus, hotel agencies, state and regional publicity councils and other, could easily be reduced to a "Travel Jersey" campaign now that spring has really blossomed forth. There is much for the motorist and his family to see without leaving the borders of New Jersey. Already the many shore spots are being filled with weekend and Sunday visitors. Aside from the popularity of these areas for many, we think a "plug" should be put in for this state's park system. Although not as extensive or as elaborate as some, it has many natural attri-

value as a community enterprise.

Those who attend the camporee will have their eyes opened by the demonstrations and exhibitions which may be seen there. They will learn that Scouting is more than just a convenient means for the young boys to spend a night out to play hare and hounds or to learn how to do "a good deed every day." The Boy Scout movement is one of the few that answers the problem of what to do with young boys. Trained leaders and experts are put at the disposal of the youngsters who join. They learn how to use their heads and their hands. What more could be asked?

Scouting contributes an important recreational value to the town. Show your appreciation and interest in it some time during the next three days for a visit at Clearman Field.

jittery assassin's bullet and when he died. In such a time it is difficult to console a family which has suddenly had taken from it one who was loved and needed. The sympathy of the entire town is with Mrs. Frederick and her children. There is little that any of us can do to help, but we should all try to respond to any way in which we may be of assistance in helping to ease the suffering and the loss of this family.

In the few short days since the crime, the Knights of Columbus have stepped forward and offered to sponsor a dance at the Elks Club. The entire proceeds would be turned over to the Frederick family. A number of firms, organizations and individuals have offered their wholehearted cooperation. Your assistance will be greatly appreciated and is solicited. May we urge you to purchase tickets for the dance?

vent Hitler from entering Norway or to chase him out is looked upon as a general weakness of their forces principally through unpreparedness.

One conflict does not decide a war. Perhaps this is the best way to view the events in Norway. The Allies did not win all the battles in the last war. Hitler's superior air power greatly aided him in his seizure of control in Norway. British sea power was put into action too late to be very effective in halting the German advance.

The Allies have undoubtedly learned a valuable lesson regarding the value of air fighters as employed by the Nazis. During the coming months they should not be lacking in increasing the size of their air forces. By combining these with their naval power, fears of continued German progress in the war should be allayed.

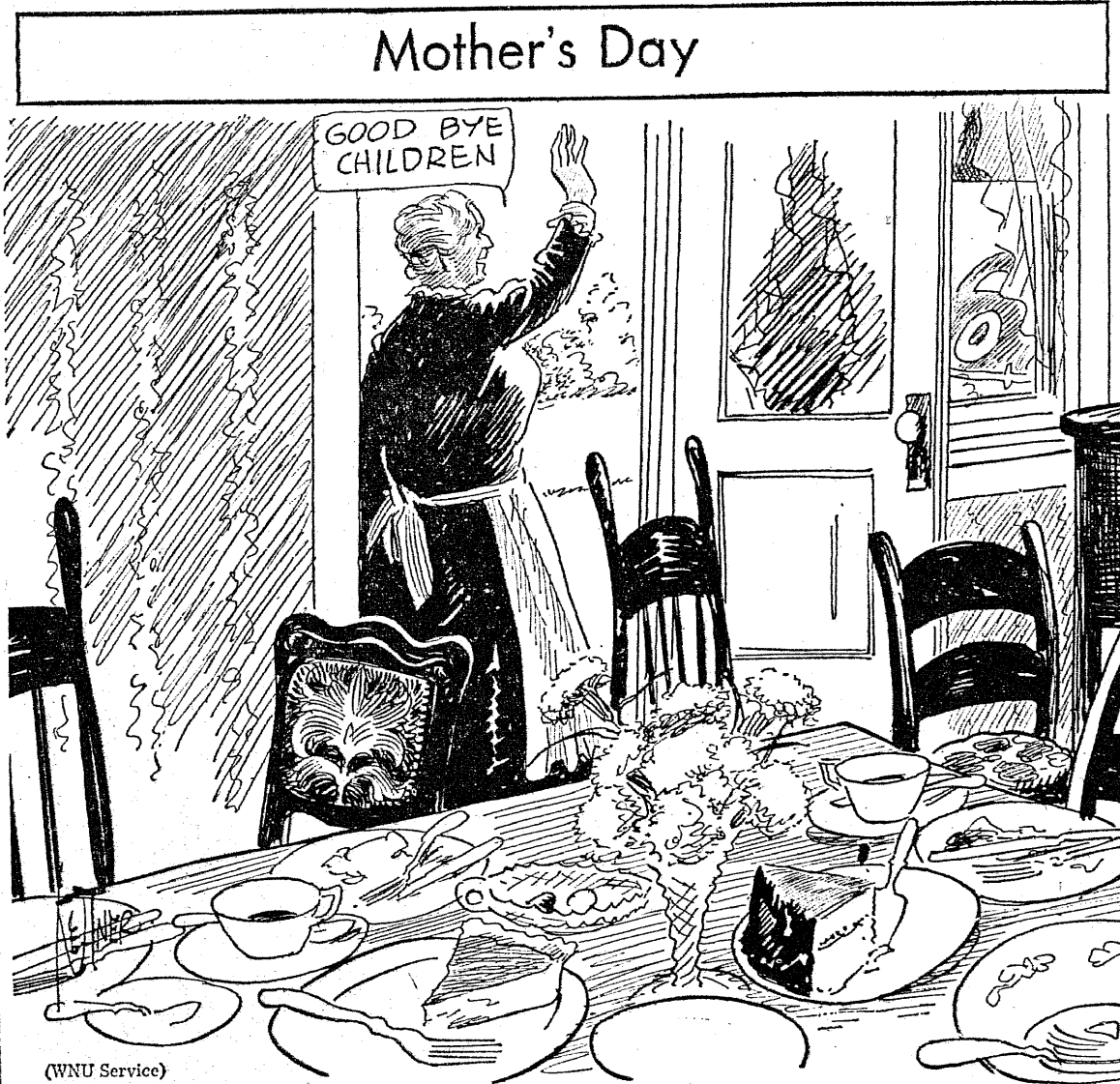
Those who would like to frighten this country into the war will find stiff opposition to any such plan. The attitude of average folks is that we should go the limit in preparedness for defense, but that is all.

preliminary Fair calendar shows it filled with events designed to promote good will and a better understanding between the Americas.

Some who made the Fair their second home last year are wondering what there will be left for them to see this summer. If the advance publicity on the Flushing exposition can be accepted as fact, there will be many changes which will greet the public when the big show opens on Saturday. For many of us there must be places which we did not visit last season — either because of the lack of time or the fact that the crowds around them kept us away. The Fair officials predict that they will draw larger crowds than they did in 1939. But, wisely they are not estimating the crowd turnouts in the million figures that they did a year ago. This was one thing which helped to keep away many who might otherwise have attended.

butes which make it most enticing to those who enjoy shaking off the urban localities for a day or so. Palisades Interstate Park, High Point, Jockey Hollow, Hacklebarney State Park, Stokes Forest and others offer the visitor much. New Jersey is abundant in the number of lake areas and other country spots. If it is historical lore in which one is interested, there is much to be seen.

This is not a publicity release from the New Jersey Council, the state's advertising agency. We do have the belief, however, that taking a tip from the slogan of "See America First," we should make an effort to "See New Jersey First."



## THIS BUSINESS OF GOVERNMENT

by Samuel S. Kenworthy

Executive Sec'y N. J. State League of Municipalities

## Replacement Taxes

The New Jersey State Chamber of Commerce in a report entitled "Do New Taxes Relieve the Tax Burden on Real Estate?" issued in March of last year attempted to prove by means of figures that replacement taxes do not relieve general property. The study embraced the following states: California, Colorado, Illinois, Iowa, Kansas, Michigan, New York, Ohio and Pennsylvania. Unfortunately the Chamber failed to present sufficiently complete or sufficiently accurate figures to make its proof valid. Accidentally, or otherwise, figures were presented which on the surface indicated the conclusions to be



sounded. In summarizing the report the Chamber is quoted as follows: "Property Taxes reduced for a year or two invariably resumed once more their upward trend and gradually approached or exceeded the former peak levies." The report also referred to the owners of property as being more heavily taxed now than ever before. How glaringly inaccurate are these statements is evidenced by the following:

In the case of California the report states, "In 1938 the total property levy amounted to \$320,000,000 — just \$1,000,000 more than the peak levy in 1932." As a matter of fact, 1932 was not the peak year. The levy on general property in 1930 amounted to \$343,000,000 while in 1938 it amounted to \$289,000,000 or \$54,000,000 less than the \$1,000,000 additional which the Chamber chose to present.

## Overlooked Some Facts In Study

In connection with Pennsylvania the report referred to a tax base broadening program in 1935 and pointed to estimated property taxes in 1938 amounting to \$815,000,000 as against \$312,375,982 in 1934. The report, however, overlooked the fact that the first replacement revenues came from a Sales Tax in 1933 and that general property taxes in the prior year, 1932, amounted to \$363,000,000 or \$48,000,000 more than in 1938.

The report admitted to reductions during a replacement tax period in Ohio from \$170,302,000 in 1934 to \$164,575,000 in 1937 and in Illinois from a figure of \$333,000,000 in 1932 to \$328,000,000 in 1938.

With data for Colorado not available complete figures for the other eight states covering the period 1930 through 1938 show a situation entirely different from that which was pictured in the study of the State Chamber. In every state property tax levies were substantially higher in 1930 than in 1938. In this overall picture the slight rise in property tax levies from the depths of the depression is not only insignificant

but also misleading. The proof of the property tax relief is the large drop in property tax levies since 1930; a slight rise from the low point should be expected with improvement in economic conditions.

## Dropped Appreciably During Depression

An additional proof of property tax relief, if any is needed, is the trend of total taxes. Total taxes dropped appreciably during the depression, but in five of the eight states they had reached new high levels in 1938 and in the remaining three states the 1938 level approached that of 1930. If property tax levies fell off while total taxes increased, the only source of this new revenue must be replacement taxes, which means either taxes never levied before or higher rates on these taxes.

That this situation holds good in states other than those studied by the State Chamber is evidenced by the following general property levies, which incidentally, include four of the states used in the Chamber's study:

| STATE         | 1930          | 1938          |
|---------------|---------------|---------------|
| Indiana       | \$144,000,000 | \$101,000,000 |
| Michigan      | 281,000,000   | 175,000,000   |
| West Virginia | 54,000,000    | 27,000,000    |
| Pennsylvania  | 378,000,000   | 315,000,000   |
| Iowa          | 110,000,000   | 94,000,000    |
| California    | 343,000,000   | 289,000,000   |

Compare the general property levies in these states with the following three which have not adopted replacement taxes and you will find that in these three states property levies occupied approximately the same level in 1930 as they did in 1938 while the total tax burden advanced:

| STATE         | 1930          | 1938          |
|---------------|---------------|---------------|
| New Jersey*   | \$271,000,000 | \$268,000,000 |
| Massachusetts | 216,000,000   | 230,000,000   |
| Virginia†     | 37,000,000    | 31,000,000    |

\* 1939 \$270,000,000.

† Reduction of property tax due to assumption by the state of 37,000 miles of county roads.

The only similarity between these nine states lies in the trend of the total tax burden, which has generally risen over the years. This increase in New Jersey and Massachusetts has been derived in large part from the general property tax while replacement taxes have supplied the bulk of the revenue in the other states. Far more significant is the trend of the general property levies in the first six states referred to. These states set out to relieve the burden on general property by adopting replacement taxes. The figures indicate how successful they have been. Furthermore, an examination of the ratables of these nine states shows that there has been the same proportionate drop in all of them over the nine-year period.

that he had spread the story that candidate Mathes had been forced to resign from his private employment because of political activities in town.

Commissioner Waters and Mayor Kenworthy challenged in speeches and by letters the political power of former Mayor De Graw, who was backing an anti-administration ticket.

Assemblyman Homer Zink issued statement endorsing Mayor Kenworthy and Commissioners Carragher, Clark and Waters for re-election.

## Fifteen Years Ago

The Board of Education decided to reconsider its opposition to resumption of German classes at the high school. German was abandoned during the World War.

Joseph R. Murphy succeeded Christian W. Hanselman as superintendent of the post office.

Mayor DeGraw, Commissioners Neary, Dettelbach and Vermuele voted for an ordinance to acquire additional ground at the rear of Town Hall. Commissioner Carragher opposed the purchase.

## Twenty Years Ago

Andrew L. Boylan was elected president of the local chapter of the Red Cross.

The Class of '20 of the high school went on a trip to Washington. They were

## Yesteryear.....

## One Year Ago

Belleville Merchants' Association opposed Clark-Williams plan for Washington avenue parking meters, discussed splitting rent on town-owned property to be used as parking lots.

George Taylor, former member of Board of Education, died at seventy-four.

Three-day Scout camporee held at Clearman Field.

Herb Beams and Andy Phillips copied the prize money in the News bowling sweepstakes.

Bellboys split with Clifton and Hillside.

Albert Henry, Jr. of 213 Garden avenue won the town marble championship.

## Five Years Ago

Town ordinance to license and regulate junkyards held invalid by Supreme Court in suit brought by Giuseppe Resciniti of Clinton street.

Board of Commissioners authorized \$2,500,000 bond issue, largest in Belleville history, to refinance town's debt.

Harry Estelle, new president of the Belleville Tennis Club, announced formation of junior division of the club.

## Ten Years Ago

Commissioner Clark denied

## Mother's Day

## MUSICAL SILHOUETTES

A Musical Commentary by Leon Carson

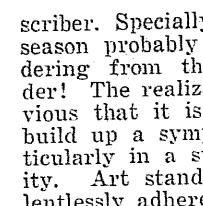
CCCCXXVII

"The symphony orchestra is the greatest, the most expressive and the most powerful of musical instruments; it is one instrument: always one voice." —Charles O'Connell

## Symphonic Reflection:

Now that the current local Symphonic season has come to a close, reflections on the parts of those vitally interested in Nutley music could well be in order.

It is undoubtedly the general consensus of opinion that the trend of the season thus far closed has been a successful one: therefore we will limit our comments to but a single "reflection." At this point we digress a bit to state that while the author of this column is naturally more interested in the vocal than in any other branch of the Art, he is also deeply sympathetic with any consistent musical effort made in Nutley, — either vocal or instrumental. Therefore, these recordings must be construed in a sincerely impersonal light, as coming from an interested but sometimes puzzled citizen and Symphonic subscriber. Specially, we refer to the second Symphonic concert of the season probably popularly called a "success." After deliberate pondering from the standpoint of symphonic progress, — we won-



der! The realization must be obvious that it is no easy task to build up a symphonic body, particularly in a suburban community. Art standards must be relentlessly adhered to, and yet income must be derived through public support. We know that at the inception of the Nutley Symphony Society the primary objective was to establish here a highly efficient instrumental (only) unit which would in due course reflect great civic pride. In order to accomplish this it would seem sensible to assume that all efforts should be directed only toward the refining of the organization's playing ability and the widening of its scope of repertoire. This is impossible when even once in each season a large part of the energy and thought required for rehearsals is diverted to training a large choral group which in turn is to collaborate with the instrumental ensemble in presenting of the symphonic concert. The unusual amount of time and effort expended of time and effort expended by a heterogeneous group of singers to a substantial point for public hearing, should be spent on the routine training of the orchestra, regardless of how high a degree of efficiency it has already attained.

We know of no symphony orchestra, large or small, which, through the years, has built itself up to the heights of definite stabilization, wherein the policy has been to diviate from the strictly symphonic field and enter into a joint venture with a choral body. Tradition has it that the symphonic phase must always dominate, with any vocal assistance decidedly secondary, even when noted vocalists are involved or the Ninth Symphony is being rendered. A chorus has no claim to joint importance with the instruments. If the Nutley Society wishes assurance of a permanent place as a symphonic body it cannot make of itself an exception to this well-tried procedure.

In setting down these remarks we are not unmindful of the earnest co-operation of our local singers who generously gave of their talent to the program in question: it is not a matter of individuals, but of policy. When one thinks of formal symphonic concert he somehow contemplates an evening of dignified atmosphere and calm environment, free from the distractions, informality and confusion of seating and unseating a large choral unit on the stage.

If the directors of the Nutley Symphony Society feel that in order to maintain attendance and increase revenue, it is necessary to create a choral appurtenance to the instrumental body, then the Society ceases to be what it originally purported to be, — a true symphonic organization. Perhaps the name should then be changed to something like the "Nutley Symphony and Choral Society." To us this would mean encroaching upon the field of a well-established and routine choral body which, during the sixteen years of its existence, has never ceased to adhere in a conservative manner to its original purpose. We refer to the Woman's Choral of Nutley.

True friends (and there are many in Nutley) can be won for the Symphony only by the latter giving to the public straight symphonic and chamber-music concerts, with plenty of traditional repertoire and occasional contemporary works of merit, even though for a few more years progress is slow and the burden heavy. Let us, then, have less unnecessary popular catering to the public and a stronger manifestation of a well-defined, unswerving determination to serve Nutley music lovers throughout each season strictly along pure symphonic lines — free from all experimental distractions. This, in itself, is a large order.

evening, and a successful year, for the Society has certainly established itself as a superior organization which does worthwhile things.

## Attend Congress

New Jersey music teachers attending the Teachers' Congress of New York at Steinway Hall last Thursday morning were Lester Major of Arlington, Amy G. Stratton, Eleanor Bacon-Peck and Adele Sutherland of Belleville. The most inspiring address of the meeting was given by Miss Kate Chittenden, eighty year old music teacher, who is still active and enthusiastic in her profession. One of the outstanding teachers in the country, she has been working hard since 1874 and had much to contribute in her talk out of the riches of her experience.

## Appreciate Noll's Thoughts

From Joseph Filler, Secretary, Belleville Mfr. Softball League,

To the Editor of The News:

The Belleville Manufacturers Softball League wish you to know that the sentiments of Commissioner Noll concerning Clearman Field are greatly appreciated.

This League in past years has had great success at Clearman Field when their games were scheduled at this field. This year, however, when word reached us of closing Clearman Field we were lost as to where we might play our games.

We have written Commissioner Noll that this League will help him in any way he deems necessary to keep Clearman Field open for the summer months.

## Rabbi Favors New P.O.

From Rabbi Rubin R. Dobin, Congregation A. A. A., 317 Washington Avenue

To the Editor of The News

I am following, with the greatest of interest, the campaign started by The News, to secure a new Post Office building for our town. For many years I have expressed the need for such a new building, due to the progress which Belleville has been making and is making in attracting new industries and new people to our community.

I am certain that Congressman Hendon, who can do a great deal for us in the matter, will give us his complete support. May I wish you the best of luck in your campaign, and I assure you that you can count on me for any help that I may be able to give.

## The Belleville News

In Consolidation with The Belleville Times, Established 1909

Entered as Second Class Mail Matter, at Newark, N. J., Post Office, Under Act of March 3, 1879, on October 9, 1925.

Published Every Thursday by The Belleville News Corporation, Belleville, N. J., Russell D. Day, President and Publisher.

National Advertising Representatives American Press Association 225 West 39th Street, New York, N. Y. Tel. Penn. 6-6325

Communications are desirable, but unless signed, will not be used. All reading matter should reach the office before Tuesday night. Display advertising cannot be taken after Tuesday, 5 P.M. Classified ads must be in by Wednesday noon.

Advertising, News and Business Office 228 Washington Avenue Telephone Belleville 2-2747

ADVERTISING RATES UPON APPLICATION

Subscription, \$2.00 Six Months, \$1.00



# Theatre Parties High Spots in Women's Social Whirl

A group of seven will go to New York to attend performance of "The Man who came to Dinner." Among them will be Mrs. Frank Kienle of Nutley, Mrs. Raymond Vosburgh, Mrs. Philip Riede, Mrs. Weldon Elroy, Mrs. Harold Ford, Mrs. Claude Fried and Mrs. N. C. H.

A group of eight held a dinner and theatre party Wednesday in New York. They attended performance of "DuBarry was Lady" and had dinner at the Hotel Taft. Among them were Mrs. Anne Taylor, Mrs. John Wron, Mrs. M. Birmingham and Mrs. William O'Connor of Nutley. Mrs. George Harrison, Mrs. Edward Soleau, Mrs. John Gibbs and Mrs. James Lynch.

## Guild Will Hold Luncheon At Montgomery Tuesday

The Women's Guild of Montgomery Presbyterian Church will hold the May luncheon for women interested in the Church Tuesday at 1 in the church. Mrs. John Opdyke will be the guest speaker. Her topic will be "The Migrant Work in New Jersey." Mrs. Raymond Williams of Westminster Presbyterian Church in Bloomfield and Mrs. O. Bell Close of Fewsmith Presbyterian Church will be guests.

## School No. 10 To Meet

The Parent-Teachers Association of School No. 10 will hold a regular meeting this afternoon at 3:30 in the school. The election of officers will take place. Miss Mabel Guile, superintendent of the State Board of Children's Guardians, will be the speaker. Plans will be completed for a games night which will be held some evening this month. Mrs. Raymond Connelly, president, will preside.

# Bridge Kept Clubs Busy

Mrs. and Mrs. Albert Borman of Mertzt avenue entertained Saturday evening at four tables of bridge. Guests were Mr. and Mrs. Schrop Van Orden of Nutley, and Mrs. Griffith Casler of Bloomfield, Mr. and Mrs. Frank Paul, Mr. and Mrs. William Paul, Mr. and Mrs. Ernest Hodgson, Mr. and Mrs. William Robinson, Mr. and Mrs. Carl Struble and Mr. and Mrs. Harold Kienle.

## Parents' Day At N. J. C. Will Attract Local People

Belleville residents whose daughters are students at New Jersey College for Women have been invited to visit the campus Saturday for the annual celebration of Parents' Day. A collegiate adaptation of Alice in Wonderland, in which the lobster quadrille will become a square dance and the Battle of Weddledum and Tweedledum a clash of rival campus political groups, will be presented in dance and pantomime by 200 students. About 3,000 parents and guests will be entertained at the Parents' Day festivities, which will also include riding, archery, fencing, swimming, a recital and teas. The program is presented by the Athletic Association, with Miss Margaret Reeve, 40, of Millburn as general chairman.

# Many Guests At Luncheons

Mrs. Louise H. Ballinger of Overlook avenue was hostess yesterday at luncheon to her group of the Women's Guild of Fewsmith Presbyterian Church. Present were Mrs. Harold Snook, Mrs. Richard Schlichting, Mrs. J. A. Dunn, Mrs. Lydia Fox, Mrs. Gertrude Brown, Mrs. Frank Stinson, Mrs. Alvin Bruegman, Mrs. Marion Frazier, Mrs. Matthew Atkinson and Mrs. L. P. Baurhenn.

Mrs. Ernest Potter, Mrs. Margaret Norris, Mrs. Frank Cure and Mrs. Horace Winship were luncheon bridge guests Tuesday of Mrs. Arthur Waller of Glen Ridge.

Mrs. John Daly of Union avenue was hostess yesterday at luncheon in honor of her mother, Mrs. Bertha Becker of Newark. Guests were Mrs. Gus Heier of Irvington and Mrs. Kenneth Wands.

# LEGION TO SELL POPPIES MAY 25

Auxiliary President Makes Appeal For Drive; Mrs. Arthur Christie Is Chairman

Poppy Day will be observed in town May 25, the Saturday before Memorial Day, Mrs. Adele Hoffman, president of Belleville Unit No. 105 of the American Legion Auxiliary, announced today. The little red memorial flowers will be distributed here by women and girls of the Belleville Unit, under the direction of Mrs. Arthur Christie, chairman of the Poppy Day committee.

"We feel that Poppy Day will have increased meaning to America this year," Mrs. Hoffman said, "because renewed warfare in Europe has renewed the memory of those boys of ours who gave their lives 'over there' twenty-two years ago. It is for them that we put on the poppy each year, to show that we still remember and honor their sacrifices. It is the flower which grew where they fell and which now blooms on the coats of Americans who appreciate their service."

## Dr. Ernest C. Reock Will Head Convention Delegation

Asbury Park, May 4 — A large delegation of Essex County Dental Society members are participating in the seventieth annual session of the New Jersey State Dental Society which opened its three-day convention at the Berkeley-Carter Hotel in Asbury Park yesterday.

The delegation is headed by Dr. Ernest C. Reock of 367 Washington avenue, president; Leonard Gray, president-elect; C. J. Schweikhardt, vice-president. The officers and members of the local society will hear the latest developments of their profession at the convention.

## Penny Supper Saturday Night

The Goodwill Chapter of the World Wide Guild will hold their second annual penny supper Saturday evening at 5:30 in the Grace Baptist Church. A special meeting of the committee planning it was held at the home of Miss Edna Hogan of 600 Washington avenue last night.

Miss Lucy Alden of Prospect street entertained Monday evening for the Scandalettes. Present were the Misses Tina Berliss, Connie Hamilton, Frances Gorin, Frances Haworth, Virginia Gowie and Clair Drexler. The club has been admitted to the National Federation of Sub Debs Clubs.

# Billy Travers Celebrated Birthday with Party

Mr. and Mrs. William Travers of Williams street entertained Saturday afternoon in honor of the ninth birthday of their son, Billy. Guests were Shirley, Eleanor, Stephen and William Muzio of Newark, Howard Foster of Nutley, Patricia Howley, Marjorie Dillon, Anne Durkin, Thomas and James Mundy, Michael Flynn, Joseph Byrne, Edmund Shae, Louis Carlano and Raymond Martin. Decorations were carried out in a Mexican color scheme.

Mr. and Mrs. Peter V. Goldschmitt of Overlook avenue have as their guest, Mr. Goldschmitt's mother, Mrs. Peter C. Goldschmitt of Milwaukee, Wis.

Mr. and Mrs. H. F. Ross and twins, Hope and Harold, of Perry street were guests Sunday of Mr. and Mrs. Arnold Wetter of Jersey City.

Mrs. James Wood of Lincoln terrace was hostess Monday afternoon to her group of Avenue Chapter of the Order of the Eastern Star. Twenty were present. The plans for the coming year were discussed.

## Cubs Will Have Active Part In Scout Camporee

Cub Scout Pack 350, Fewsmith Presbyterian Church has an active part in the Boy Scout Camporee to be held tomorrow, Saturday and Sunday morning at Clearman Field. A four-Cub relay race between members of this pack and Pack 96 of Hillside will be held at 1:30 Saturday. The Cubs will also re-enact Robinson Crusoe on an island, erecting his hut. Bob's good man Friday, the parrot and the goat will all be there.

At their pack meeting Thursday night, Cubs of Den 1 gave two skits. One showed Cubs answering an ad for a lion tamer. The other skit dealt with a newspaper reporter at work receiving news from Cubs. Those participating were Billy Young, Luther Van Pelt, Robert Davis, Robert Stewart, George Stewart, Robert Abel, Nicholas Hagood and Douglas Weir. Richard Orr led Den No. 4 in singing two Cub songs to close the program.

Three new Cubs added to the pack are Fred Sohne, Joseph Cardora and Teddy Klemens. The Cubs will hold a card party Wednesday, May 22, at Fewsmith Church.

## Sing Sing Assistant Chaplain Speaker For Men's Club

A. Stanley Shepard, assistant chaplain of Sing Sing prison, will be the guest speaker when the Men's Club of Wesley Methodist Church holds its annual banquet in the church hall May 27. He has chosen as the subject of his address "Is a Criminal Worth Saving?"

The club will gather at the church at 7:30 Monday evening and will visit the Bloomfield establishment of Gorny & Gorny, funeral directors.

## Dr. N. T. Lambert Surgeon Chiroprodist

Now Located At  
517 Franklin Avenue  
Opposite Franklin Theatre  
Telephone Nutley 2-4112  
HOURS: DAILY 9 a.m.—9 p.m.  
Wednesday, 9 a.m.—5 p.m.

Excavating Roads, Grading, Sewers, Water Lines, Trucking and Tractor Work, Top Soil For Sale. Cellar Excavating.

58 HANCOX AVENUE NUTLEY, N. J.

Mrs. Peter Johnson, Mrs. A. E. Ross, Mrs. Edward Demarest, Mrs. Charles Demarest, Mrs. Agnes Heath, Mrs. William Carey, Mrs. A. Gross, Mrs. Fred Harris, Mrs. George Johnson, Mrs. George Newman and Mrs. Charles Harvey attended the executive board meeting of the Women's Guild of Montgomery Presbyterian Church Tuesday at the home of Mrs. Cornelius Corvill of Bloomfield.

## Men's Club To Hear Indian

The Men's Club of Fewsmith Presbyterian Church will have as speaker at their meeting Tuesday night "Running Deer," a full-blooded Mohawk Indian, who will tell of Indian life and customs on his home reservation and demonstrate some of their Indian dances. He will also lecture on safety.

He was born and brought up on the St. Regis Indian Reservation on the St. Lawrence River in northern New York State on the United States side of the Canadian border. He has worked his way through grammar school and up to the third year in Syracuse University.

# Belleville Youth In College

HANOVER, N. H., May 7 — William V. Palmer, son of Belleville Superintendent of Schools and Mrs. Wayne R. Palmer of 20 Tiona avenue, was one of the six New Jersey boys who were among the thirty-nine sophomores to win coveted memberships in Green Key, Dartmouth College honorary junior society, when the results of the annual election were announced last week.

ITHACA, N. Y., May 8 — William V. Van Horn, son of Mr. and Mrs. Theodore H. Van Horn of 364 Little street, will hold the position of waiter captain during the fifteenth annual Hotel Ezra Cornell this Friday. He, together with the entire student body of the School of Hotel Administration of Cornell University, will aid in the operation of the "world's only hotel-for-a-day," which is financed, managed and operated from bellhop to manager by students. Several hundred guests from all over the country will attend.

# JEWISH APPEAL DRIVE OPENS

Campaign Rally Tonight At Synagogue For United Drive For Funds

Solicitation of Belleville Jewry for the United Jewish Appeal of Essex County begins tomorrow following a campaign rally at Congregation A.A.A., under the chairmanship of John J. Berliss. Principal speaker tonight is Dr. Baruch Branstern, world traveler and author, giving an eye-witness account of conditions among European Jewry. A sound film "Humanity Calls," is to be shown, telling of the work of the United Jewish Appeal in providing relief, rehabilitation and resettlement for the refugees and needy Jews of Europe, Palestine and other countries and in supporting local and national civic, protective, cultural, educational and health agencies.

Assisting Mr. Berliss are Barnett Yudin, treasurer, and the following associate chairmen: Edward J. Abramson, Abram Atkins, and Rabbi Rubin R. Dobin. Mrs. Sol Weinglass is women's chairman. The local executive committee includes:

Edward J. Ackerman, Morris Benowitz, Samuel Faer, Harry G. Fellman, Jack Faust, Irving H. Garson, Morris M. Gottschall, Louis Haft, Dr. William Halpern, Dr. Benjamin A. Jacobson, Martin Kabot, Dr. George Kaden, Herman W. Kesner, Samuel J. Kogan, Nathan N. Paul, Dr. William Rich, Dr. Morris Rochlin, Dr. Barney Schaffer, Michael S. Smith, Jack Steinhauer, Murray Steinhauer, Louis Sussman, Herman B. Wische, Dr. William Taffet.

## Two Former H. S. Athletes Hurt In Car Crack-up

Two former high school athletes were slightly injured when the car in which they were riding crashed into another at the intersection of Belleville and Franklin avenues Saturday night. They are Lester Dunham, twenty, of 130 Mt. Prospect avenue, former star pitcher for the Blue and Gold, and Chester J. Kuchinski, nineteen, of 79 Glass street, who was a star footballer.

Dunham was driving the car south in Franklin avenue and, attempting to make a left turn into Belleville avenue, collided with the station wagon driven by Abe L. Krohm, thirty-nine, of Bloomfield. The youths were taken to

St. Mary's Hospital in the town ambulance. Five stitches were taken in the little finger of Kuchinski's left hand and he was also treated for a cut on the head. Dunham escaped with a cut hand.

## Youth Committee Will Sponsor Sports Dance At Church

A sports dance, sponsored by Fewsmith All-Youth, will be held in the recreation room of Fewsmith Presbyterian Church tomorrow night at 8. The proceeds will be used to sponsor a Fewsmith team in the proposed Church Softball League. Twenty-two from Fewsmith Boys' Club have already enrolled, from which a first and second team will be picked. Registration for the teens is still open. Besides paying the entry fee, the All-Youth group will place the remaining dance profit toward the purchase of team jerseys.

Dance chairmen are Russell Walker and Bert Rowland, Jr. Harold Fairweather and John Walter will assist in arrangements. Mr. and Mrs. Albert Knowles and Mr. and Mrs. Nova Babb will chaperon. Music will be by popular recordings.

## Newark Youth Seriously Hurt When Motorcycle Crashes

Charles Rossi, twenty-four, of 54 Davenport avenue, Newark, was critically injured shortly before 7 Saturday night when the motorcycle which he was driving crashed into the fender of the car operated by Oscar Rosenberg, thirty-four, of 113 Willowside avenue, Montclair. The accident occurred in Franklin street between Lake street and the Erie Railroad tracks, Silver Lake.

Rosenberg told police that Rossi pulled out of line to pass a car and ran into the fender of Rosenberg's car. Rossi was thrown to the pavement. He was taken to Columbus Hospital by Rocco Yannuzzi of Newark. Rossi suffered a fractured skull, fractures of both legs, fractured pelvis and internal injuries.

**HEADLIGHTS**

**FOCUSED & ADJUSTED**

**50¢**

**BRAKES - STEERING**

Adjusted by Specialists

EASY PAY PLAN

**DRIVE YOUR CAR IN NOW!**

**SYSTEM**

**BRAKE SERVICE INC.**

OLDEST & LARGEST SAFETY SPECIALISTS IN N. J.

402 Broadway (Opp. Cemetery) Newark, N. J. Telephone 2-2822

615 BLOOMFIELD AVENUE (Opp. Royal Theatre) Bloomfield, N. J. Bldg 2-2567

**What!! Housework Dangerous!**

Yes; highly hazardous! A scalding burn, a quick misstep, blind grasp of a poison bottle. These account for an almost incredible number of accidents and fatalities. Have you first aid remedies at hand? Know how to use them? Is your physician's phone number where you can find it instantly? If you cannot reach him immediately, call us; we will gladly aid you in locating him.

**Abbott's Cut Rate Drug Store**

A. A. FLORENTINE, PH.G.

531 Washington Ave. Phone Belleville 2-3646

Where Quality and Accuracy Prevail

**"Here's Your 'Phone, Sonny"**



**"Gee, that's swell! How soon can we use it?"**

**"All depends...but when I get the job done, your folks will be able to talk to anyone—anywhere—any time—as easy as you can say 'Jack Robinson.'"**

Installing a telephone is a special job requiring neat, skilful workmanship. No two installations are alike.

Each must be tailor-made, and so well done that it will do its part day after day in the organization of workers, wires and equipment that makes your telephone service fast, accurate, dependable...and low in cost. Talk 18 miles for 15c...30 for 25c, any time within New Jersey.

**S. ROSE**

Excavating Roads, Grading, Sewers, Water Lines, Trucking and Tractor Work, Top Soil For Sale. Cellar Excavating.

58 HANCOX AVENUE NUTLEY, N. J.

**Dr. N. T. Lambert Surgeon Chiroprodist**

Now Located At  
517 Franklin Avenue  
Opposite Franklin Theatre  
Telephone Nutley 2-4112  
HOURS: DAILY 9 a.m.—9 p.m.  
Wednesday, 9 a.m.—5 p.m.

**Dr. Ernest C. Reock Will Head Convention Delegation**

Asbury Park, May 4 — A large delegation of Essex County Dental Society members are participating in the seventieth annual session of the New Jersey State Dental Society which opened its three-day convention at the Berkeley-Carter Hotel in Asbury Park yesterday.

The delegation is headed by Dr. Ernest C. Reock of 367 Washington avenue, president; Leonard Gray, president-elect; C. J. Schweikhardt, vice-president. The officers and members of the local society will hear the latest developments of their profession at the convention.

**Penny Supper Saturday Night**

The Goodwill Chapter of the World Wide Guild will hold their second annual penny supper Saturday evening at 5:30 in the Grace Baptist Church. A special meeting of the committee planning it was held at the home of Miss Edna Hogan of 600 Washington avenue last night.

Miss Lucy Alden of Prospect street entertained Monday evening for the Scandalettes. Present were the Misses Tina Berliss, Connie Hamilton, Frances Gorin, Frances Haworth, Virginia Gowie and Clair Drexler. The club has been admitted to the National Federation of Sub Debs Clubs.

**Sing Sing Assistant Chaplain Speaker For Men's Club**

A. Stanley Shepard, assistant chaplain of Sing Sing prison, will be the guest speaker when the Men's Club of Wesley Methodist Church holds its annual banquet in the church hall May 27. He has chosen as the subject of his address "Is a Criminal Worth Saving?"

The club will gather at the church at 7:30 Monday evening and will visit the Bloomfield establishment of Gorny & Gorny, funeral directors.

**Dr. N. T. Lambert Surgeon Chiroprodist**

Now Located At  
517 Franklin Avenue  
Opposite Franklin Theatre  
Telephone Nutley 2-4112  
HOURS: DAILY 9 a.m.—9 p.m.  
Wednesday, 9 a.m.—5 p.m.

**S. ROSE**

Excavating Roads, Grading, Sewers, Water Lines, Trucking and Tractor Work, Top Soil For Sale. Cellar Excavating.

58 HANCOX AVENUE NUTLEY, N. J.

**Dr. Ernest C. Reock Will Head Convention Delegation**

Asbury Park, May 4 — A large delegation of Essex County Dental Society members are participating in the seventieth annual session of the New Jersey State Dental Society which opened its three-day convention at the Berkeley-Carter Hotel in Asbury Park yesterday.

The delegation is headed by Dr. Ernest C. Reock of 367 Washington avenue, president; Leonard Gray, president-elect; C. J. Schweikhardt, vice-president. The officers and members of the local society will hear the latest developments of their profession at the convention.

**Penny Supper Saturday Night**

The Goodwill Chapter of the World Wide Guild will hold their second annual penny supper Saturday evening at 5:30 in the Grace Baptist Church. A special meeting of the committee planning it was held at the home of Miss Edna Hogan of 600 Washington avenue last night.

Miss Lucy Alden of Prospect street entertained Monday evening for the Scandalettes. Present were the Misses Tina Berliss, Connie Hamilton, Frances Gorin, Frances Haworth, Virginia Gowie and Clair Drexler. The club has been admitted to the National Federation of Sub Debs Clubs.

**Sing Sing Assistant Chaplain Speaker For Men's Club**

A. Stanley Shepard, assistant chaplain of Sing Sing prison, will be the guest speaker when the Men's Club of Wesley Methodist Church holds its annual banquet in the church hall May 27. He has chosen as the subject of his address "Is a Criminal Worth Saving?"

The club will gather at the church at 7:30 Monday evening and will visit the Bloomfield establishment of Gorny & Gorny, funeral directors.

**Dr. N. T. Lambert Surgeon Chiroprodist**

Now Located At  
517 Franklin Avenue  
Opposite Franklin Theatre  
Telephone Nutley 2-4112  
HOURS: DAILY 9 a.m.—9 p.m.  
Wednesday, 9 a.m.—5 p.m.

**S. ROSE**

Excavating Roads, Grading, Sewers, Water Lines, Trucking and Tractor Work, Top Soil For Sale. Cellar Excavating.

58 HANCOX AVENUE NUTLEY, N. J.

**Dr. Ernest C. Reock Will Head Convention Delegation**

Asbury Park, May 4 — A large delegation of Essex County Dental Society members are participating in the seventieth annual session of the New Jersey State Dental Society which opened its three-day convention at the Berkeley-Carter Hotel in Asbury Park yesterday.

The delegation is headed by Dr. Ernest C. Reock of 367 Washington avenue, president; Leonard Gray, president-elect; C. J. Schweikhardt, vice-president. The officers and members of the local society will hear the latest developments of their profession at the convention.

**Penny Supper Saturday Night**

The Goodwill Chapter of the World Wide Guild will hold their second annual penny supper Saturday evening at 5:30 in the Grace Baptist Church. A special meeting of the committee planning it was held at the home of Miss Edna Hogan of 600 Washington avenue last night.

Miss Lucy Alden of Prospect street entertained Monday evening for the Scandalettes. Present were the Misses Tina Berliss, Connie Hamilton, Frances Gorin, Frances Haworth, Virginia Gowie and Clair Drexler. The club has been admitted to the National Federation of Sub Debs Clubs.

**Sing Sing Assistant Chaplain Speaker For Men's Club**

A. Stanley Shepard, assistant chaplain of Sing Sing prison, will be the guest speaker when the Men's Club of Wesley Methodist Church holds its annual banquet in the church hall May 27. He has chosen as the subject of his address "Is a Criminal Worth Saving?"

The club will gather at the church at 7:30 Monday evening and will visit the Bloomfield establishment of Gorny & Gorny, funeral directors.

**Dr. N. T. Lambert Surgeon Chiroprodist**

Now Located At  
517 Franklin Avenue  
Opposite Franklin Theatre  
Telephone Nutley 2-4112  
HOURS: DAILY 9 a.m.—9 p.m.  
Wednesday, 9 a.m.—5 p.m.

**S. ROSE**

Excavating Roads, Grading, Sewers, Water Lines, Trucking and Tractor Work, Top Soil For Sale. Cellar Excavating.

58 HANCOX AVENUE NUTLEY, N. J.

**Dr. Ernest C. Reock Will Head Convention Delegation**

Asbury Park, May 4 — A large delegation of Essex County Dental Society members are participating in the seventieth annual session of the New Jersey State Dental Society which opened its three-day convention at the Berkeley-Carter Hotel in Asbury Park yesterday.

The delegation is headed by Dr. Ernest C. Reock of 367 Washington avenue, president; Leonard Gray, president-elect; C. J. Schweikhardt, vice-president. The officers and members of the local society will hear the latest developments of their profession at the convention.

**Penny Supper Saturday Night**

The Goodwill Chapter of the World Wide Guild will hold their second annual penny supper Saturday evening at 5:30 in the Grace Baptist Church. A special meeting of the committee planning it was held at the home of Miss Edna Hogan of 600 Washington avenue last night.

Miss Lucy Alden of Prospect street entertained Monday evening for the Scandalettes. Present were the Misses Tina Berliss, Connie Hamilton, Frances Gorin, Frances Haworth, Virginia Gowie and Clair Drexler. The club has been admitted to the National Federation of Sub Debs Clubs.

**Sing Sing Assistant Chaplain Speaker For Men's Club**

A. Stanley Shepard, assistant chaplain of Sing Sing prison, will be the guest speaker when the Men's Club of Wesley Methodist Church holds its annual banquet in the church hall May 27. He has chosen as the subject of his address "Is a Criminal Worth Saving?"

The club will gather at the church at 7:30 Monday evening and will visit the Bloomfield establishment of Gorny & Gorny, funeral directors.

**Dr. N. T. Lambert Surgeon Chiroprodist**

Now Located At  
517 Franklin Avenue  
Opposite Franklin Theatre  
Telephone Nutley 2-4112  
HOURS: DAILY 9 a.m.—9 p.m.  
Wednesday, 9 a.m.—5 p.m.

**S. ROSE**

Excavating Roads, Grading, Sewers, Water Lines, Trucking and Tractor Work, Top Soil For Sale. Cellar Excavating.

58 HANCOX AVENUE NUTLEY, N. J.

**Dr. Ernest C. Reock Will Head Convention Delegation**

Asbury Park, May 4 — A large delegation of Essex County Dental Society members are participating in the seventieth annual session of the New Jersey State Dental Society which opened its three-day convention at the Berkeley-Carter Hotel in Asbury Park yesterday.

The delegation is headed by Dr. Ernest C. Reock of 367 Washington avenue, president; Leonard Gray, president-elect; C. J. Schweikhardt, vice-president. The officers and members of the local society will hear the latest developments of their profession at the convention.

**Penny Supper Saturday Night**

The Goodwill Chapter of the World Wide Guild will hold their second annual penny supper Saturday evening at 5:30 in the Grace Baptist Church. A special meeting of the committee planning it was held at the home of Miss Edna Hogan of 600 Washington avenue last night.

Miss Lucy Alden of Prospect street entertained Monday evening for the Scandalettes. Present were the Misses Tina Berliss, Connie Hamilton, Frances Gorin, Frances Haworth, Virginia Gowie and Clair Drexler. The club has been admitted to the National Federation of Sub Debs Clubs.

**Sing Sing Assistant Chaplain Speaker For Men's Club**

A. Stanley Shepard, assistant chaplain of Sing Sing prison, will be the guest speaker when the Men's Club of Wesley Methodist Church holds its annual banquet in the church hall May 27. He has chosen as the subject of his address "Is a Criminal Worth Saving?"

The club will gather at the church at 7:30 Monday evening and will visit the Bloomfield establishment of Gorny & Gorny, funeral directors.

**Dr. N. T. Lambert Surgeon Chiroprodist**

Now Located At  
517 Franklin Avenue  
Opposite Franklin Theatre  
Telephone Nutley 2-4112  
HOURS: DAILY 9 a.m.—9 p.m.  
Wednesday, 9 a.m.—5 p.m.

**S. ROSE**

Excavating Roads, Grading, Sewers, Water Lines, Trucking and Tractor Work, Top Soil For Sale. Cellar Excavating.

58 HANCOX AVENUE NUTLEY, N. J.

**Dr. Ernest C. Reock Will Head Convention Delegation**

Asbury Park, May 4 — A large delegation of Essex County Dental Society members are participating in the seventieth annual session of the New Jersey State Dental Society which opened its three-day convention at the Berkeley-Carter Hotel in Asbury Park yesterday.

The delegation is headed by Dr. Ernest C. Reock of 367 Washington avenue, president; Leonard Gray, president-elect; C. J. Schweikhardt, vice-president. The officers and members of the local society will hear the latest developments of their profession at the convention.

**Penny Supper Saturday Night**

The Goodwill Chapter of the World Wide Guild will hold their second annual penny supper Saturday evening at 5:30 in the Grace Baptist Church. A special meeting of the committee planning it was held at the home of Miss Edna Hogan of 600 Washington avenue last night.

Miss Lucy Alden of Prospect street entertained Monday evening for the Scandalettes. Present were the Misses Tina Berliss, Connie Hamilton, Frances Gorin, Frances Haworth, Virginia Gowie and Clair Drexler. The club has been admitted to the National Federation of Sub Debs Clubs.

**Sing Sing Assistant Chaplain Speaker For Men's Club**

A. Stanley Shepard, assistant chaplain of Sing Sing prison, will be the guest speaker when the Men's Club of Wesley Methodist Church holds its annual banquet in the church hall May 27. He has chosen as the subject of his address "Is a Criminal Worth Saving?"

The club will gather at the church at 7:30 Monday evening and will visit the Bloomfield establishment of Gorny & Gorny, funeral directors.

**Dr. N. T. Lambert Surgeon Chiroprodist**

Now Located At  
517 Franklin Avenue  
Opposite Franklin Theatre  
Telephone Nutley 2-4112  
HOURS: DAILY 9 a.m.—9 p.m.  
Wednesday, 9 a.m.—5 p.m.

**S. ROSE**

Excavating Roads, Grading, Sewers, Water Lines, Trucking and Tractor Work, Top Soil For Sale. Cellar Excavating.

58 HANCOX AVENUE NUTLEY, N. J.

**Dr. Ernest C. Reock Will Head Convention Delegation**

Asbury Park, May 4 — A large delegation of Essex County Dental Society members are participating in the seventieth annual session of the New Jersey State Dental Society which opened its three-day convention at the Berkeley-Carter Hotel in Asbury Park yesterday.

The delegation is headed by Dr. Ernest C. Reock of 367 Washington avenue, president; Leonard Gray, president-elect; C. J. Schweikhardt, vice-president. The officers and members of the local society will hear the latest developments of their profession at the convention.

**Penny Supper Saturday Night**

The Goodwill Chapter of the World Wide Guild will hold their second annual penny supper Saturday evening at 5:30 in the Grace Baptist Church. A special meeting of the committee planning it was held at the home of Miss Edna Hogan of 600 Washington avenue last night.

Miss Lucy Alden of Prospect street entertained Monday evening for the Scandalettes. Present were the Misses Tina Berliss, Connie Hamilton, Frances Gorin, Frances Haworth, Virginia Gowie and Clair Drexler. The club has been admitted to the National Federation of Sub Debs Clubs.

**Sing Sing Assistant Chaplain Speaker For Men's Club**

A. Stanley Shepard, assistant chaplain of Sing Sing prison, will be the guest speaker when the Men's Club of Wesley Methodist Church holds its annual banquet in the church hall May 27. He has chosen as the subject of his address "Is a Criminal Worth Saving?"

The club will gather at the church at 7:30 Monday evening and will visit the Bloomfield establishment of Gorny & Gorny, funeral directors.

**Dr. N. T. Lambert Surgeon Chiroprodist**

Now Located At  
517 Franklin Avenue  
Opposite Franklin Theatre  
Telephone Nutley 2-4112  
HOURS: DAILY 9 a.m.—9 p.m.  
Wednesday, 9 a.m.—5 p.m.

**S. ROSE**

Excavating Roads, Grading, Sewers, Water Lines, Trucking and Tractor Work, Top Soil For Sale. Cellar Excavating.

58 HANCOX AVENUE NUTLEY, N. J.

**Dr. Ernest C. Reock Will Head Convention Delegation**

Asbury Park, May 4 — A large delegation of Essex County Dental Society members are participating in the seventieth annual session of the New Jersey State Dental Society which opened its three-day convention at the Berkeley-Carter Hotel in Asbury Park yesterday.

The delegation is headed by Dr. Ernest C. Reock of 367 Washington avenue, president; Leonard Gray, president-elect; C. J. Schweikhardt, vice-president. The officers and members of the local society will hear the latest developments of their profession at the convention.

**Penny Supper Saturday Night**

The Goodwill Chapter of the World Wide Guild will hold their second annual penny supper Saturday evening at 5:30 in the Grace Baptist Church. A special meeting of the committee planning it was held at the home of Miss Edna Hogan of 600 Washington avenue last night.

Miss Lucy Alden of Prospect street entertained Monday evening for the Scandalettes. Present were the Misses Tina Berliss, Connie Hamilton, Frances Gorin, Frances Haworth, Virginia Gowie and Clair Drexler. The club has been admitted to the National Federation of Sub Debs Clubs.

**Sing Sing Assistant Chaplain Speaker For Men's Club**

A. Stanley Shepard, assistant chaplain of Sing Sing prison, will be the guest speaker when the Men's Club of Wesley Methodist Church holds its annual banquet in the church hall May 27. He has chosen as the subject of his address "Is a Criminal Worth Saving?"

The club will gather at the church at 7:30 Monday evening and will visit the Bloomfield establishment of Gorny & Gorny, funeral directors.

**Dr. N. T. Lambert Surgeon Chiroprodist**

Now Located At  
517 Franklin Avenue  
Opposite Franklin Theatre  
Telephone Nutley 2-4112  
HOURS: DAILY 9 a.m.—9 p.m.  
Wednesday, 9 a.m.—5 p.m.

**S. ROSE**

Excavating Roads, Grading, Sewers, Water Lines, Trucking and Tractor Work, Top Soil For Sale. Cellar Excavating.

58 HANCOX AVENUE NUTLEY, N. J.

**Dr. Ernest C. Reock Will Head Convention Delegation**

Asbury Park, May 4 — A large delegation of Essex County Dental Society members are participating in the seventieth annual session of the New Jersey State Dental Society which opened its three-day convention at the Berkeley-Carter Hotel in Asbury Park yesterday.

The delegation is headed by Dr. Ernest C. Reock of 367 Washington avenue, president; Leonard Gray, president-elect; C. J. Schweikhardt, vice-president. The officers and members of the local society will hear the latest developments of their profession at the convention.

**Penny Supper Saturday Night**

The Goodwill Chapter of the World Wide Guild will hold their second annual penny supper Saturday evening at 5:30 in the Grace Baptist Church. A special meeting of the committee planning it was held at the home of Miss Edna Hogan of 600 Washington avenue last night.

Miss Lucy Alden of Prospect street entertained Monday evening for the Scandalettes. Present were the Misses Tina Berliss, Connie Hamilton, Frances Gorin, Frances Haworth, Virginia Gowie and Clair Drexler. The club has been admitted to the National Federation of Sub Debs Clubs.

**Sing Sing Assistant Chaplain Speaker For Men's Club**

A. Stanley Shepard, assistant chaplain of Sing Sing prison, will be the guest speaker when the Men's Club of Wesley Methodist Church holds its annual banquet in the church hall May 27. He has chosen as the subject of his address "Is a Criminal Worth Saving?"

The club will gather at the church at 7:30 Monday evening and will visit the Bloomfield establishment of Gorny & Gorny, funeral directors.

**Dr. N. T. Lambert Surgeon Chiroprodist**

Now Located At  
517 Franklin Avenue  
Opposite Franklin Theatre  
Telephone Nutley 2-4112  
HOURS: DAILY 9 a.m.—9 p.m.  
Wednesday, 9 a.m.—5 p.m.

**S. ROSE**

Excavating Roads, Grading, Sewers, Water Lines, Trucking and Tractor Work, Top Soil For Sale. Cellar Excavating.

58 HANCOX AVENUE NUTLEY, N. J.

**Dr. Ernest C. Reock Will Head Convention Delegation**

Asbury Park, May 4 — A large delegation of Essex County Dental Society members are participating in the seventieth annual session of the New Jersey State Dental Society which opened its three-day convention at the Berkeley-Carter Hotel in Asbury Park yesterday.

The delegation is headed by Dr. Ernest C. Reock of 367 Washington avenue, president; Leonard Gray, president-elect; C. J. Schweikhardt, vice-president. The officers and members of the local society will hear the latest developments of their profession at the convention.

**Penny Supper Saturday Night**

The Goodwill Chapter of the World Wide Guild will hold their second annual penny supper Saturday evening at 5:30 in the Grace Baptist Church. A special meeting of the committee planning it was held at the home of Miss Edna Hogan of 600 Washington avenue last night.

Miss Lucy Alden of Prospect street entertained Monday evening for the Scandalettes. Present were the Misses Tina Berliss, Connie Hamilton, Frances Gorin, Frances Haworth, Virginia Gowie and Clair Drexler. The club has been admitted to the National Federation of Sub Debs Clubs.

**Sing Sing Assistant Chaplain Speaker For Men's Club**

A. Stanley Shepard, assistant chaplain of Sing Sing prison, will be the guest speaker when the Men's Club of Wesley Methodist Church holds its annual banquet in the church hall May 27. He has chosen as the subject of his address "Is a Criminal Worth Saving?"

The club will gather at the church at 7:30 Monday evening and will visit the Bloomfield establishment of Gorny & Gorny, funeral directors.

**Dr. N. T. Lambert Surgeon Chiroprodist**

Now Located At  
517 Franklin Avenue  
Opposite Franklin Theatre  
Telephone Nutley 2-4112  
HOURS: DAILY 9 a.m.—9 p.m.  
Wednesday, 9 a.m.—5 p.m.

**S. ROSE**

Excavating Roads, Grading, Sewers, Water Lines, Trucking and Tractor Work, Top Soil For Sale. Cellar Excavating.

58 HANCOX AVENUE NUTLEY, N. J.

**Dr. Ernest C. Reock Will Head Convention Delegation**

Asbury Park, May 4 — A large delegation of Essex County Dental Society members are participating in the seventieth annual session of the New Jersey State Dental Society which opened its three-day convention at the Berkeley-Carter Hotel in Asbury Park yesterday.

The delegation is headed by Dr. Ernest C. Reock of 367 Washington avenue, president; Leonard Gray, president-elect; C. J. Schweikhardt, vice-president. The officers and members of the local society will hear the latest developments of their profession at the convention.

**Penny Supper Saturday Night**

The Goodwill Chapter of the World Wide Guild will hold their second annual penny supper Saturday evening at 5:30 in the Grace Baptist Church. A special meeting of the committee planning it was held at the home of Miss Edna Hogan of 600 Washington avenue last night.

Miss Lucy Alden of Prospect street entertained Monday evening for the Scandalettes. Present were the Misses Tina Berliss, Connie Hamilton, Frances Gorin, Frances Haworth, Virginia Gowie and Clair Drexler. The club has been admitted to the National Federation of Sub Debs Clubs.

**Sing Sing Assistant Chaplain Speaker For Men's Club**

A. Stanley Shepard, assistant chaplain of Sing Sing prison, will be the guest speaker when the Men's Club of Wesley Methodist Church holds its annual banquet in the church hall May 27. He has chosen as the subject of his address "Is a Criminal Worth Saving?"

The club will gather at the church at 7:30 Monday evening and will visit the Bloomfield establishment of Gorny & Gorny, funeral directors.

**Dr. N. T. Lambert Surgeon Chiroprodist**

Now Located At  
517 Franklin Avenue  
Opposite Franklin Theatre  
Telephone Nutley 2-4112  
HOURS: DAILY 9 a.m.—9 p.m.  
Wednesday, 9 a.m.—5 p.m.

**S. ROSE**

Excavating Roads, Grading, Sewers, Water Lines, Trucking and Tractor Work, Top Soil For Sale. Cellar Excavating.

58 HANCOX AVENUE NUTLEY, N. J.

**Dr. Ernest C. Reock Will Head Convention Delegation**

Asbury Park, May 4 — A large delegation of Essex County Dental Society members are participating in the seventieth annual session of the New Jersey State Dental Society which opened its three-day convention at the Berkeley-Carter Hotel in Asbury Park yesterday.

The delegation is headed by Dr. Ernest C. Reock of 367 Washington avenue, president; Leonard Gray, president-elect; C. J. Schweikhardt, vice-president. The officers and members of the local society will hear the latest developments of their profession at the convention.

**Penny Supper Saturday Night**

The Goodwill Chapter of the World Wide Guild will hold their second annual penny supper Saturday evening at 5:30 in the Grace Baptist Church. A special meeting of the committee planning it was held at the home of Miss Edna Hogan of 600 Washington avenue last night.

Miss Lucy Alden of Prospect street entertained Monday evening for the Scandalettes. Present were the Misses Tina Berliss, Connie Hamilton, Frances Gorin, Frances Haworth, Virginia Gowie and Clair Drexler. The club has been admitted to the National Federation of Sub Debs Clubs.

**Sing Sing Assistant Chaplain Speaker For Men's Club**

A. Stanley Shepard, assistant chaplain of Sing Sing prison, will be the guest speaker when the Men's Club of Wesley Methodist Church holds its annual banquet in the church hall May 27. He has chosen as the subject of his address "Is a Criminal Worth Saving?"

The club will gather at the church at 7:3



